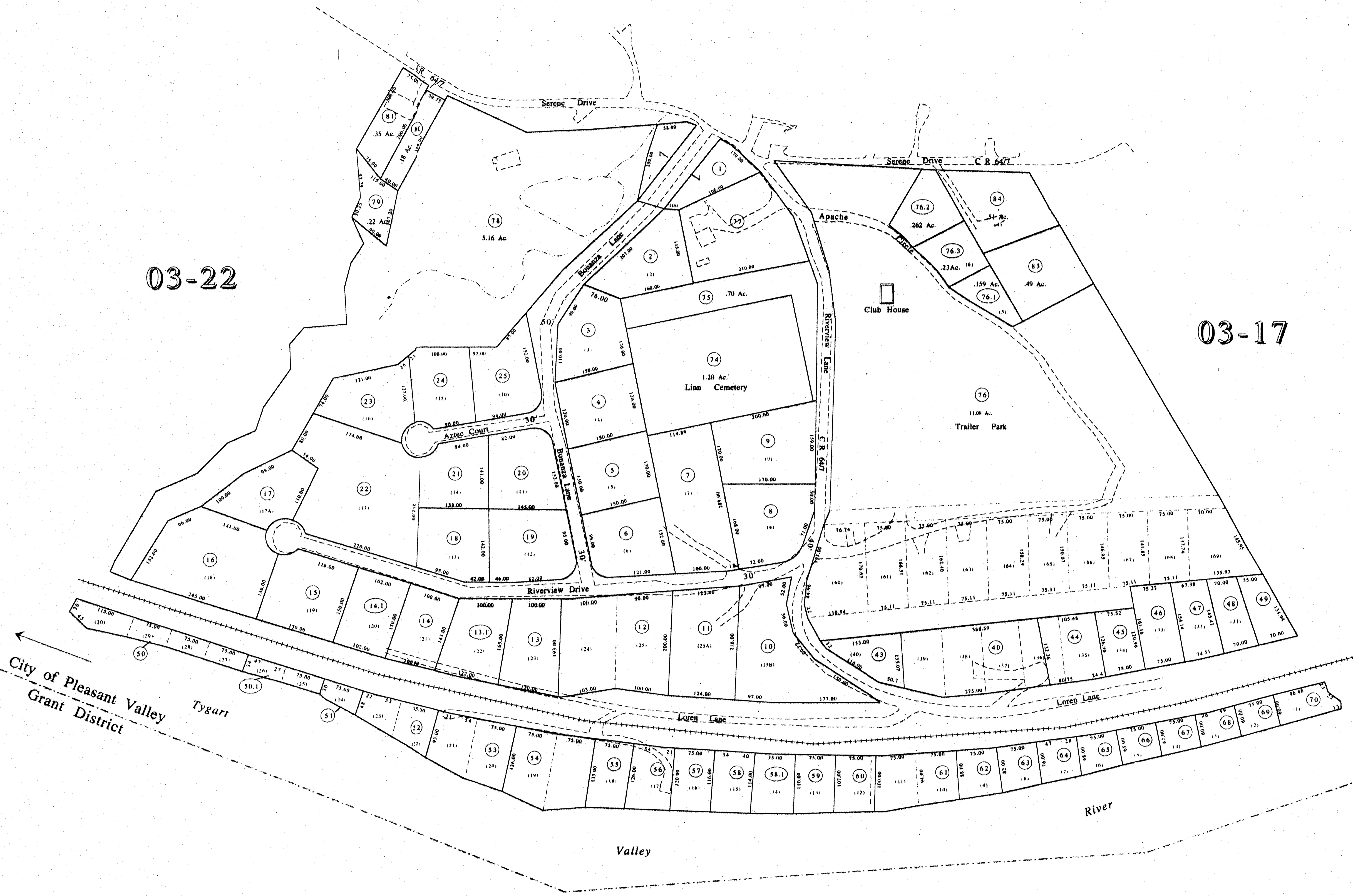
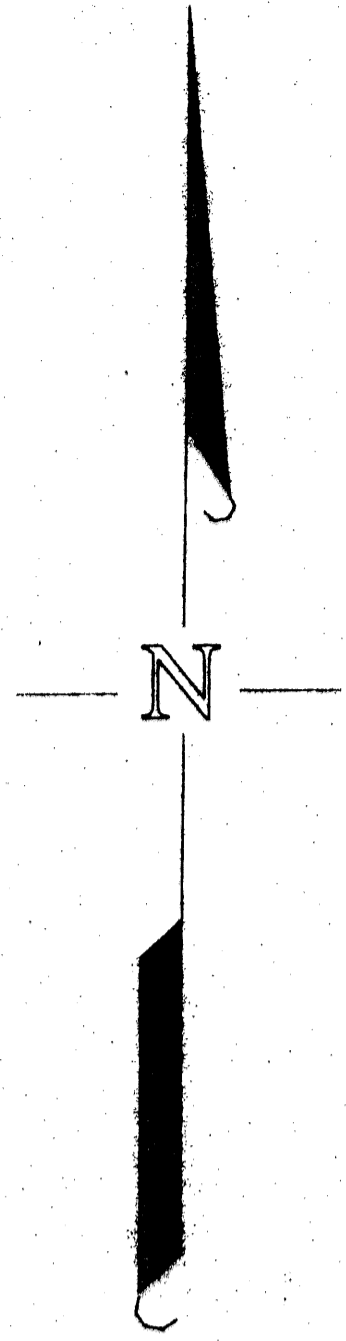


03-22

03-22

03-17



Mapscale: 1" = 100' (1:1200)

THIS DOCUMENT IS A TAX MAP. It was compiled for purposes of taxation from available record evidence and has not been field verified. It is not a valid survey plat. The existence of data on this map does not imply any "official" status to such data. The W.V. State Tax Dept. and the Marion County Assessor's Office assume no liability that might result from use of this document.

LEGEND	
Property Line	Original Lot Line
Edge of roadway	Lot Number
Corporation Line	Tax Parcel Number
Hydrography	Railroad

Office of the
Marion County Assessor
 James P. Priest, Assessor

Revision History	
Mepper	Date
1 NEW MAP NLK	September 1999
2 Revised MT	October, 2000
3	
4	
5	

All tax maps created under the provisions of reappraisal legislation are the property of the Marion County Reappraisal Program and the reproduction, copying, distribution or sale of such maps or any copies thereof without the written permission of the Marion County Assessor is prohibited by law.

City of Pleasant Valley
 03-17A