



03-25

03-24A

03-32

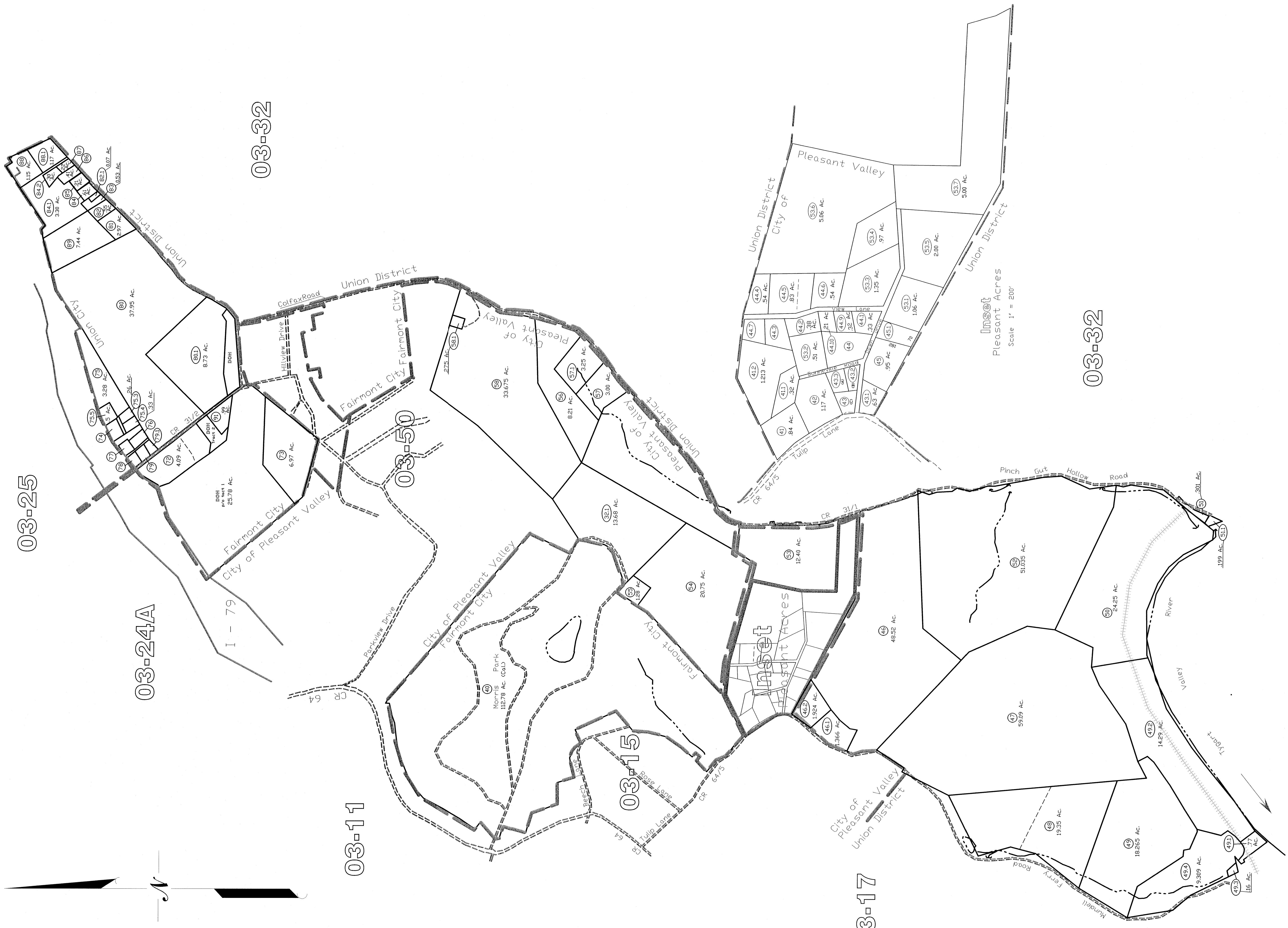
03-11

03-50

03-15

03-17

03-32



**Union District**  
03-24

All tax maps created under the provisions of reorganized legislation are the property of the Marion County Assessor's Office. The existence of state tax liens, and the Marion County Assessor's Office assume no liability that might result from use of this document.

**LEGEND**

Property Line	-----
Edge of roadway	-----
District Line	-----
Hydrography	-----
Original Lot Line	-----
Lot number	-----
Tax Parcel Number	-----
Railroad	-----

**Office of the**  
**Marion County Assessor**  
*James P. Pruesler, Assessor*

Revision	History	Date
1	NEW MAP	MARCH, 2002
2	NEW MAP	NOVEMBER, 2003
3	NEW MAP	JUNE, 2004
4	NEW MAP	SEPTEMBER, 2005

**Union District**  
03-24

