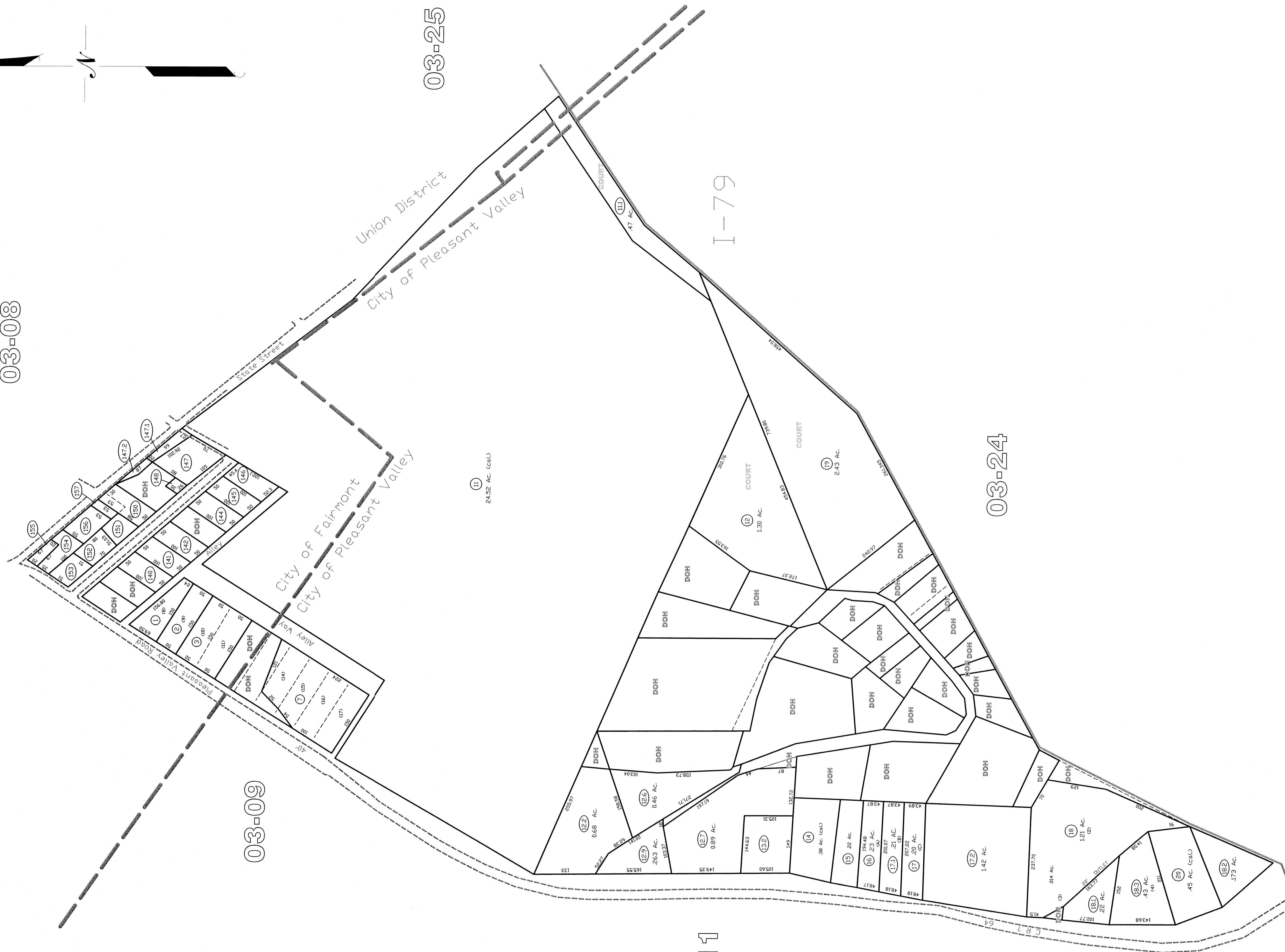


03-08



03-09

03-25

03-11

I-79

03-24

City of Pleasant Valley  
03-24A

THIS DOCUMENT IS A TAX MAP. It was compiled for purposes of taxation from survey plat. The existence of data on this map does not imply any official status to such data. The WV State Tax Dept. and the Marion County Assessor's Office assume no liability for any errors or omissions that may appear hereof without the written permission of the Marion County Assessor's Office. Prepared by: Date: 03-14

**LEGEND**

Property Line	---
Edge of roadway	----
District Line	- - - -
Hydrography	~~~~~
Original Lot Line	---
Lot number	10
Tax Parcel Number	17
Railroad	+++++

**Office of the  
Marion County Assessor**  
*James P. Prosser, Assessor*

REVISION	DATE	HISTORY
1	NEW MAP TN	MARCH, 2002
2	NEW MAP TN	NOVEMBER, 2003
3	NEW MAP TN	JULY, 2004
4	NEW MAP VMS	SEPTEMBER, 2005
5		

