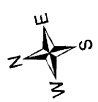
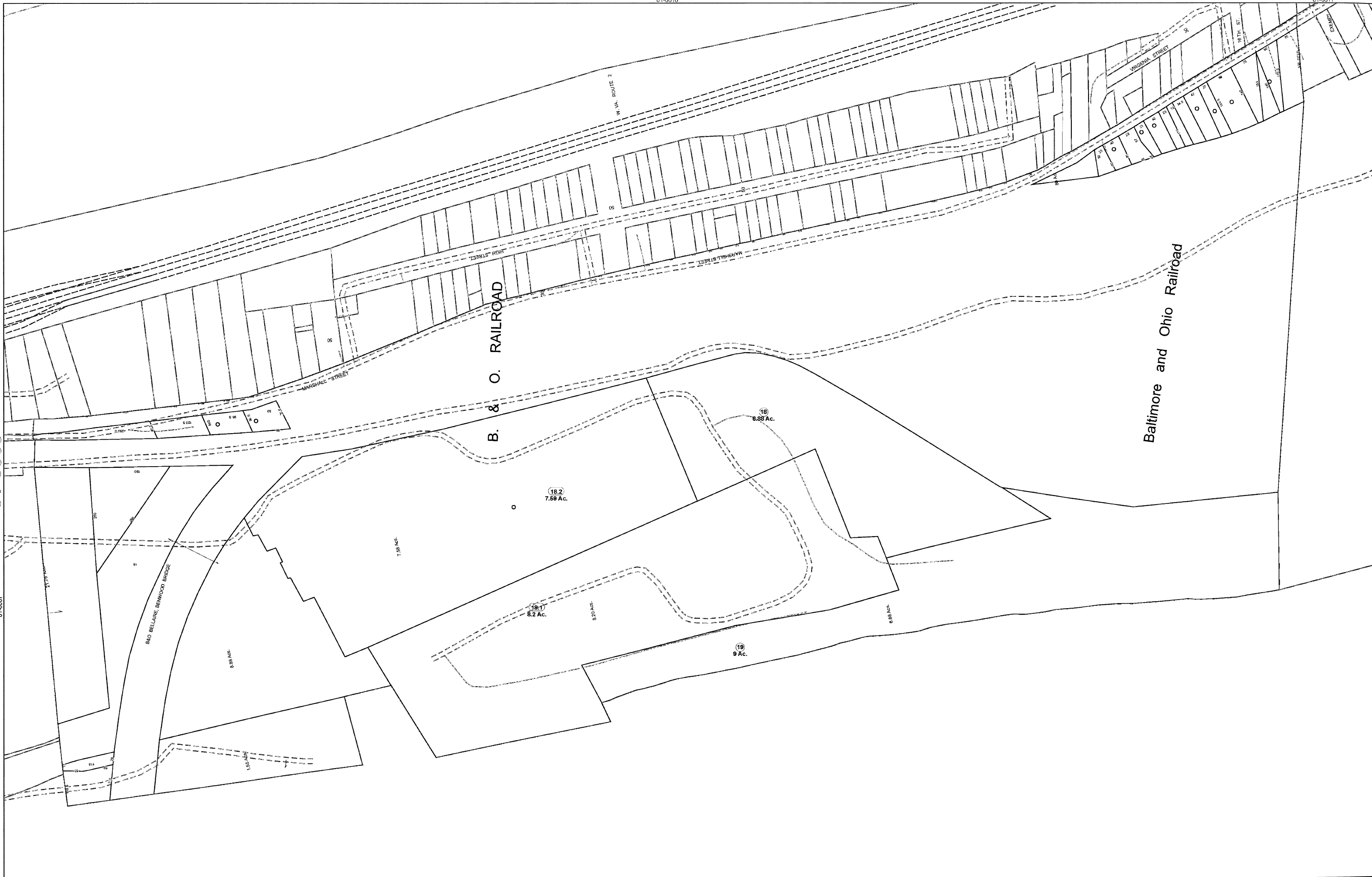


01-0009

01-0007

01-0012



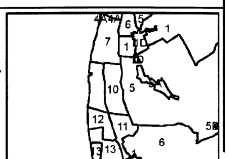
**FOR TAX PURPOSES ONLY**

Prepared By:  
**Chris Kessler**  
 Marshall County Assessor

Legend	
Property Line	—
Edge of pavement or roadway	- - - - -
Corporation line	· · · · ·
District line	- - - - -
County Line	- - - - -
Original Lot Line	— (15) —
Deed lot number (in parenthesis)	(15)
Parcel or index number	○
Improvement	○
Railroad	—+—+—+—+—
Visiter	—+—+—+—+—

Restriction	

All tax maps created under the provisions of reapportionment legislation are the property of the Assessor of Marshall County, West Virginia and the reproduction, copying, modification, distribution or sale of such tax maps or any copies thereof without the written permission of the Marshall County Assessor is prohibited by law.



**MARSHALL COUNTY - WEST VIRGINIA**  
 Office of Assessor

District: 01 Benwood Corp  
 Map No: 9  
 Date: Aug 24, 2009  
 Scale: 1 inch = 100 feet