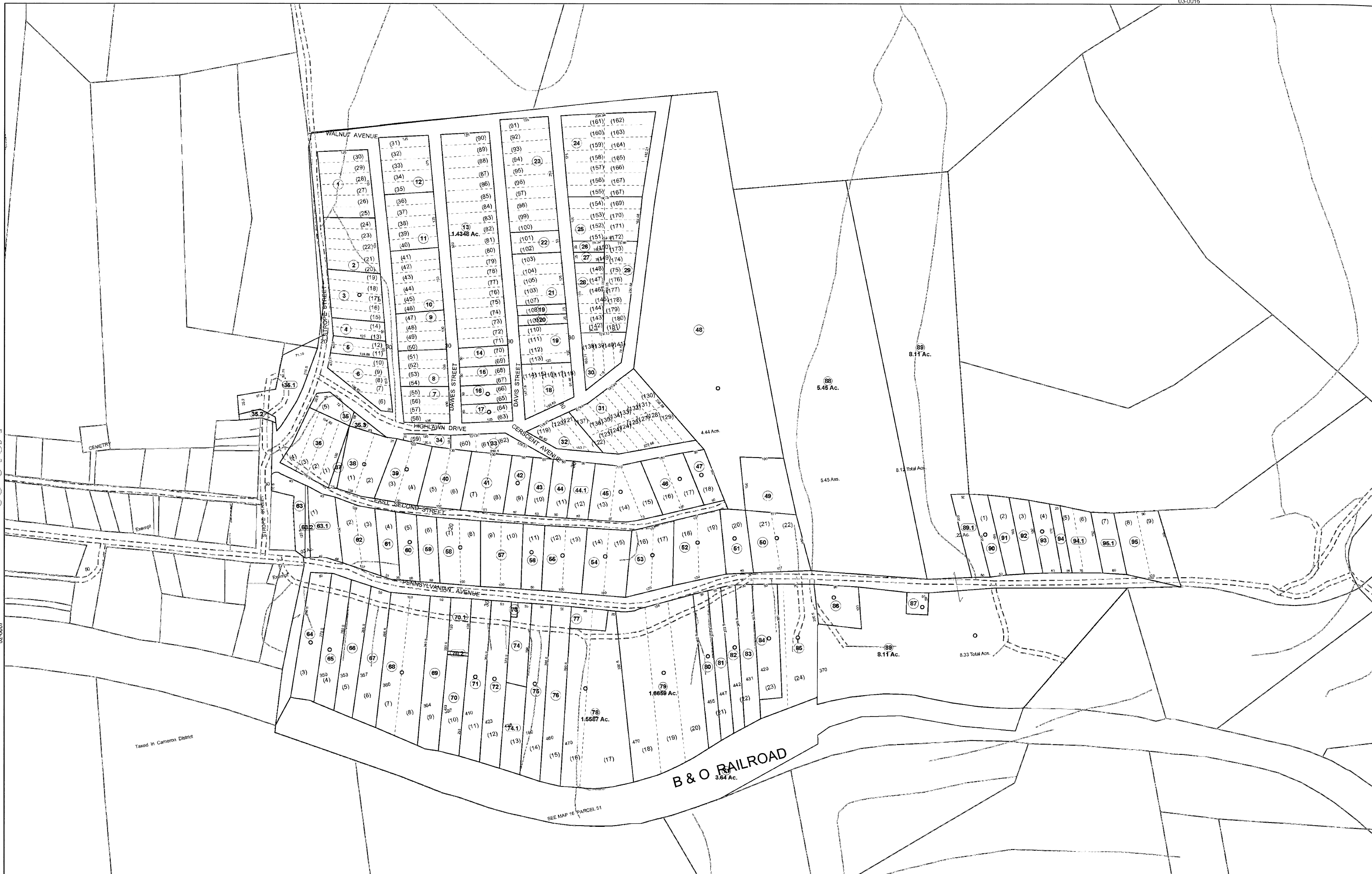


03-016A

02-0007



**FOR TAX PURPOSES ONLY**

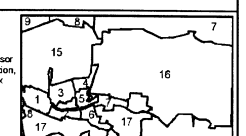
Prepared By:  
**Chris Kessler**  
 Marshall County Assessor

Legend		Restriction	
Property Line	—	Original Lot Line	(15)
Edge of pavement or roadway	- - - -	Deed lot number (in parenthesis)	(15)
Corporation line	— · — · —	Parcel or index number	○
District line	- - - -	Improvement	○
County Line	— · — · —	Railroad	—+—+—+—
		Water	— · — · —

03-0017

SEE MAP 16 PARCEL 51

All tax maps created under the provisions of regional legislation are the property of the Assessor of Marshall County, West Virginia and the reproduction, copying, modification, distribution or sale of such tax maps or any copies thereof without the written permission of the Marshall County Assessor is prohibited by law.



**MARSHALL COUNTY - WEST VIRGINIA**  
 Office of Assessor

District: 03 Cameron Dist  
 Map No: 16A  
 Date: Aug 24, 2009  
 Scale: 1 inch = 100 feet