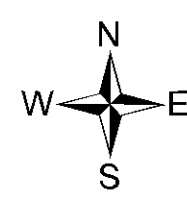
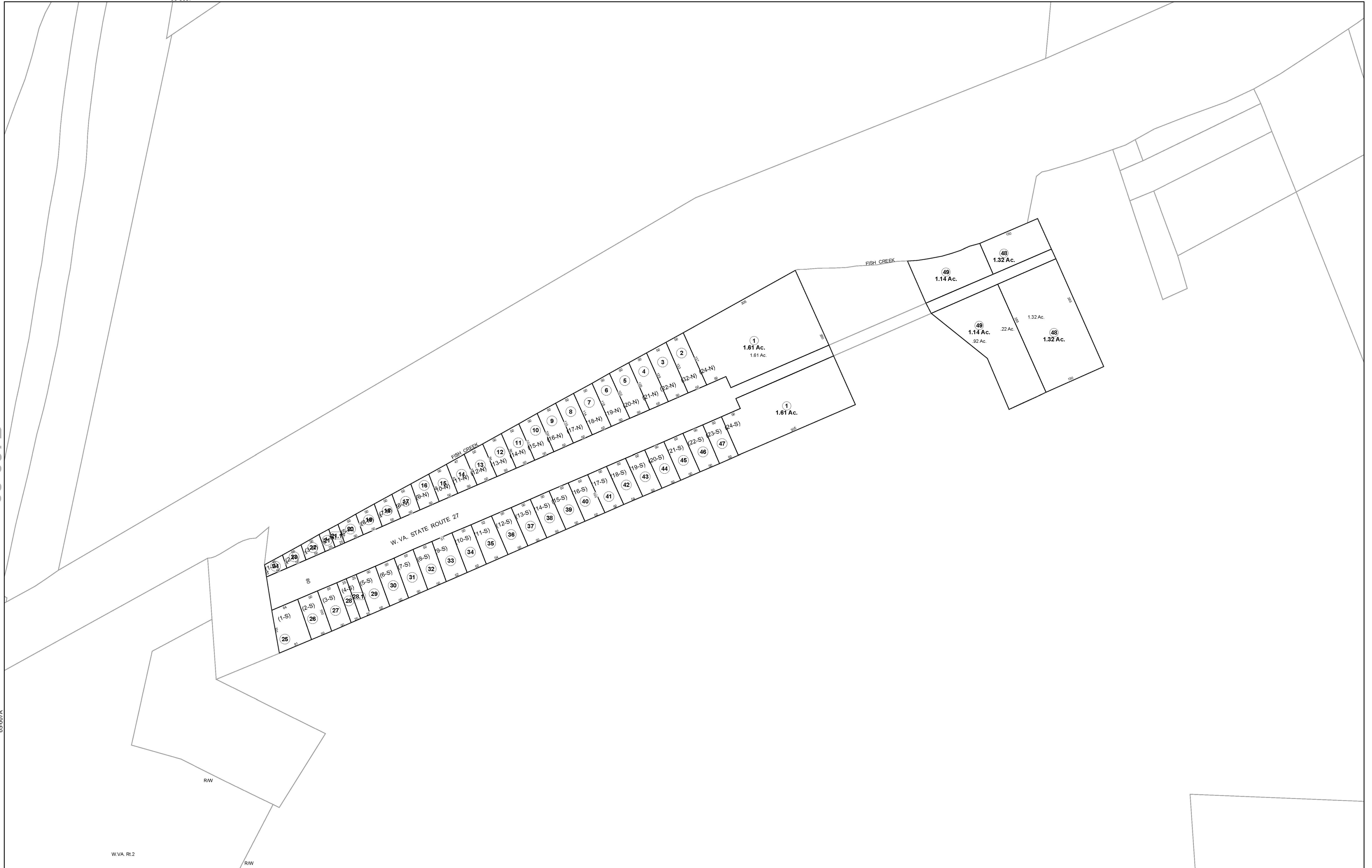


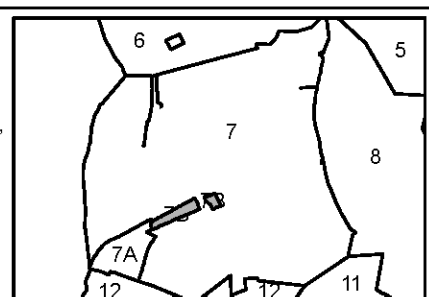
05-007B

05-007A



FOR TAX PURPOSES ONLY
 Prepared By:
Chris Kessler
 Marshall County Assessor

Legend		Restriction	
Property Line	—	Original Lot Line	—
Edge of pavement or roadway	- - - -	Deed lot number (in parenthesis)	(15)
Corporation line	· · · · ·	Parcel or index number	○
District line	- - - - -	Improvement	—
County Line	— · — · —	Railroad	—+—+—+—
		Water	—
			revised 7-1-2010 KAS
			All tax maps created under the provisions of neaprical legislation are the property of the Assessor of Marshall County, West Virginia and the reproduction, copying, modification, distribution or sale of such tax maps or any copies thereof without the written permission of the Marshall County Assessor is prohibited by law.



MARSHALL COUNTY - WEST VIRGINIA
 Office of Assessor

District: **05 Franklin Dist**
 Map No: **7B**
 Date: **Oct 07, 2011**
 Scale: **1 inch = 100 feet**