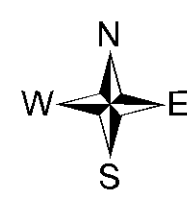
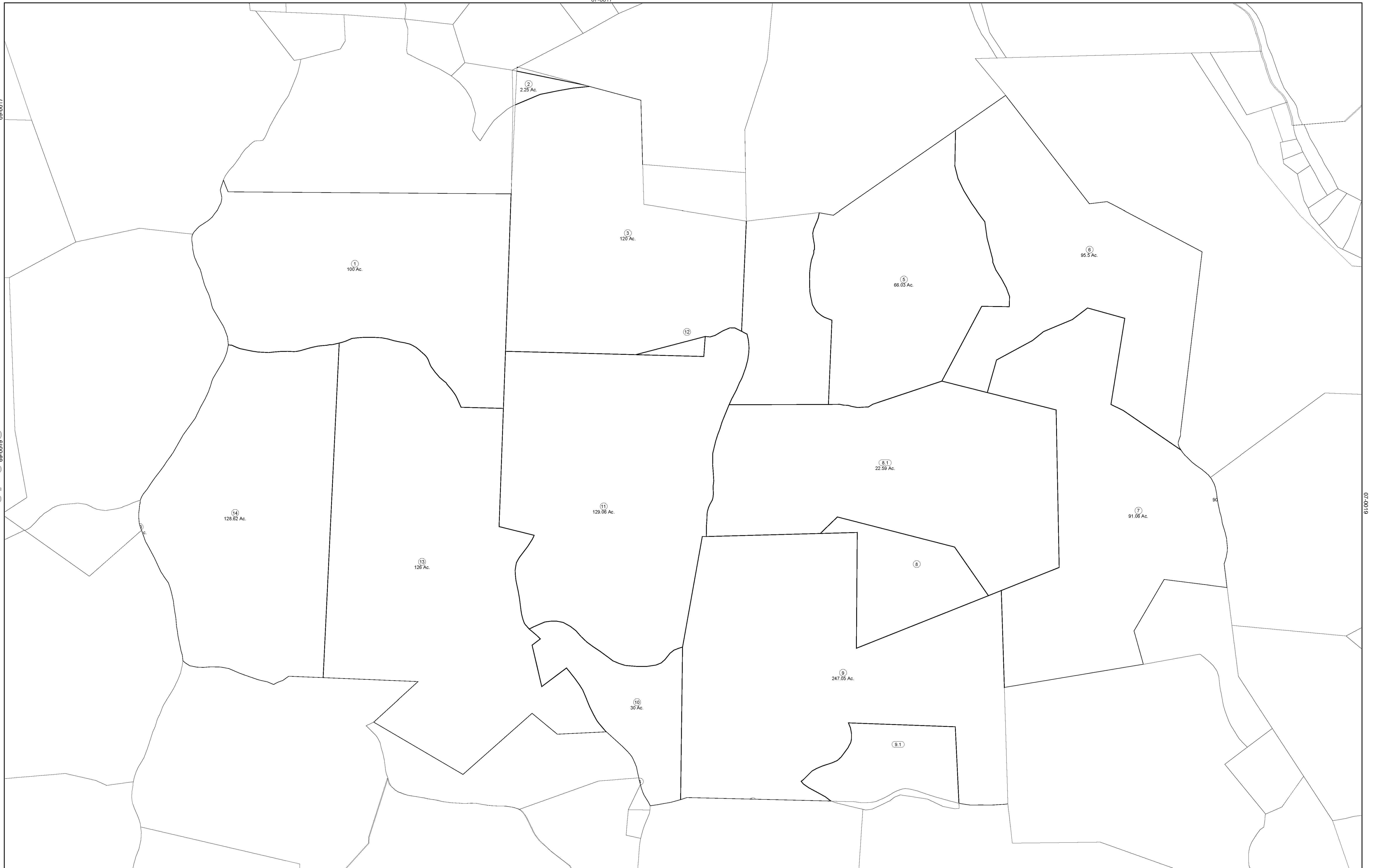


07-0017

09-0017

07-0018
06-0019

07-0019



FOR TAX PURPOSES ONLY
 Prepared By:
Chris Kessler
 Marshall County Assessor

Legend		07-0029
Property Line	—	Original Lot Line
Edge of pavement or roadway	- - - -	Deed lot number (in parenthesis)
Corporation line	- · - · -	Parcel or index number
District line	- · - · -	Improvement
County Line	- - - -	Railroad
		Water

Restriction		revised 7-1-2010 KAS
(15)	—	
○	—	
—	—	
—	—	

07-0028

revised 7-1-2010 KAS

All tax maps created under the provisions of neoprecipal legislation are the property of the Assessor of Marshall County, West Virginia and the reproduction, copying, modification, distribution or sale of such tax maps or any copies thereof without the written permission of the Marshall County Assessor is prohibited by law.

MARSHALL COUNTY - WEST VIRGINIA
 Office of Assessor

District: 07 Liberty Dist
Map No: 18
Date: Oct 07, 2011
Scale: 1 inch = 400 feet