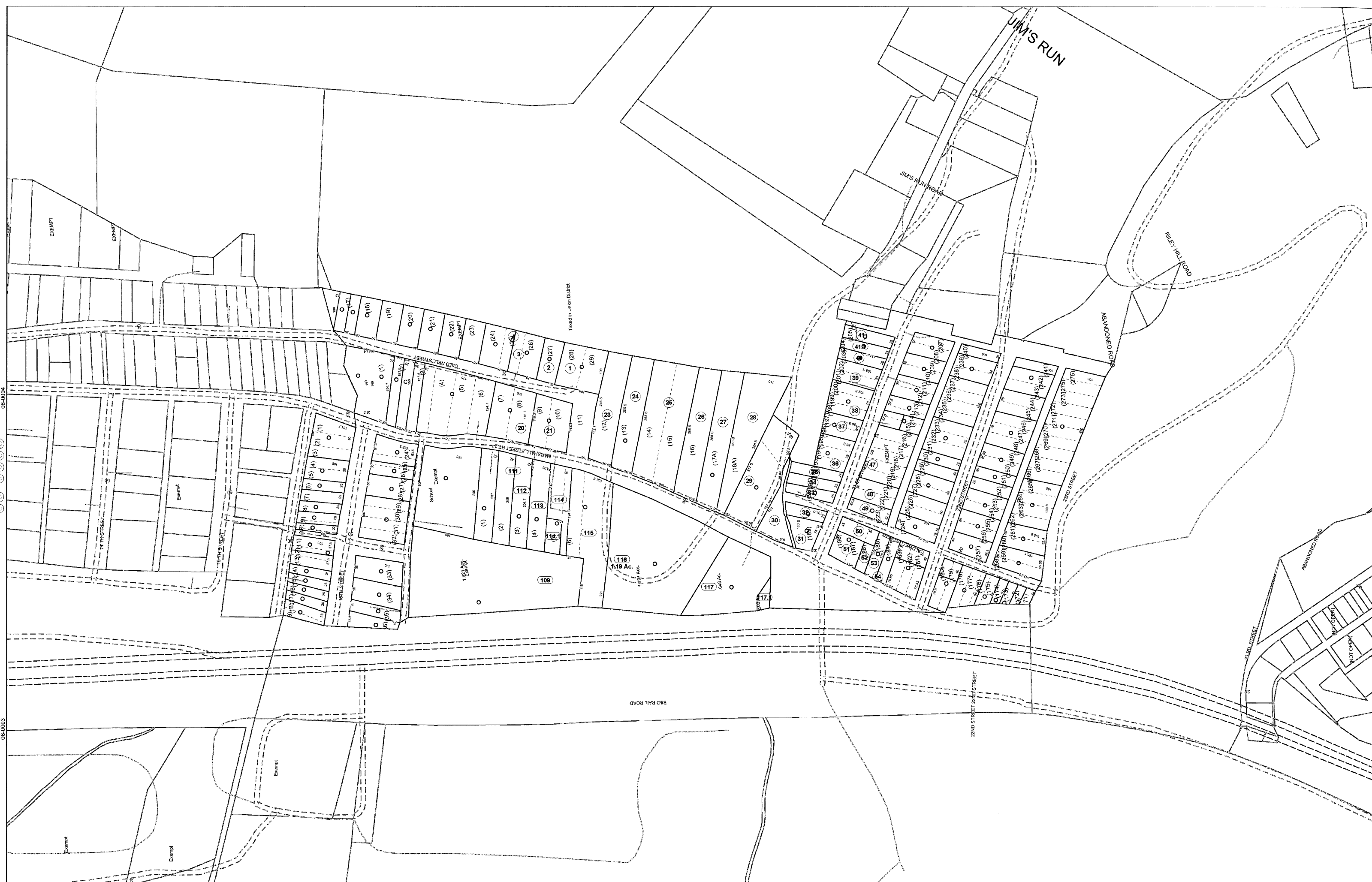
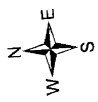


08-0005



08-0004

08-0003



FOR TAX PURPOSES ONLY

Prepared By:
Chris Kessler
 Marshall County Assessor

Legend

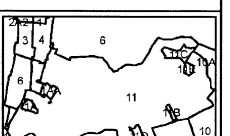
| | |
|-----------------------------|-----------|
| Property Line | — |
| Edge of pavement or roadway | - - - - - |
| Corporation line | · · · · · |
| District line | - · - · - |
| County Line | - - - - - |

| | |
|----------------------------------|---------|
| Original Lot Line | — |
| Deed lot number (in parenthesis) | (15) |
| Parcel or index number | 15 |
| Improvement | ○ |
| Railroad | —+—+—+— |
| Water | ~~~~~ |

08-0006

Restriction

All tax maps created under the provisions of reapportionment legislation are the property of the Assessor of Marshall County, West Virginia and the reproduction, copying, modification, distribution or sale of such tax maps or any copies thereof without the written permission of the Marshall County Assessor is prohibited by law.



MARSHALL COUNTY - WEST VIRGINIA
 Office of Assessor

District: 08 McMechen Corp
 Map No: 5
 Date: Aug 24, 2009
 Scale: 1 inch = 100 feet