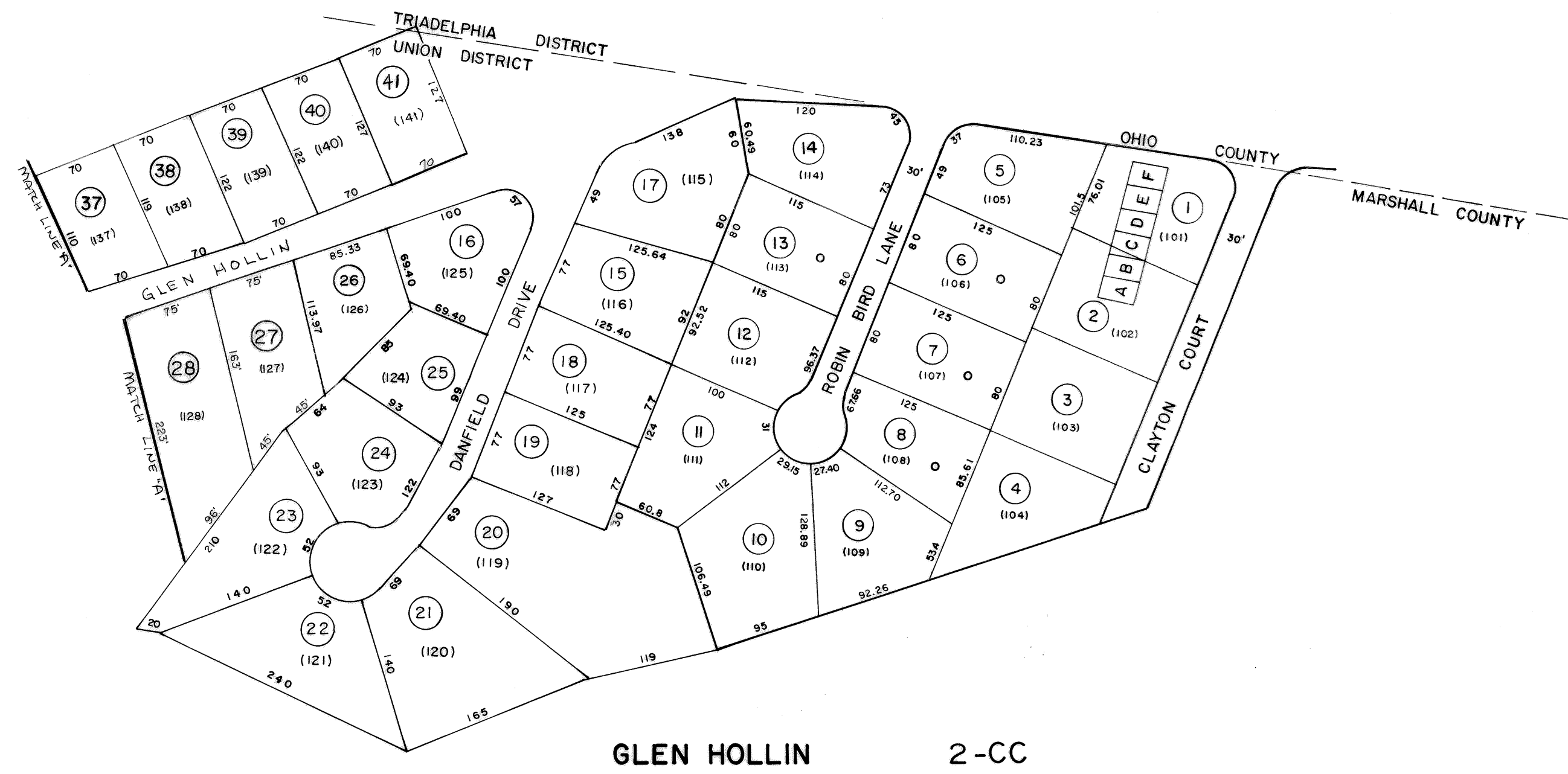
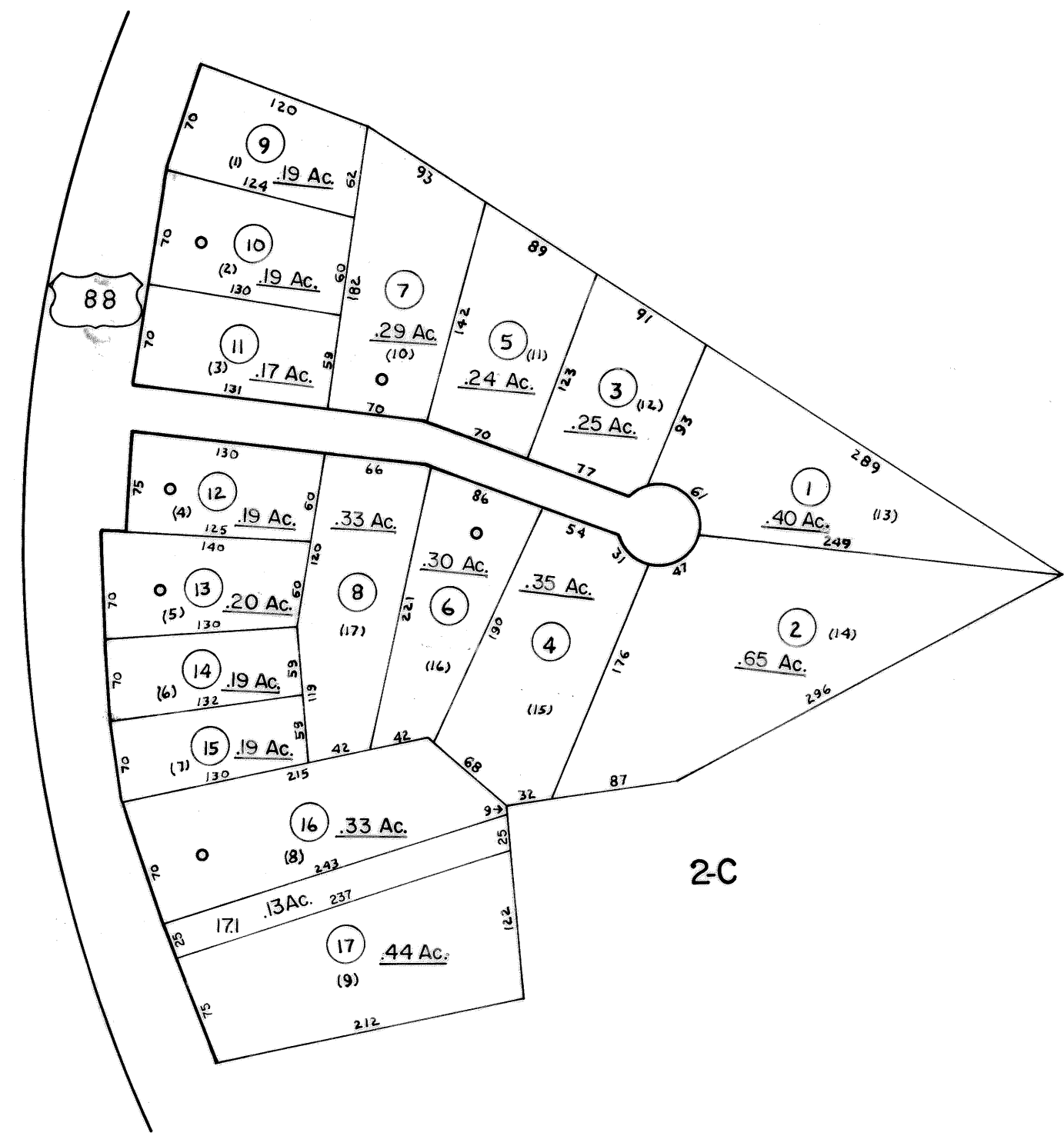
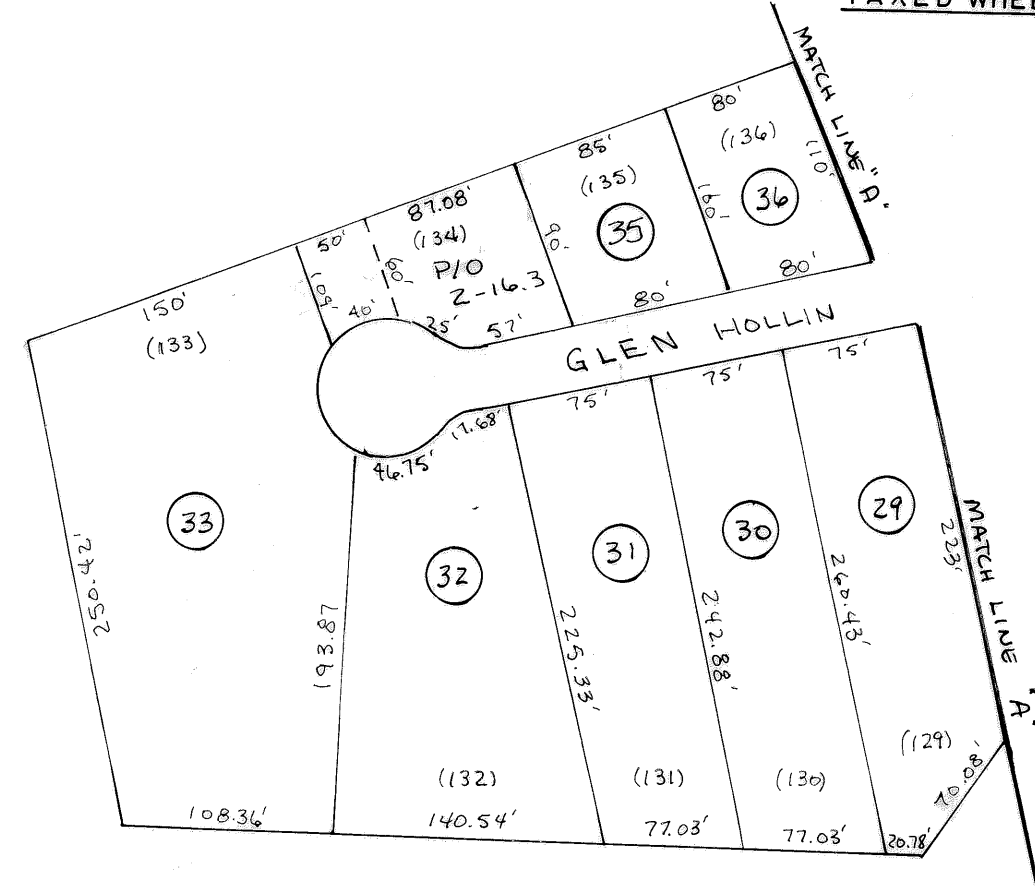


SEE OHIO COUNTY - W99



GLEN HOLLIN 2-CC

ALL 2-CC PARCELS
TAXED WHEELING-SANDHILL



2-C



For Tax Purposes Only

Prepared by
LOCAL GOVERNMENT RELATIONS DIV.
STATE TAX COMMISSIONER
CHARLESTON, W.VA.

LEGEND

Property line	-----	Original lot line	-----
Edge of pavement or roadway	-----	Deed lot number	(15)
Corporation line	-----	Parcel or index number	(99)
District line	-----	Improvement	o
County line	-----	Railroad	+

REVISIONS

1	10-9-74	DAE
2	JULY 1980	TRL
3	July 1982	SAJ
4	Revised to 7/18/91	DSH
5	Revised to 7/18/91	SAJ
6	OGIS 7/18/91	DSH
7	OGIS 8/10/92	SAJ
8	OGIS 3-93	RD
9	K STALNAKER 7/94	
10	K Stalnakur 7/99	

RESTRICTION

All tax maps created under the provisions of reappraisal legislation are the property of the State of West Virginia and the reproduction, copying, distribution or sale of such tax maps or any copies thereof without the written permission of the State Tax Commissioner is prohibited by law.

KEY MAP

2	2	2
2	2C	2B
2B	2B	2B

COUNTY of MARSHALL
Office of Assessor
MOUNDSVILLE, W. VA.

UNION DISTRICT 13

Map 2C
MAP 2CC

Date, Aerial Photography:
Photo No:

Date, Map: 12-22-81
Scale: 1" = 100'