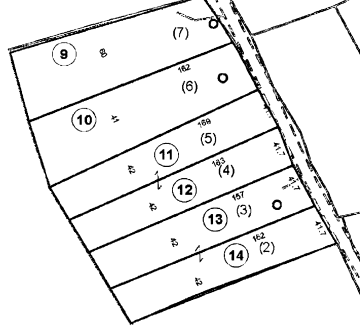
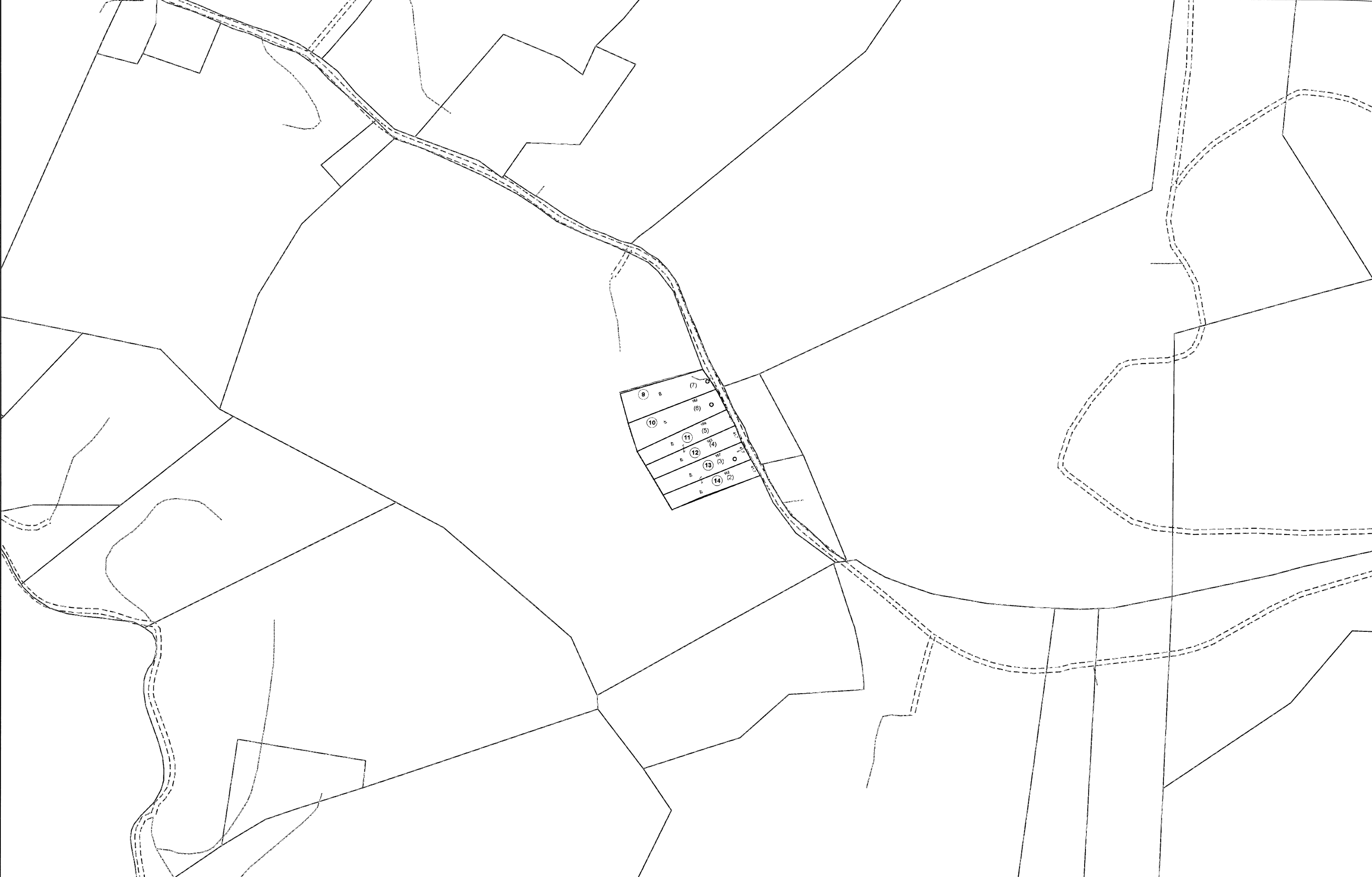


13-005B



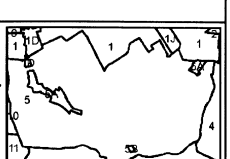
FOR TAX PURPOSES ONLY
Prepared By:
Chris Kessler
Marshall County Assessor

Legend	
Property Line	—
Edge of pavement or roadway	- - - - -
Corporation line	· · · · ·
District line	- · - · -
County Line	- - - - -

Original Lot Line	—
Deed lot number (in parenthesis)	(15)
Parcel or index number	⊙
Improvement	○
Railroad	—+—+—+—+—
Water	~~~~~

Restriction	
—	—
—	—
—	—
—	—
—	—
—	—
—	—
—	—

All tax maps created under the provisions of reappraisal legislation are the property of the Assessor of Marshall County, West Virginia and the reproduction, copying, modification, distribution or sale of such tax maps or any copies thereof without the written permission of the Marshall County Assessor is prohibited by law.



13-0005

MARSHALL COUNTY - WEST VIRGINIA
Office of Assessor

District: 13 Union Dist
Map No: 5B
Date: Aug 24, 2009
Scale: 1 inch = 100 feet