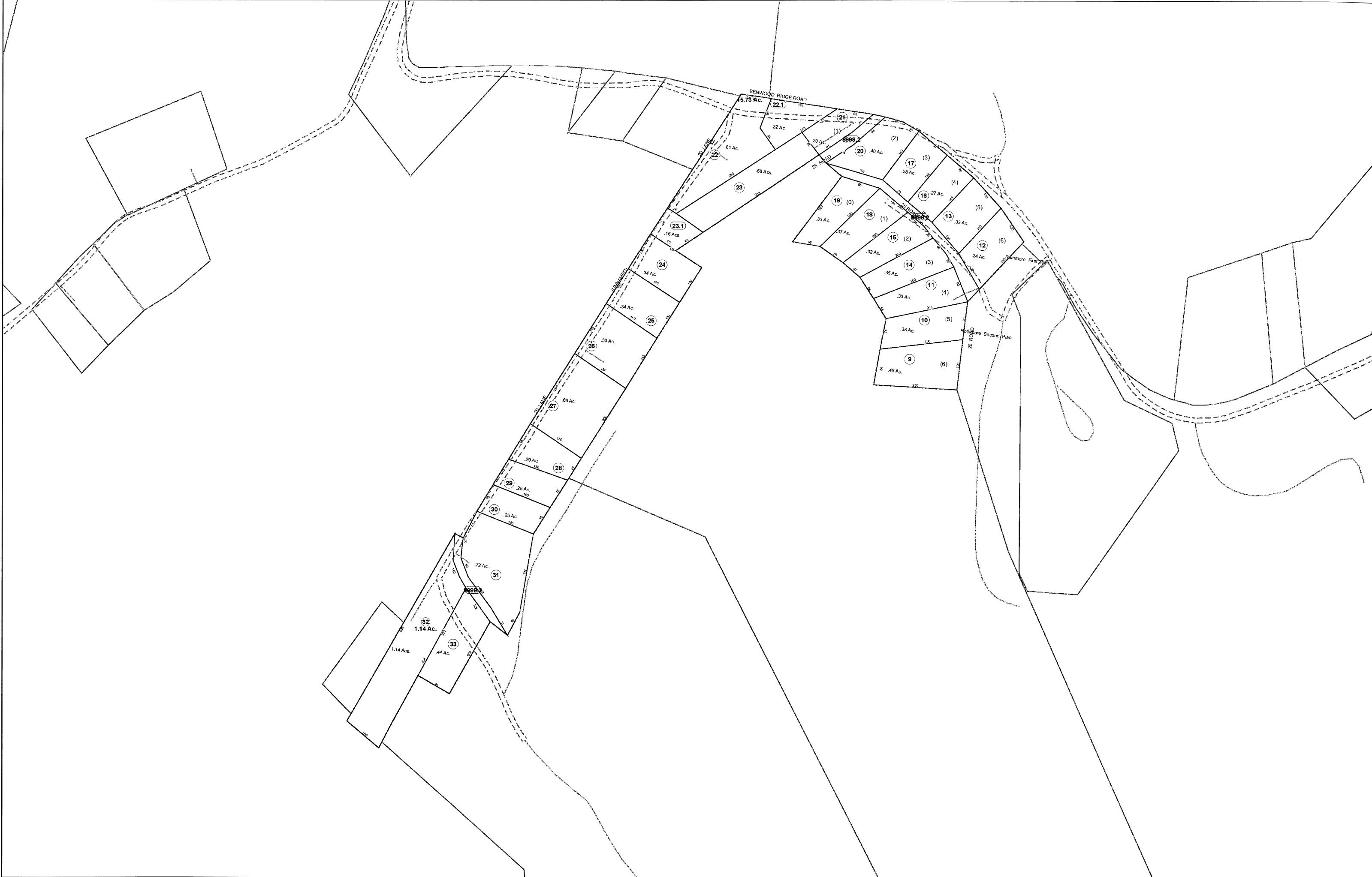


13-006B



13-006B
FOR TAX PURPOSES ONLY

Prepared By:
Chris Kessler
Marshall County Assessor

Legend		Restriction	
Property Line	—	Original Lot Line	—
Edge of pavement or roadway	- - - -	Deed lot number (in parenthesis)	(15)
Corporation line	· · · · ·	Parcel or index number	○
District line	- · - · -	Improvement	—
County Line	- - - - -	Railroad	—+—
		Water	—

All tax maps created under the provisions of reappraisal legislation are the property of the Assessor of Marshall County, West Virginia and the reproduction, copying, modification, distribution or sale of such tax maps or any copies thereof without the written permission of the Marshall County Assessor is prohibited by law.

MARSHALL COUNTY - WEST VIRGINIA
Office of Assessor

District: 13 Union Dist
Map No: 6B
Date: Aug 24, 2009
Scale: 1 inch = 100 feet