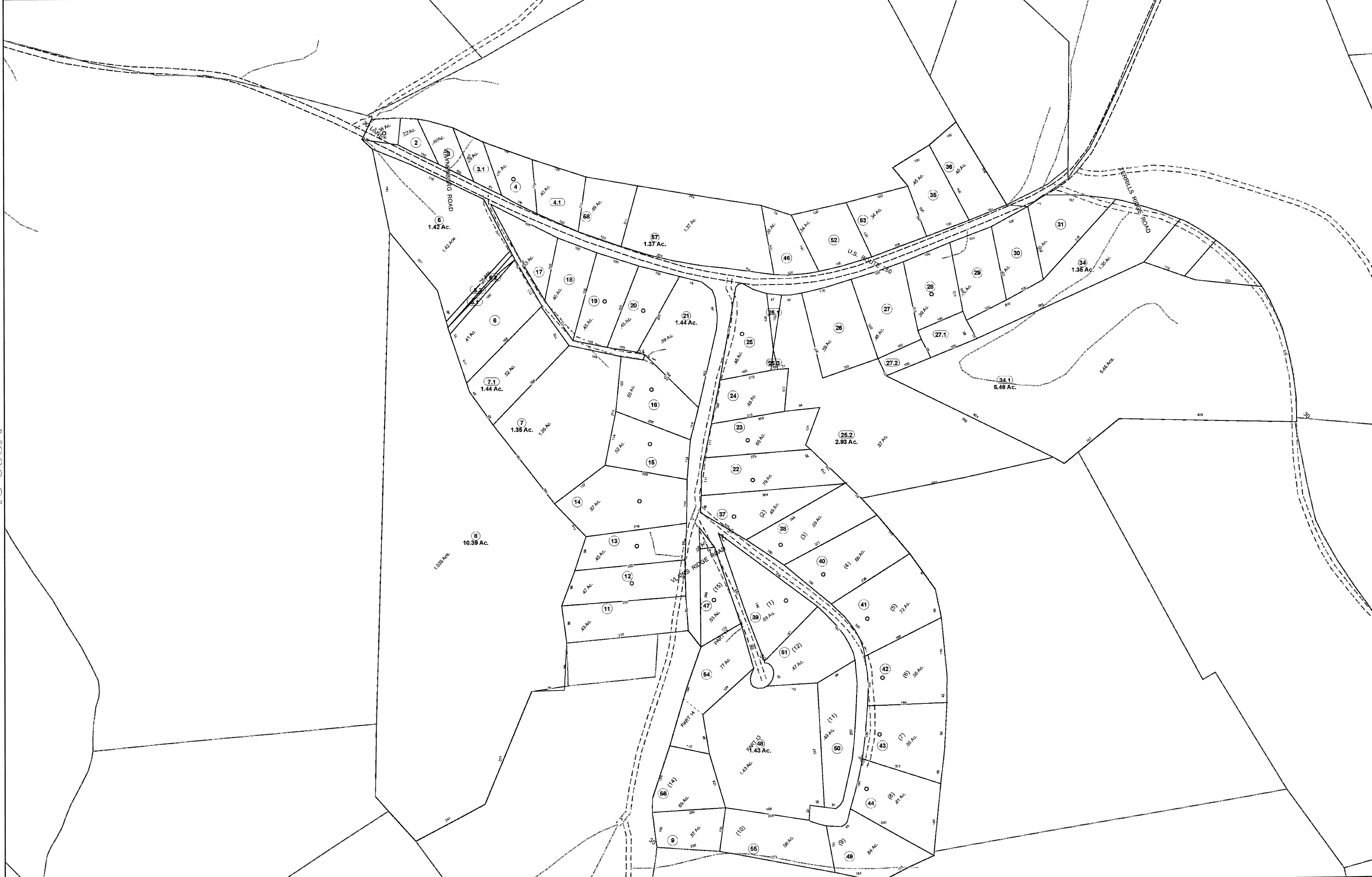


15-008A



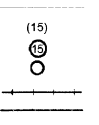
FOR TAX PURPOSES ONLY
 Prepared By:
Chris Kessler
 Marshall County Assessor

15-008

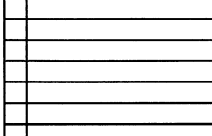
Legend

- Property Line
- Edge of pavement or roadway
- Corporation line
- District line
- County Line

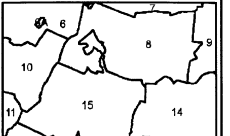
- Original Lot Line
- Deed lot number (in parenthesis)
- Parcel or index number
- Improvement
- Railroad
- Water



Restriction



All tax maps created under the provisions of reappraisal legislation are the property of the Assessor of Marshall County, West Virginia and the reproduction, copying, modification, distribution or sale of such tax maps or any copies thereof without the written permission of the Marshall County Assessor is prohibited by law.



MARSHALL COUNTY - WEST VIRGINIA
 Office of Assessor

District: **15 Webster Dist**
 Map No: **8A**
 Date: **Aug 24, 2009**
 Scale: **1 inch = 100 feet**