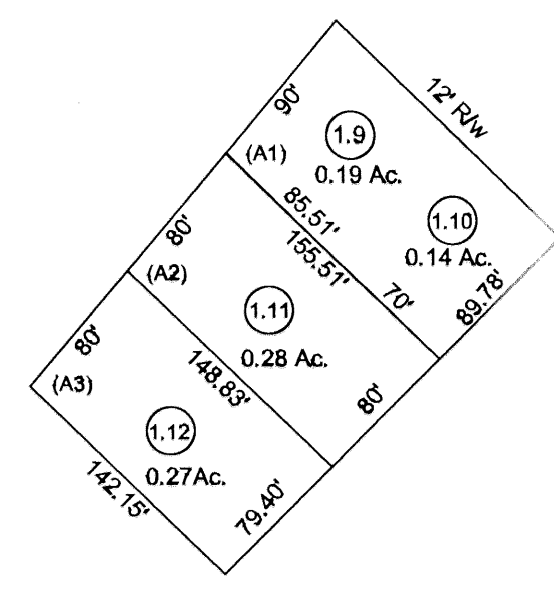
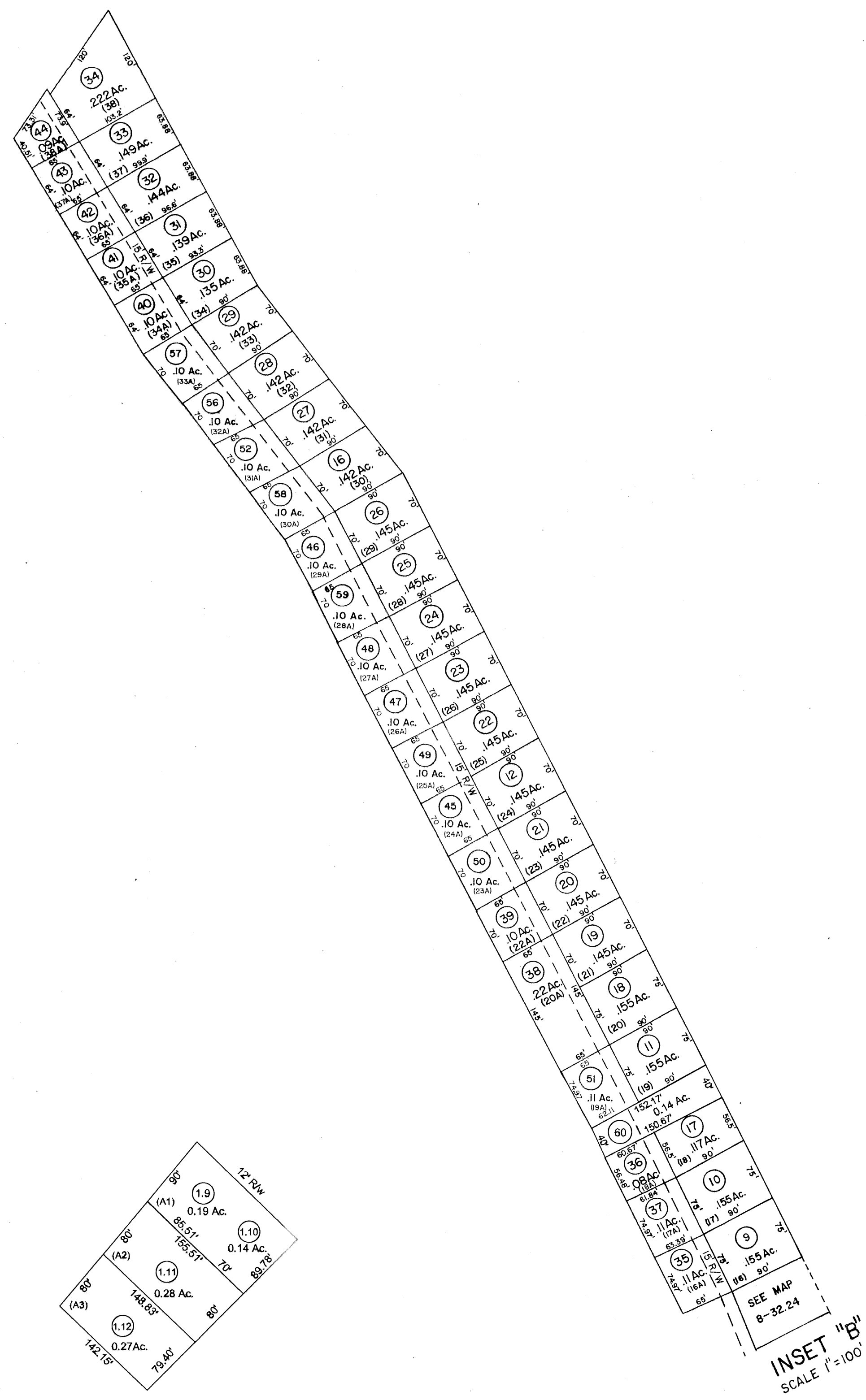
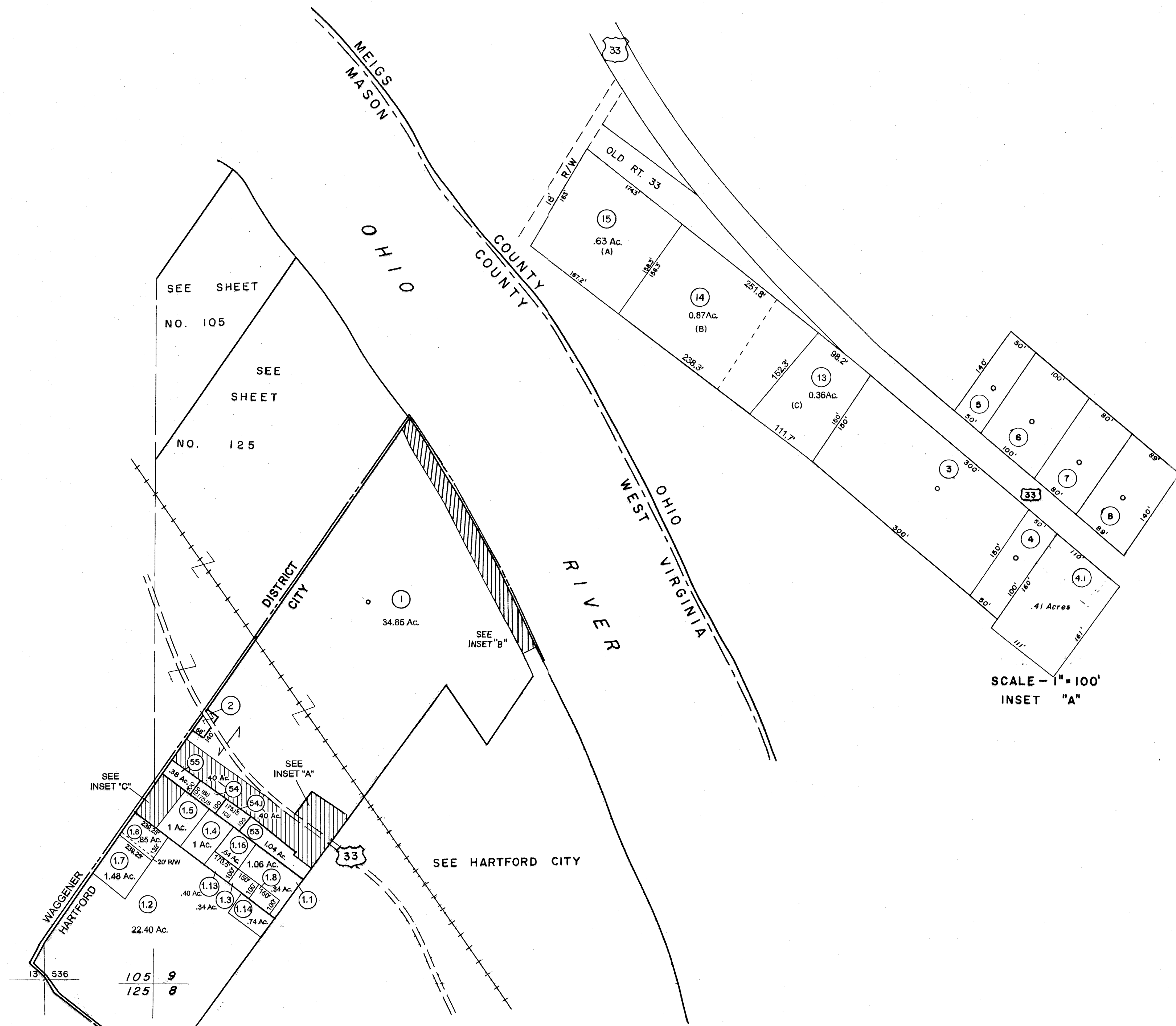


105 9



For Tax Purposes Only  
 Prepared by  
**MICHAEL BAKER, JR., INC.**  
 Consulting Engineers  
 Rochester, Pennsylvania

Legend	
Property line	Original lot line
Edge of pavement or roadway	Deed lot number
Corporation line	Parcel or index number
District line	Improvement
County line	Railroad

Revisions			
1	Thru D.B. 171	9	03-09,05-14-04 RDT
2	REV. TO 1-1-89	REB	10 02-09,9-20,12-13-05 RDT
3	OGIS 12-93	RD	11 5-8,6-11-06 RDT 2-9-07 RDT
4	OGIS 1/7/96	SAJ	12
5	7-1-98	JEB	13
6	10-1-99	J.E.B	14
7	11-15-2002	JEB	15
8	6-24,7-15,11-18-03	RDT	16

KEY MAP

**MASON COUNTY**  
 STATE OF WEST VIRGINIA  
 Office of Assessor

DISTRICT  
**HARTFORD CITY**  
 SHEET NO: **9**  
 Date, Aerial Photography: 1958 Date, Map: 1959  
 Photo No. Scale: 1" = 400'

