

SEE SHEET NO. 13

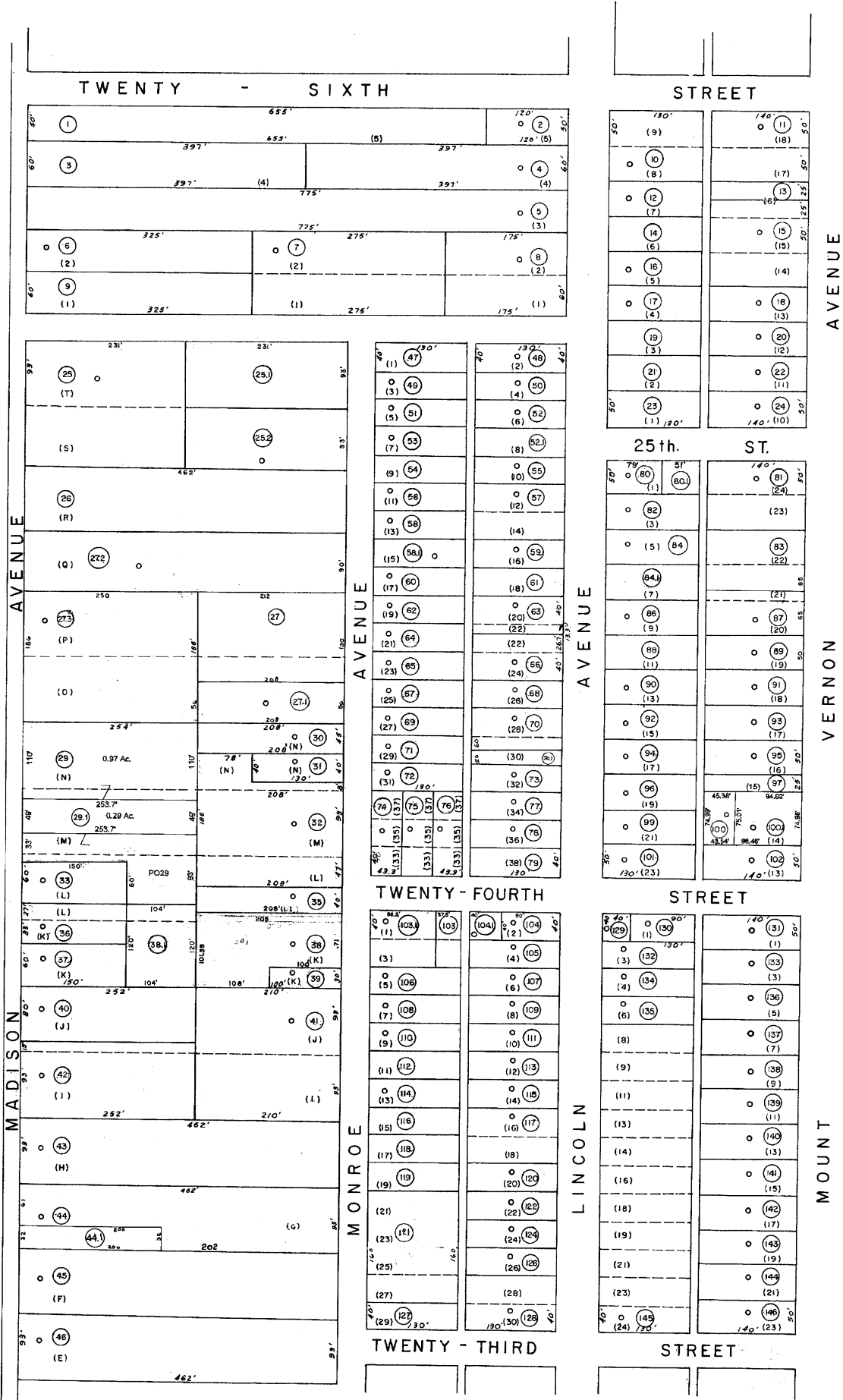
U. S. NAVAL DEPOT

OHIO RIVER

P/O 9-18

SEE SHEET NO. 09

OAK STREET BALTIMORE RAILROAD OHIO



For Tax Purposes Only  
Prepared by  
MICHAEL BAKER, JR., INC.  
Consulting Engineers  
Rochester, Pennsylvania

Legend

Property line	—	Original lot line	- - - - -
Edge of pavement or roadway	— · — · —	Dead lot number	(15)
Corporation line	- - - - -	Parcel or index number	(22)
District line	- · - · -	Improvement	○
County line	- - - - -	Railroad	— + — + —

Revisions

1	THOMAS D. B. 171	9	4/27/2010 PAW	17	PENTREE, INC. 7-1-83
2	7-21-72	10		18	
3	9-74	11		19	
4	7/1/84	12		20	
5	REV. TO 1-1-89	13		21	
6	OGIS 10-5-92	14		22	
7	11-15-2002	15		23	
8	4-10-08	16		24	

KEY MAP



MASON COUNTY  
STATE OF WEST VIRGINIA  
Office of Assessor

DISTRICT  
POINT PLEASANT  
SHEET NO: 11  
Date, Aerial Photography: 1958  
Date, Map: 1959  
Photo No: Scale: 1" = 100'