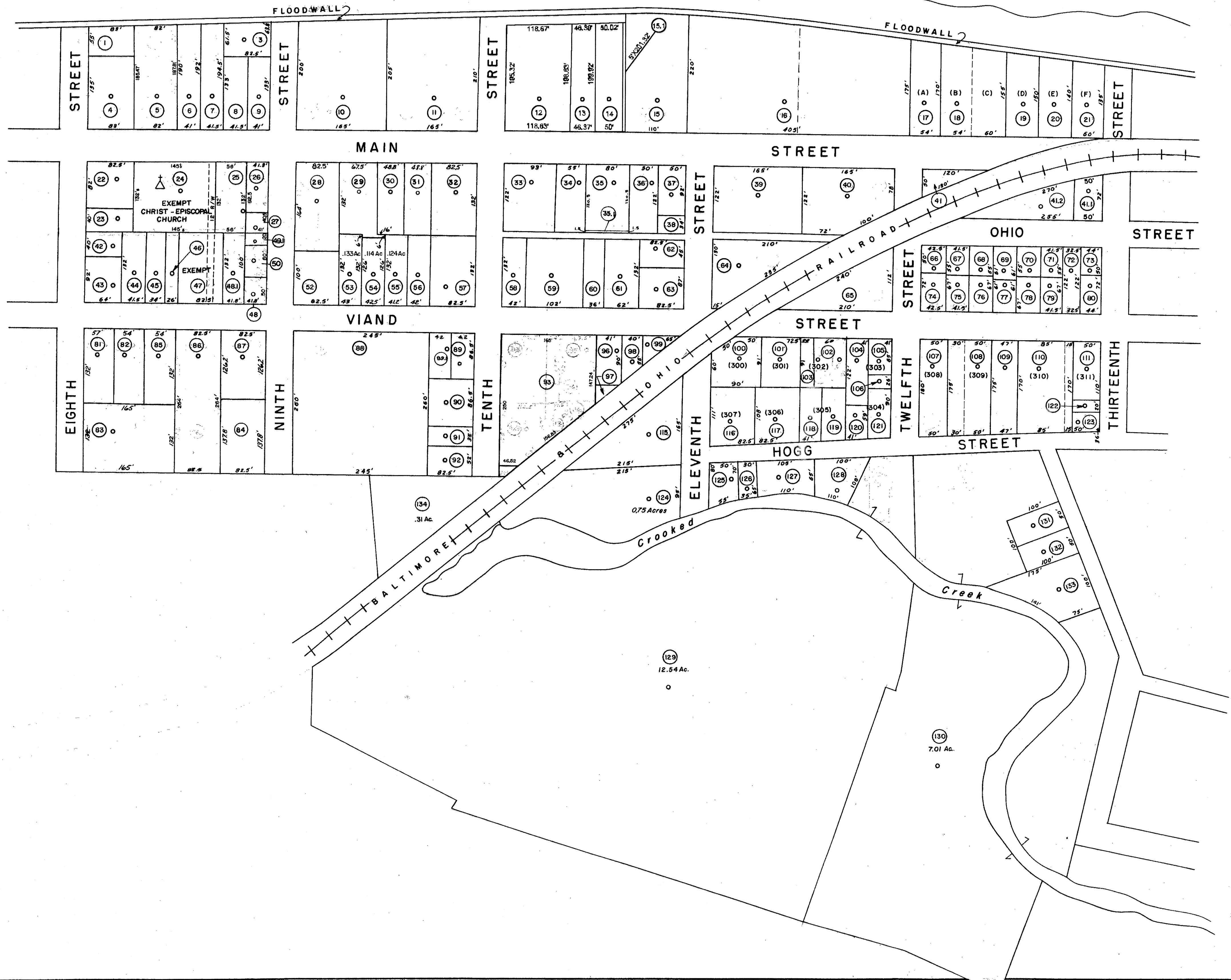
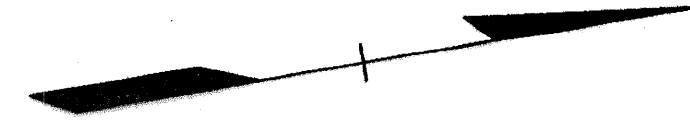


OHIO RIVER



For Tax Purposes Only

Prepared by
MICHAEL BAKER, JR., INC.
Consulting Engineers
Rochester, Pennsylvania

Legend

| | | | |
|-----------------------------|---|------------------------|-----------|
| Property line | — | Original lot line | - - - - - |
| Edge of pavement or roadway | — | Deed lot number | (15) |
| Corporation line | — | Parcel or index number | (99) |
| District line | — | Improvement | o |
| County line | — | Railroad | + |

Revisions

| | | | | | | |
|---|----------------|----|-------------|----|---------------|--------|
| 1 | Thru DB.17/ | 2 | 8/26/07 RDT | 17 | PENTREE, INC. | 7-1-83 |
| 2 | 7-21-72 | 10 | | 18 | | |
| 3 | 9-74 PAH | 11 | | 19 | | |
| 4 | 7/1/84 | 12 | | 20 | | |
| 5 | REV. TO 1-1-89 | 13 | | 21 | | |
| 6 | OGIS 10-5-92 | 14 | | 22 | | |
| 7 | OGIS 1/12/96 | 15 | | 23 | | |
| 8 | 7-1-98 JEB | 16 | | 24 | | |

KEY MAP

04 05 06
01

MASON COUNTY

STATE OF WEST VIRGINIA

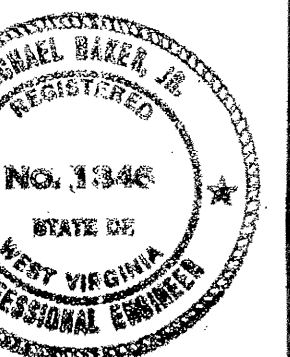
Office of Assessor

DISTRICT

POINT PLEASANT

SHEET NO: 05

Date, Aerial Photography: 1958
Photo No:



Date, Map: 1959
Scale: 1" = 100'