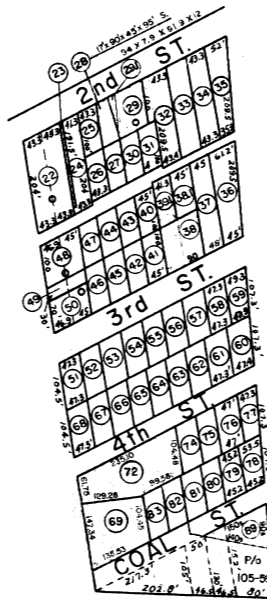
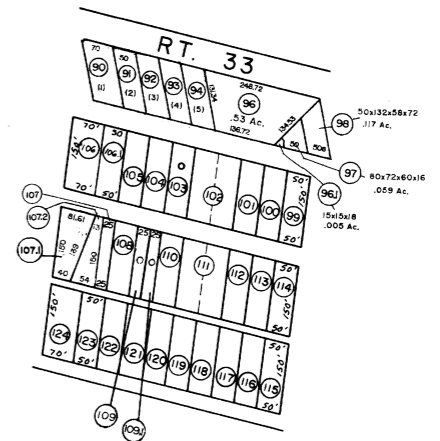


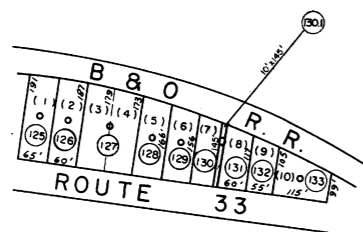
INSERT "A"  
CHRISTINE FRUTH ADD.  
Scale: 1"=100'



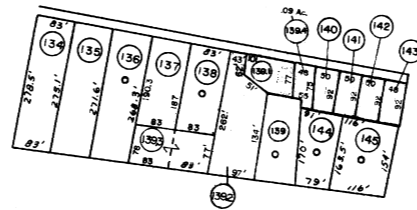
INSERT "B"  
Scale: 1"=200'



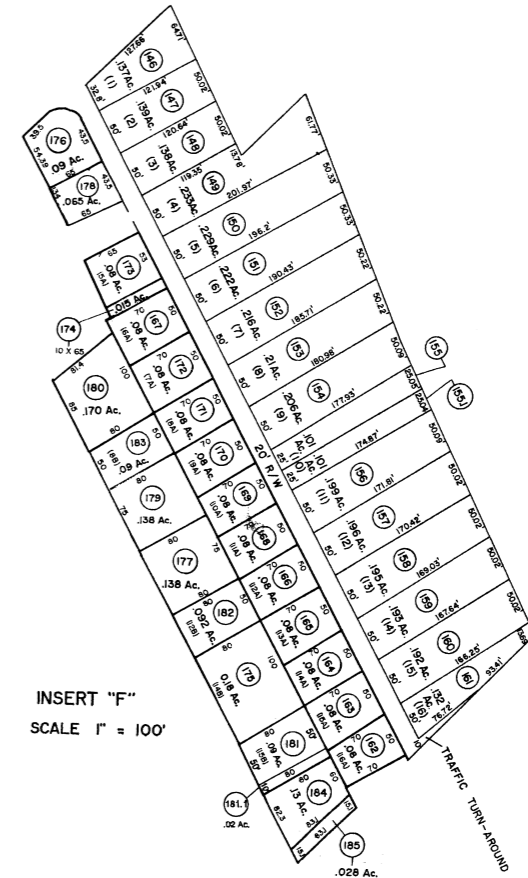
INSERT "C"  
Scale: 1"=200'



INSERT "D"  
Scale: 1"=200'

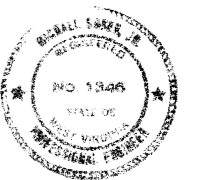


INSERT "E"  
Scale: 1"=200'



INSERT "F"  
SCALE 1"=100'

SEE SHEET 105 FOR INSERT 167



For Tax Purposes Only

Prepared by  
MICHAEL BAKER, JR., INC.  
Consulting Engineers  
Rochester, Pennsylvania

Legend

Property line	---	Original lot line	---
Edge of pavement or roadway	---	Deed lot number	(15)
Corporation line	---	Parcel or index number	(9)
District line	---	Improvement	o
County line	---	Railroad	+

Revisions

1	Thru D.B. 171	9	OGIS	1/8/96	SAJ	17	PENTREE, INC.	7-1-83
2	6-15-72	JAP	10	7-1-96	JEB	18		
3	7/27/79	JOM	11	3-15-99	JEB	19		
4	7/1/84	RLB	12	10-1-99	JEB	20		
5	Planned to 7-1-85	JEB	13	9-1-2000	JEB	21		
6	1-1-89	TRL	14	10-1-2001	JEB	22		
7	OGIS 10-5-92	JEB	15	11-15-2002	JEB	23		
8	OGIS	RD	16	9-30-2002	RDT	24		

KEY MAP



MASON COUNTY  
STATE OF WEST VIRGINIA  
Office of Assessor

DISTRICT  
WAGGENER

SHEET NO: 04

Date, Aerial Photography: 1958 Date, Map: 1959  
Photo No: Scale: As Shown