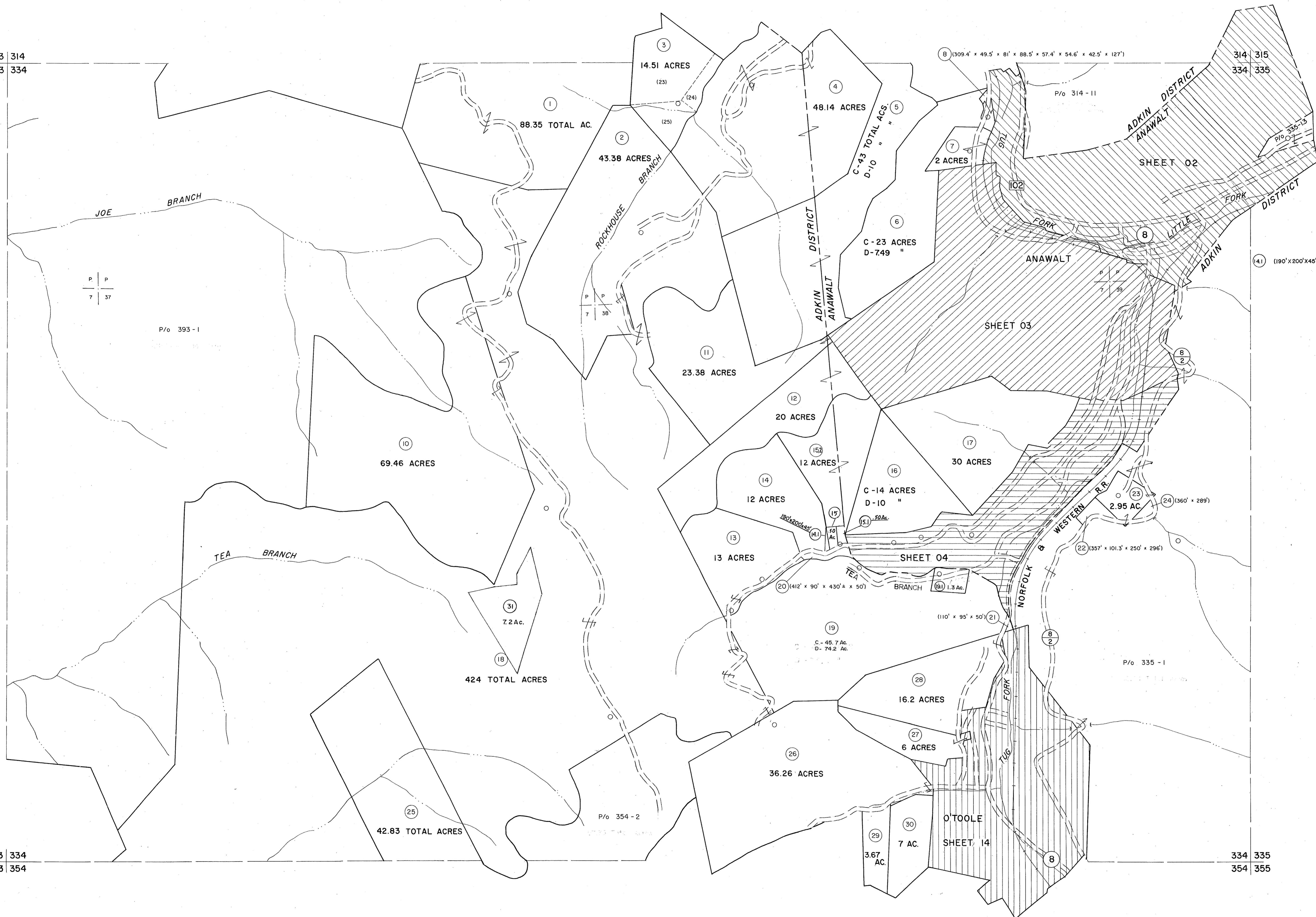


313 314
333 334

314 315
334 335

333 334
353 354

334 335
354 355

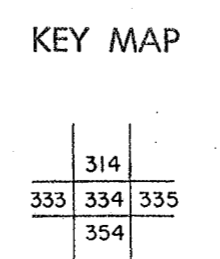


For Tax Purposes Only

Prepared by
MICHAEL BAKER, JR., INC.
 Consulting Engineers
 Rochester, Pennsylvania

Legend	
Property line	—————
Edge of pavement or roadway	—————
Corporation line	—————
District line	—————
County line	—————
Original lot line	—————
Deed lot number	(15)
Parcel or index number	(99)
Improvement	o
Railroad	—————

Revisions			
1	4-15-64	9	3/2/14 S&H
2	7-1-83 12-9-74 DAE	10	
3	7-1-83 L.E.S.	11	
4	7/1/84 R.L.B.	12	
5	July 1985 JAB	13	
6	SLS INC. 1/4/89 DSW	14	
7	5/23/04 S&H	15	
8		16	



McDOWELL COUNTY
 STATE OF WEST VIRGINIA
 Office of Assessor

DISTRICT **ADKIN ANAWALT**

SHEET NO: 334

Date, Aerial Photography: April, 1961 Date, Map: July, 1962
 Photo No: Scale: 1" = 400'