

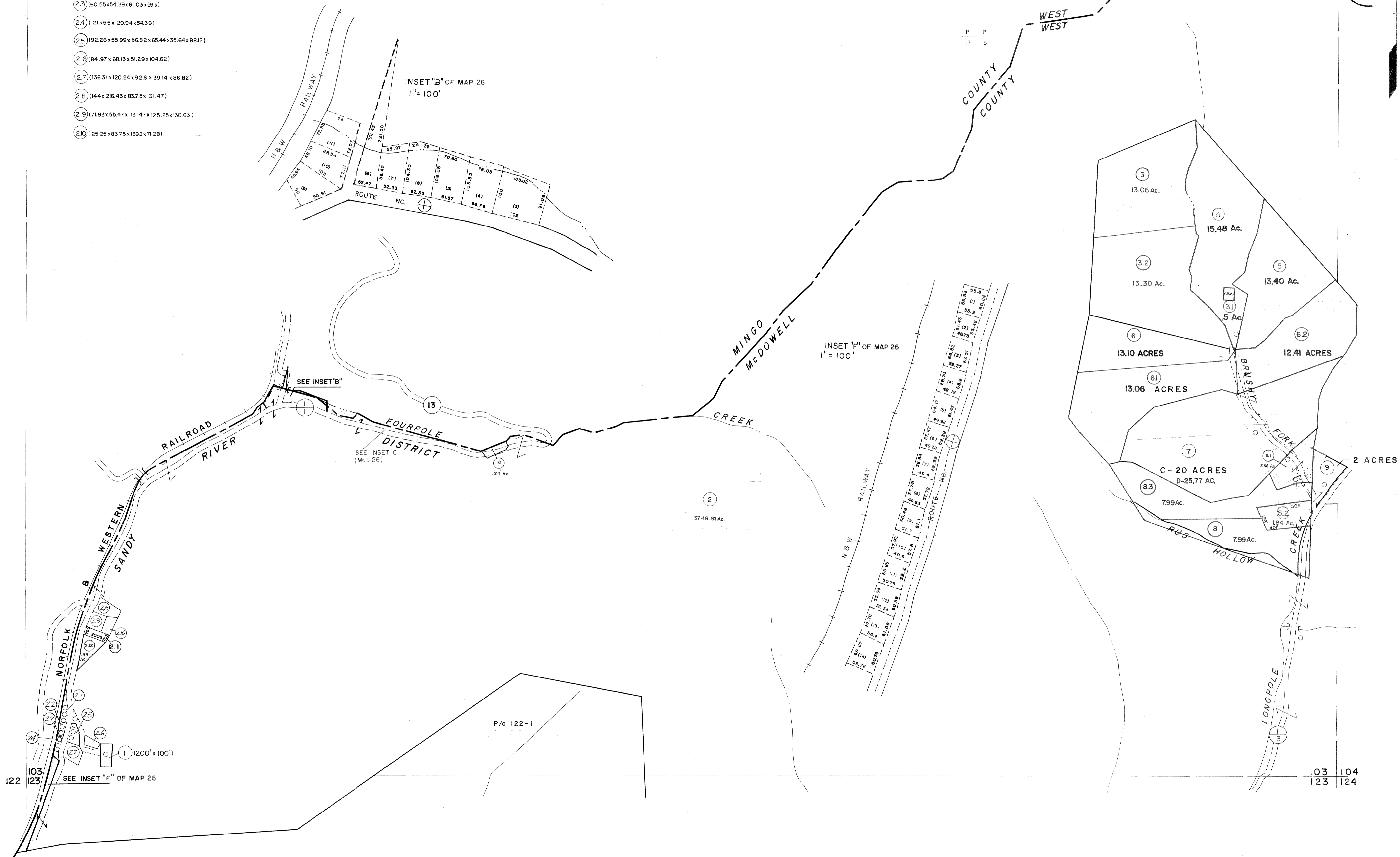
103

- (2.1) 235.99 x 60.78 x 245.99 x 10.85
- (2.2) 62.27 x 59.5 x 62.39 x 60.78
- (2.3) 60.55 x 54.39 x 61.03 x 59.5
- (2.4) 121 x 55 x 120.94 x 54.39
- (2.5) 92.26 x 55.99 x 86.82 x 65.44 x 35.64 x 88.12
- (2.6) 84.97 x 68.13 x 51.29 x 104.62
- (2.7) 136.31 x 120.24 x 92.6 x 39.14 x 86.82
- (2.8) 144 x 216.43 x 83.75 x 131.47
- (2.9) 171.93 x 55.47 x 131.47 x 125.25 x 130.63
- (2.10) 125.25 x 83.75 x 139.8 x 71.28

P P
17 4

P P
17 5

103 104



INSET "B" OF MAP 26
1" = 100'

INSET "F" OF MAP 26
1" = 100'

SEE INSET "C"
(Map 26)

SEE INSET "F" OF MAP 26

For Tax Purposes Only

Prepared by
MICHAEL BAKER, JR., INC.
 Consulting Engineers
 Rochester, Pennsylvania

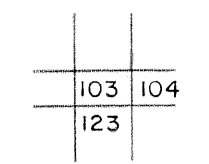
Legend

Property line	—	Original lot line	—
Edge of pavement or roadway	—	Deed lot number	(15)
Corporation line	—	Parcel or index number	(22)
District line	—	Improvement	o
County line	—	Railroad	—

Revisions

1	4-15-64	9	5-15-05 HES	17
2	Revised to 7-1-85	10	8/27/06 SAH	18
3	July 1988	11	6-18-07 HES	19
4	Revised to 7-1-88	12		20
5	O.G.I.S 5-15-95 J.E.B	13		21
6	O.G.I.S 12-1-96 J.E.B	14		22
7	SLS INC. 6/22/98 DSW	15		23
8	ESI 4/19/01 REK	16		24

KEY MAP



McDOWELL COUNTY

STATE OF WEST VIRGINIA

Office of Assessor

DISTRICT

SANDY RIVER

SHEET NO: 103

Date, Aerial Photography: April, 1961 Date, Map: July, 1962
 Photo No: Scale: 1" = 400'