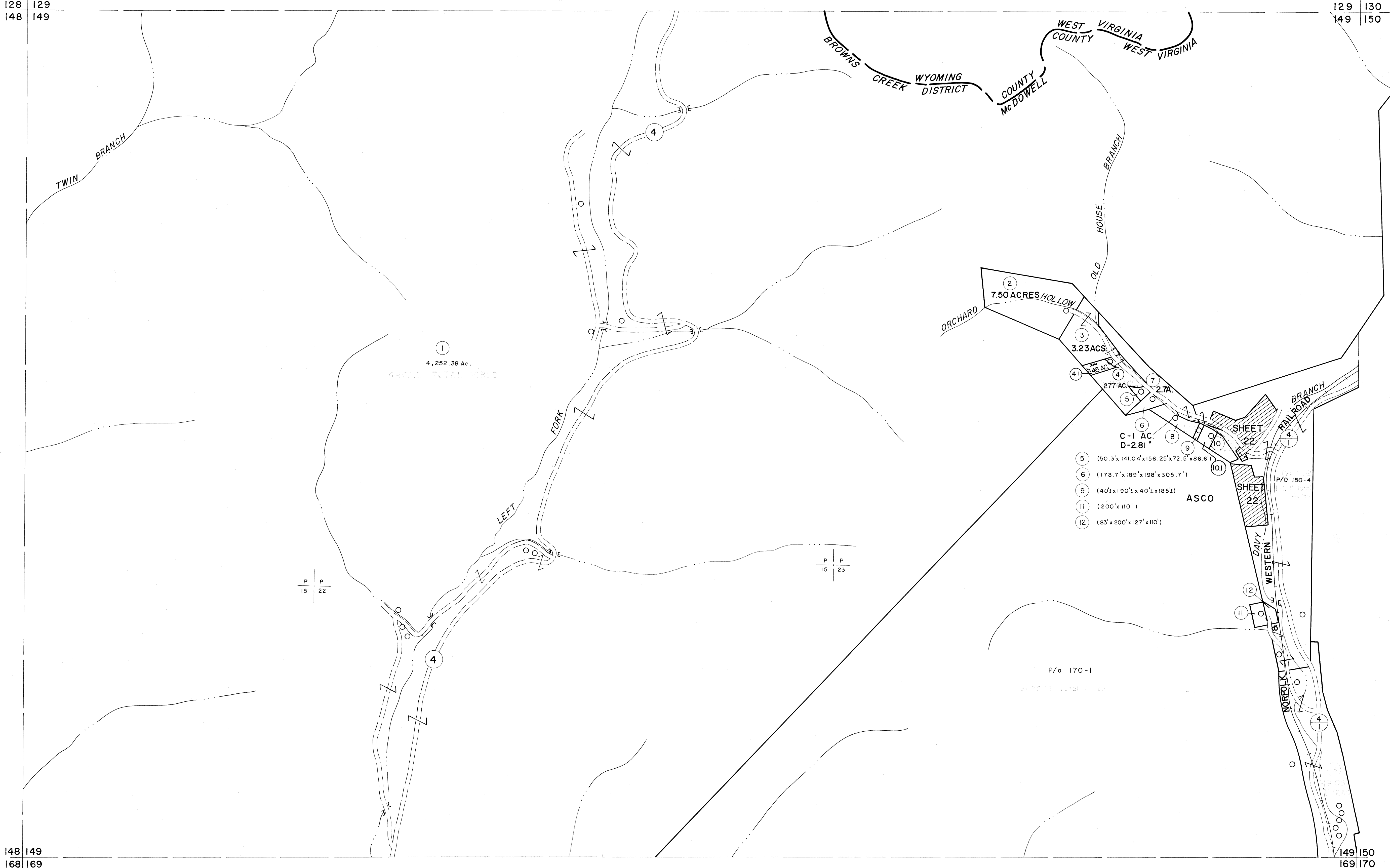


128 129
148 149

129 130
149 150

148 149
168 169

149 150
169 170



- 5 (50.3' x 141.04' x 156.25' x 72.5' x 86.6')
- 6 (178.7' x 189' x 198' x 305.7')
- 9 (40' x 190' x 40' x 185')
- 11 (200' x 110')
- 12 (83' x 200' x 127' x 110')

P P
15 22

P P
15 23

P/O 170-1

For Tax Purposes Only

Prepared by
MICHAEL BAKER, JR., INC.
Consulting Engineers
Rochester, Pennsylvania

Legend	
Property line	—
Edge of pavement or roadway	- - - -
Corporation line	- · - · -
District line	- - - -
County line	- · - · -
Original lot line	—
Deed lot number	(15)
Parcel or index number	(29)
Improvement	○
Railroad	—+—+—+—

Revisions			
1	4-15-64	9	17
2	12-3-74	10	18
3	Revised to 7-1-83	11	19
4	July 1985	12	20
5	O.G.'S 12-1-96	13	21
6	4-4-5 5-15-05	14	22
7		15	23
8		16	24

KEY MAP

McDOWELL COUNTY
STATE OF WEST VIRGINIA
Office of Assessor

DISTRICT
BROWNS CREEK

SHEET NO: 149

Date, Aerial Photography: April, 1961 Date, Map: July, 1962
Photo No: Scale: 1" = 400'