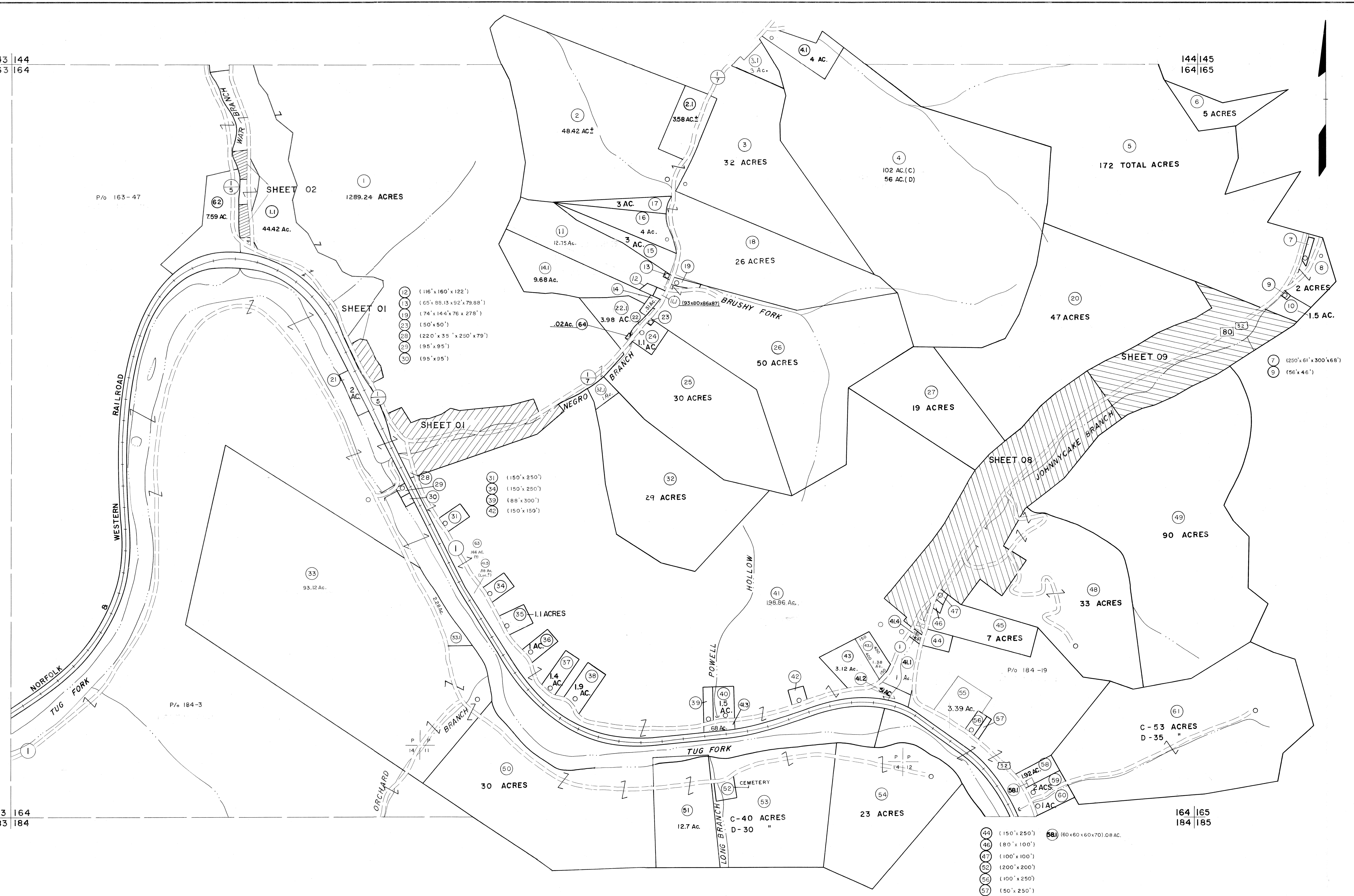


143 | 144
163 | 164

144 | 145
164 | 165

163 | 164
183 | 184

164 | 165
184 | 185

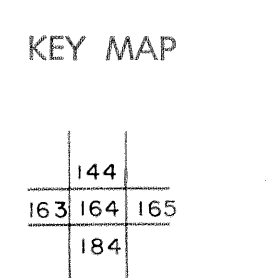


For Tax Purposes Only

Prepared by
MICHAEL BAKER, JR., INC.
Consulting Engineers
Rochester, Pennsylvania

Legend	
Property line	———
Edge of pavement or roadway	———
Corporation line	———
District line	———
County line	———
Original lot line	———
Deed lot number	(15)
Parcel or index number	(22)
Improvement	○
Railroad	———

Revisions	
1	4-15-64
2	12-4-74 T.G.
3	Revised to 7-1-83 S.B.H.
4	7-1-84 L.E.S.
5	July, 1985 T.G.
6	Revised to 7-1-88 S.B.H.
7	Revised to 7-1-89 S.B.H.
8	O.G.I.S. 5-15-95 J.E.B.
9	O.G.I.S. 12-1-96 J.E.B.
10	SLS INC. 6/22/98 DSW
11	SLS INC. 12/29/98 DSW
12	ESI 4/24/01 REK
13	5/24/04 S.B.H.
14	5-15-05 H.F.S.
15	S.B.H. 12/31/05
16	



McDOWELL COUNTY
STATE OF WEST VIRGINIA
Office of Assessor

DISTRICT
SANDY RIVER

SHEET NO: 164

Date, Aerial Photography: April, 1961 Date, Map: July, 1962
Photo No: Scale: 1" = 400'