

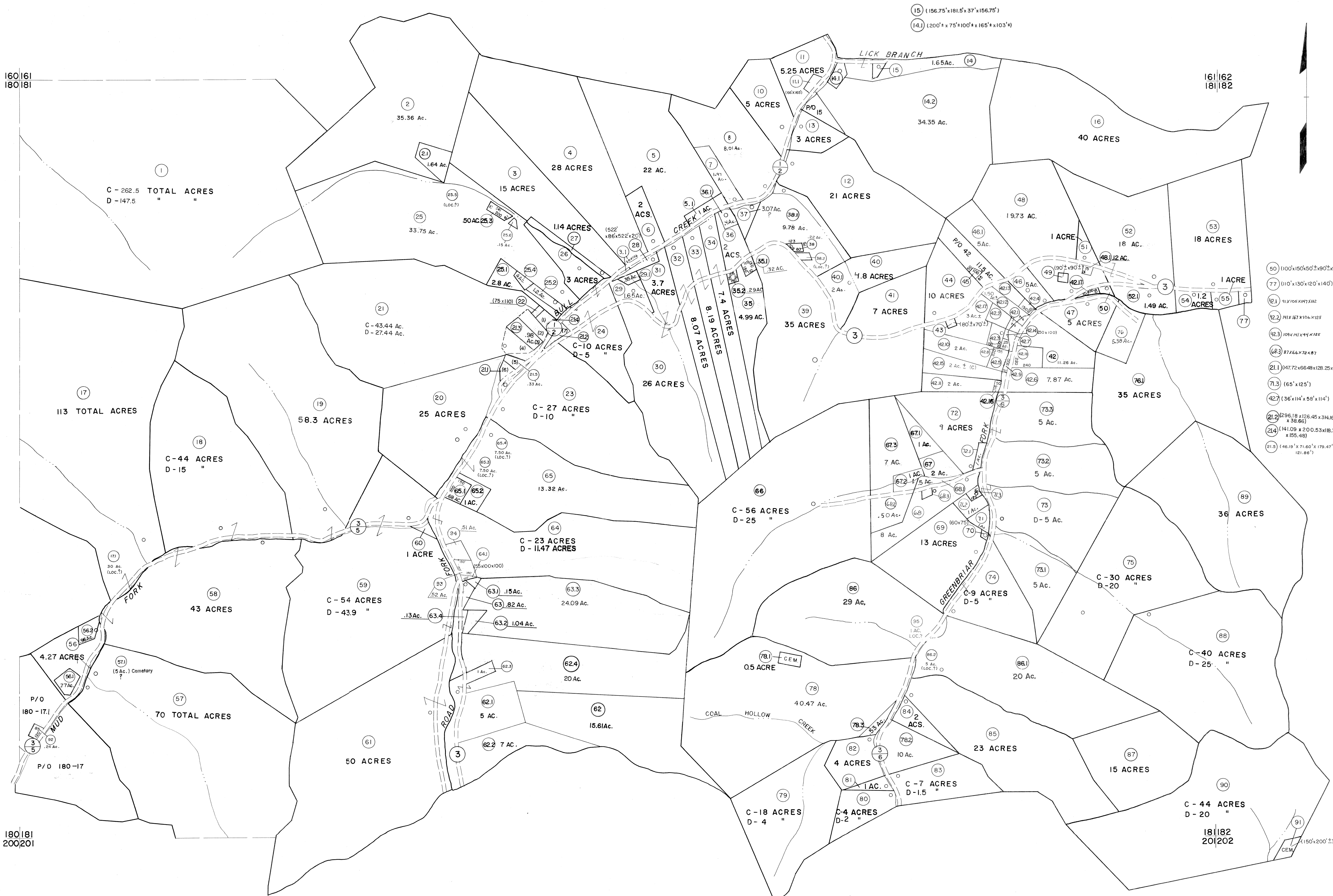
160|161
180|181

(15) (156.75'x181.5'x37'x156.75')
(14) (200'x75'x100'x165'x103')

161|162
181|182

180|181
200|201

181|182
201|202



- (50) (100'x150'x50'x90'x90')
- (77) (110'x130'x120'x140')
- (42.1) 91.5'x105'x117'x122'
- (42.2) 141.5'x114'x104'x125'
- (42.3) 105'x114'x114'x122'
- (48.3) 87.5'x66'x78'x87'
- (21.1) (47.72x66.48x128.25x170.4)
- (71.3) (65'x125')
- (42.7) (36'x114'x59'x114')
- (21.2) (296.18x126.45x34.16x38.66)
- (21.4) (141.09x200.53x18.33x185.48)
- (21.3) (46.19'x71.60'x179.47'x121.86')

For Tax Purposes Only

Prepared by
MICHAEL BAKER, JR., INC.
Consulting Engineers
Rochester, Pennsylvania

Legend

Property line	-----	Original lot line	-----
Edge of pavement or roadway	-----	Deed lot number	(15)
Corporation line	-----	Parcel or index number	(22)
District line	-----	Improvement	O
County line	-----	Railroad	-----

Revisions

1	4-15-64	9	O.G.I.S	12-1-96	J.E.B	17	S&H	8/27/06
2	12-5-74	10	SLS INC.	6/24/98	JWM	18	H&S	6-18-07
3	Revised 7-1-83	11	SLS INC.	12/29/98	DSW	19		
4	7-1-84	12	ESI	4/24/01	REK	20		
5	Revised 6-7-88	13	ESI	12/4/02	REK	21		
6	Revised 6-7-88	14	5/24/04		S&H	22		
7	Revised 7-1-89	15	5-15-05		H&S	23		
8	O.G.I.S	16	5-15-95		J.E.B	16	S&H	12/31/05

KEY MAP



McDOWELL COUNTY
STATE OF WEST VIRGINIA
Office of Assessor

DISTRICT
SANDY RIVER

SHEET NO: 181

Date, Aerial Photography: April, 1961 Date, Map: July, 1962
Photo No: Scale: 1" = 400'