

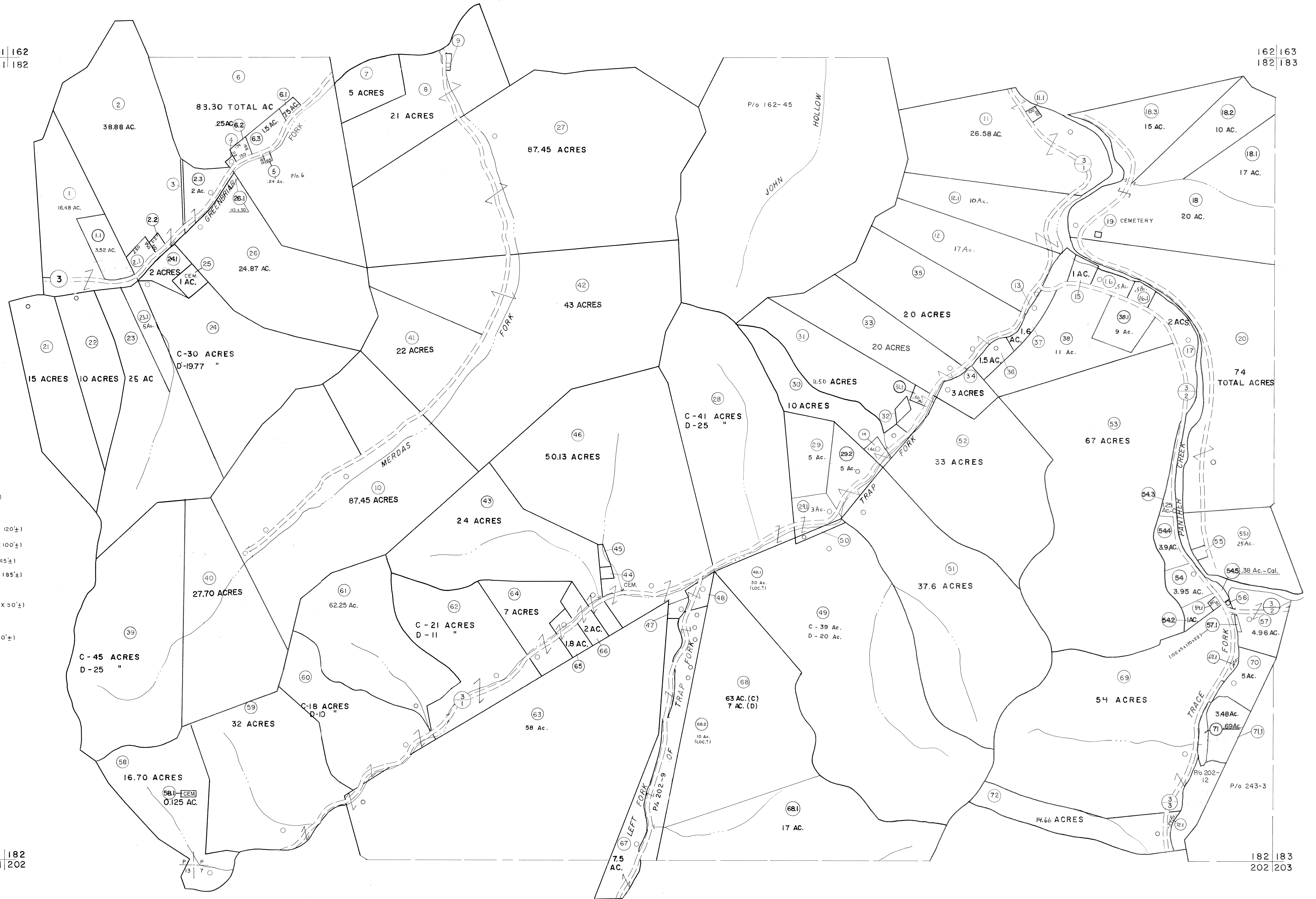
161 | 162
181 | 182

162 | 163
182 | 183

- 3 (10 1/2' X 620')
- 4 (70' X 90' X 100' X 90' ±)
- 5 (65' X 165')
- 9 (148' X 60' X 145' X 60')
- 13 (264' X 62' X 264' X 20' ±)
- 19 (50' X 50')
- 32 (170' ± X 130' ± X 150' ± X 120' ±)
- 44 (100' ± X 120' ± X 100' ± X 100' ±)
- 45 (200' X 100' ± X 200' X 45' ±)
- 47 (215' ± X 100' ± X 120' ± X 185' ±)
- 48 1 ACRE
- 50 (420' ± X 50' ± X 460' ± X 50' ±)
- 55 (100' ± X 80' ±)
- 56 (80' ± X 35' ± X 100' ± X 60' ±)

181 | 182
201 | 202

182 | 183
202 | 203



For Tax Purposes Only

Prepared by
MICHAEL BAKER, JR., INC.
Consulting Engineers
Rochester, Pennsylvania

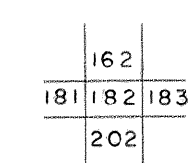
Legend

Property line	-----	Original lot line	-----
Edge of pavement or roadway	-----	Deed lot number	(15)
Corporation line	-----	Parcel or index number	(29)
District line	-----	Improvement	o
County line	-----	Railroad	-----

Revisions

1	4-15-64	9	SLS INC. 12/29/98	DSW	17
2	12-5-74	10	5/24/04	SBH	18
3	Revised 7-1-83	11	6-18-07	++S	19
4	July 1985	12			20
5	Revised 7-1-88	13			21
6	O.G.I.S 5-15-95	14	J.E.B		22
7	SLS INC. 6/24/98	15	J.W.M		23
8		16			24

KEY MAP



McDOWELL COUNTY
STATE OF WEST VIRGINIA
Office of Assessor

DISTRICT

SANDY RIVER

SHEET NO: 182

Date, Aerial Photography: April, 1961 Date, Map: July, 1962
Photo No: Scale: 1" = 400'