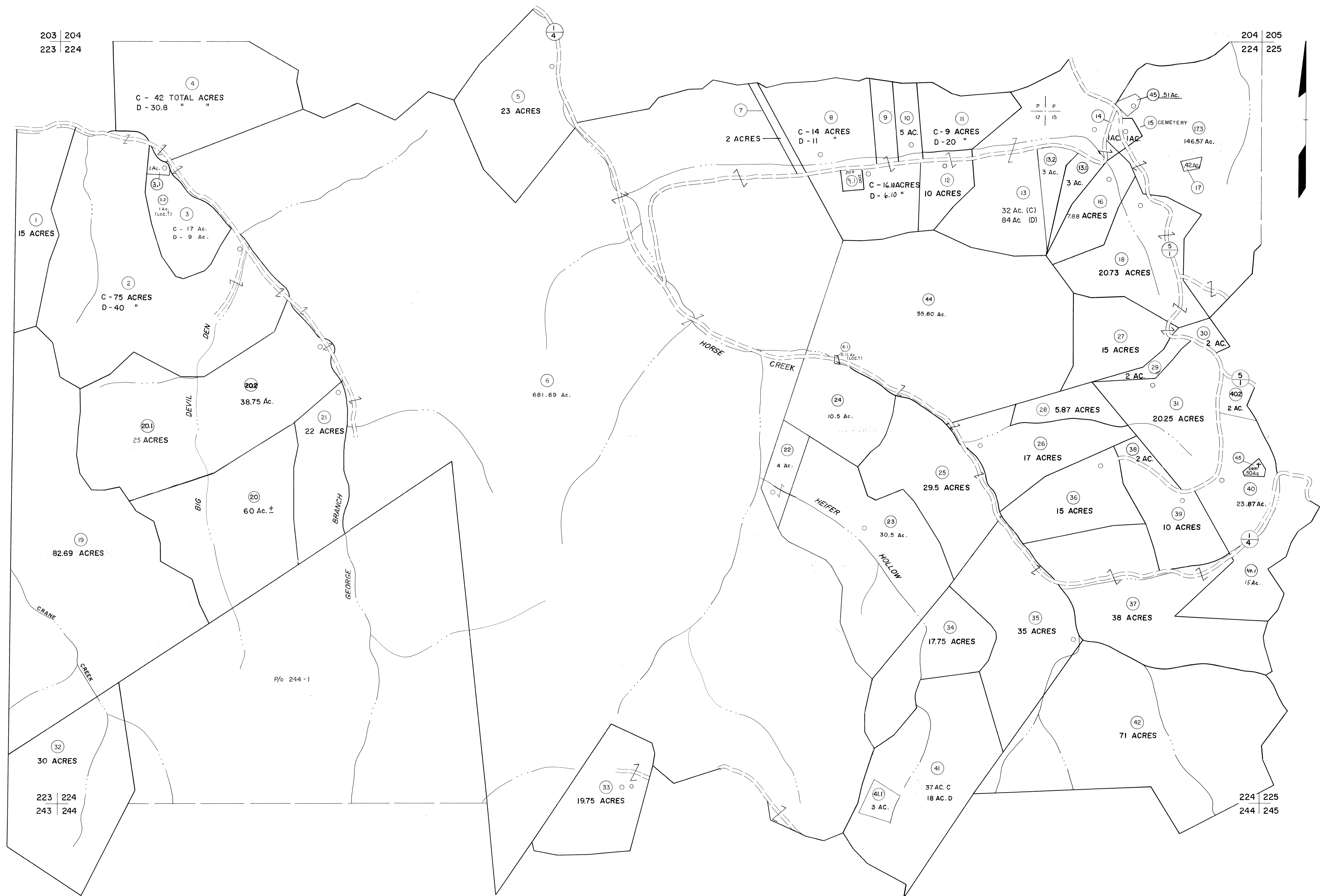


203 | 204  
223 | 224

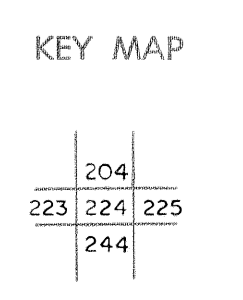
204 | 205  
224 | 225



**For Tax Purposes Only**  
 Prepared by  
**MICHAEL BAKER, JR., INC.**  
 Consulting Engineers  
 Rochester, Pennsylvania

Legend	
Property line	Original lot line
Edge of pavement or roadway	Deed lot number (15)
Corporation line	Parcel or index number (29)
District line	Improvement (0)
County line	Railroad

Revisions	
1 4-15-64	9 SLS INC. 12/30/98 DSW 17
2 12-6-74 T.G.	10 ESI 4/24/01 REK 18
3 Revised to 7-1-83 S.H.	11 5/23/04 S.B.H. 19
4 7-1-84 L.E.S.	12 5-15-05 V.E.S. 20
5 July 1988 H.L.	13 8/27/06 S.B.H. 21
6 Revised to 7-1-88 S.H.	14 22
7 Revised to 7-1-89 S.H.	15 23
8 O.G.I.S. 5-15-95 J.E.B.	16 24



**McDOWELL COUNTY**  
 STATE OF WEST VIRGINIA  
 Office of Assessor

DISTRICT  
**SANDY RIVER**  
 SHEET NO: 224  
 Date, Aerial Photography: April, 1961 Date, Map: July, 1962  
 Photo No: Scale: 1" = 400'