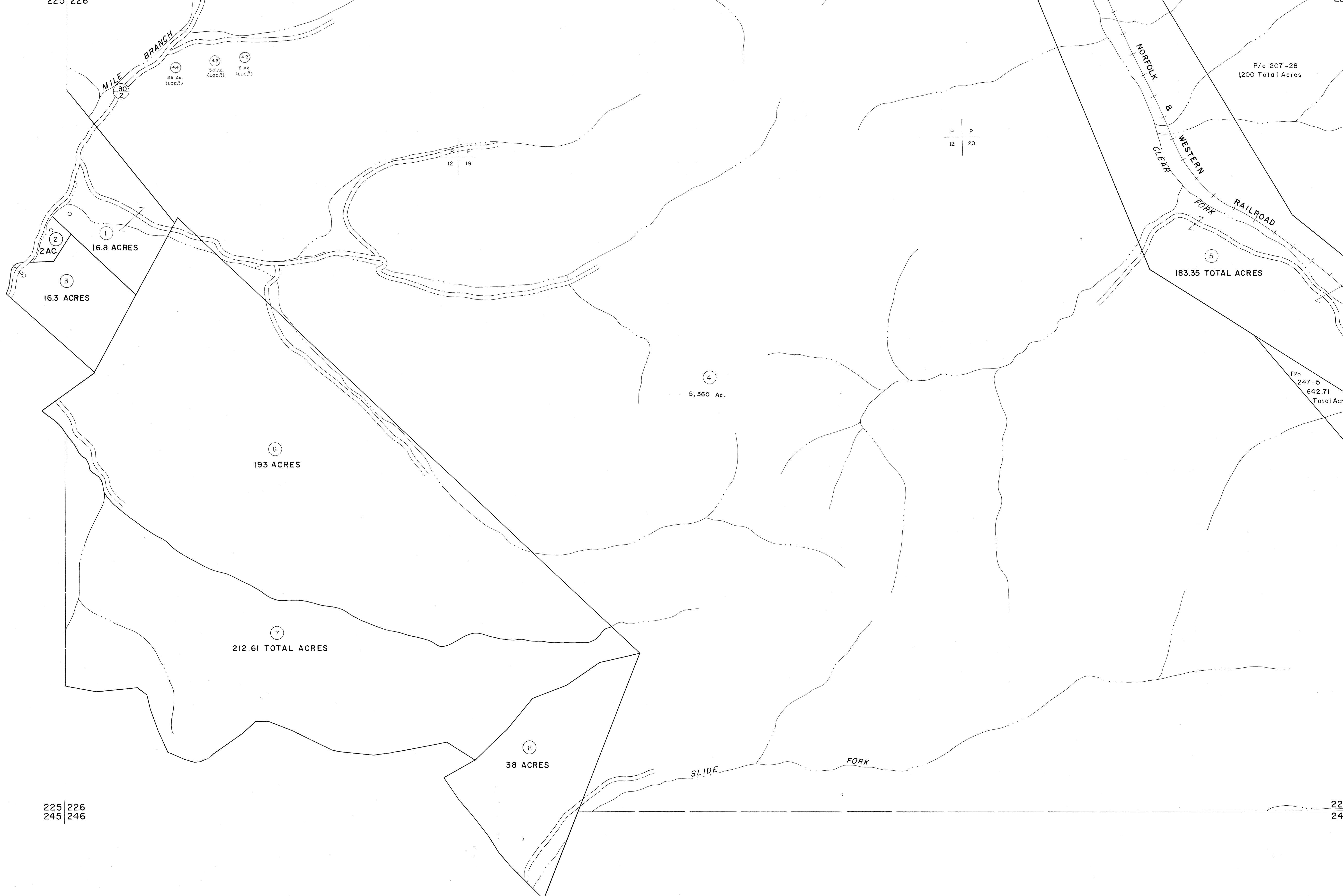


205 206  
225 226

206 207  
226 227



225 226  
245 246

226 227  
246 247

**For Tax Purposes Only**

Prepared by  
**MICHAEL BAKER, JR., INC.**  
Consulting Engineers  
Rochester, Pennsylvania

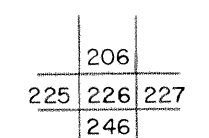
**Legend**

|                             |       |                        |       |
|-----------------------------|-------|------------------------|-------|
| Property line               | ————— | Original lot line      | ----- |
| Edge of pavement or roadway | ----- | Deed lot number        | (15)  |
| Corporation line            | ----- | Parcel or index number | (22)  |
| District line               | ----- | Improvement            | o     |
| County line                 | ----- | Railroad               | —+—   |

**Revisions**

|   |                         |    |    |
|---|-------------------------|----|----|
| 1 | 4-15-64                 | 9  | 17 |
| 2 | 12-9-74                 | 10 | 18 |
| 3 | Revised to 7-1-83       | 11 | 19 |
| 4 | O.G.I.S. 5-15-95 J.E.B. | 12 | 20 |
| 5 |                         | 13 | 21 |
| 6 |                         | 14 | 22 |
| 7 |                         | 15 | 23 |
| 8 |                         | 16 | 24 |

**KEY MAP**



**McDOWELL COUNTY**  
STATE OF WEST VIRGINIA  
Office of Assessor

DISTRICT  
**SANDY RIVER**

**SHEET NO: 226**

Date, Aerial Photography: April, 1961  
Photo No: \_\_\_\_\_  
Date, Map: July, 1962  
Scale: 1" = 400'