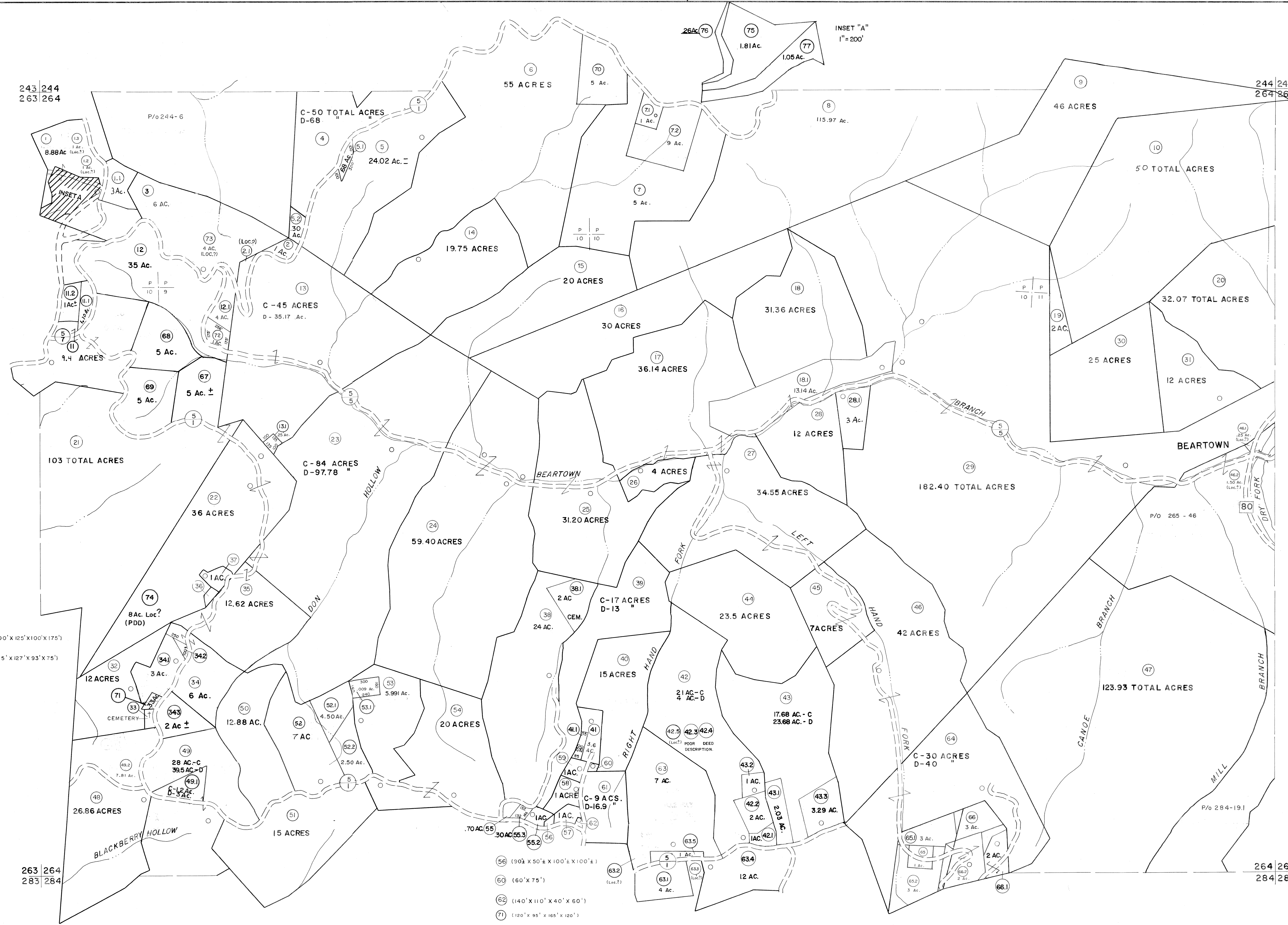


243 244  
263 264

244 245  
264 265



- 33 (100' X 125' X 100' X 175')
- 36 (175' X 127' X 93' X 75')

263 264  
283 284

264 265  
284 285

For Tax Purposes Only  
Prepared by  
**MICHAEL BAKER, JR., INC.**  
Consulting Engineers  
Rochester, Pennsylvania

Legend	
Property line	—
Edge of pavement or roadway	—
Corporation line	—
District line	—
County line	—
Original lot line	—
Deed lot number	(15)
Parcel or index number	(99)
Improvement	○
Railroad	—

Revisions			
1	4-15-64		
2	12-10-74	T.G.	
3	Revised to 7-1-83	J.F.	
4	July 1985	J.F.	
5	Revised to 7-1-85	J.F.	
6	Revised to 7-1-85	J.F.	
7	O.G.I.S 12-1-96	J.E.B.	
8	SLS INC. 6/25/98	J.W.M.	
9	SLS INC. 12/30/98	D.S.W.	
10	5/23/04	S.B.H.	
11	5-15-05	H.A.S.	
12	C-18-07	H.A.S.	
13			
14			
15			
16			
17			
18			
19			
20			
21			
22			
23			
24			

KEY MAP  
244  
263 264 265  
284

**McDOWELL COUNTY**  
STATE OF WEST VIRGINIA  
Office of Assessor

DISTRICT  
**SANDY RIVER**  
SHEET NO: 264  
Date, Aerial Photography: April, 1961 Date, Map: July, 1962  
Photo No: Scale: 1" = 400'