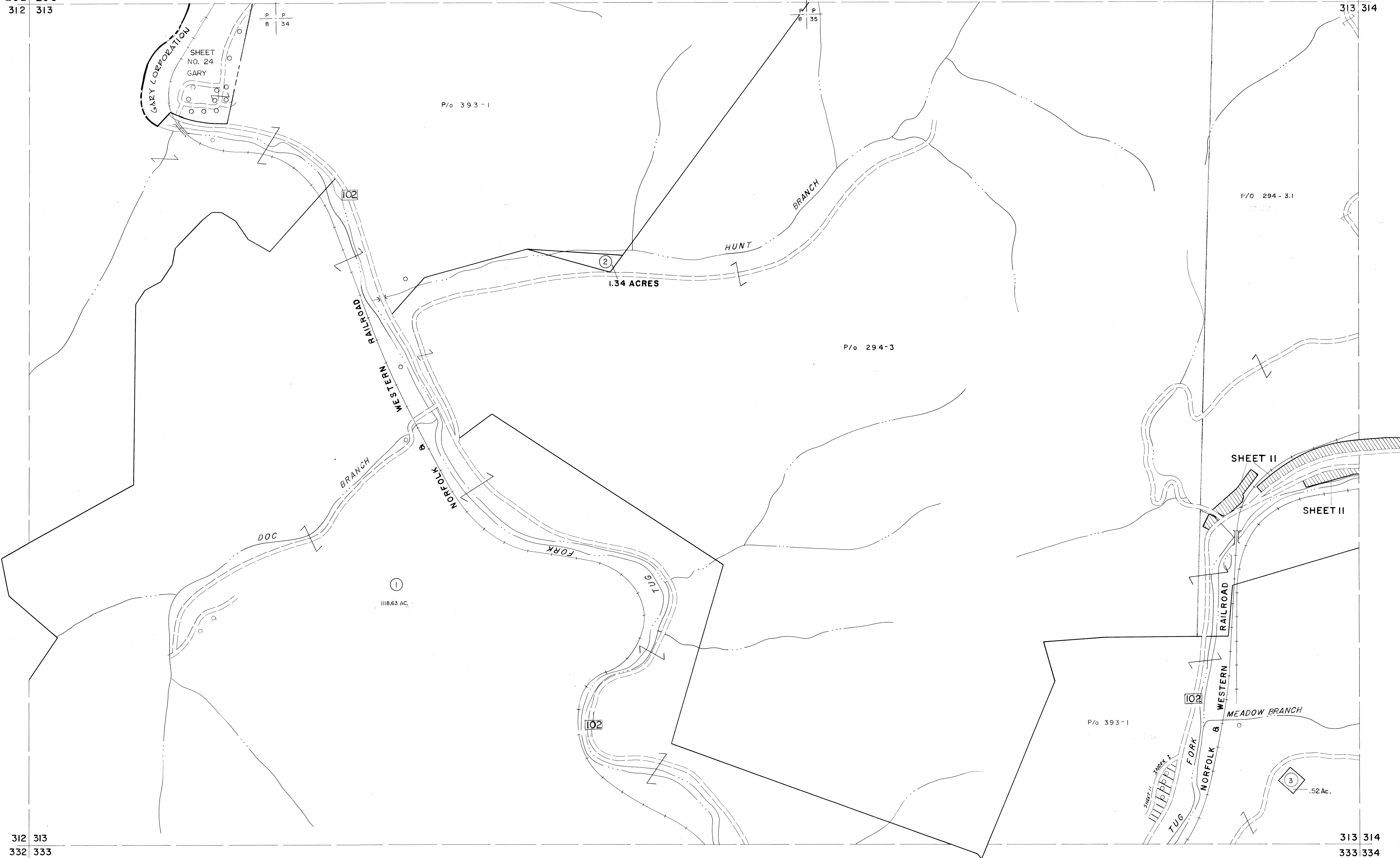


292 293
312 313

293 294
313 314



312 313
332 333

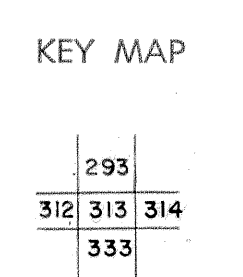
313 314
333 334

For Tax Purposes Only

Prepared by
MICHAEL BAKER, JR., INC.
 Consulting Engineers
 Rochester, Pennsylvania

Legend	
Property line	—
Edge of pavement or roadway	- - - -
Corporation line	- · - · -
District line	- - - - -
County line	- - - - -
Original lot line	- · - · -
Deed lot number	(15)
Parcel or index number	(29)
Improvement	○
Railroad	—+—+—+—

Revisions			
1	4-15-64	9	ESI 12/5/02 REK
2	4-19-72 J.M.	10	
3	12-5-74 DAE	11	
4	7-1-83 L.E.S.	12	
5	10-1-85 J.E.B.	13	
6	Q.G.I.S. 5-15-95 J.E.B.	14	
7	Q.G.I.S. 12-1-96 J.E.B.	15	
8	SLS INC. 6/26/98 J.W.M.	16	



MCDOWELL COUNTY
 STATE OF WEST VIRGINIA
 Office of Assessor

DISTRICT **ADKIN**

SHEET NO: **313**

Date, Aerial Photography: April, 1961 Date, Map: July, 1962
 Photo No: Scale: 1" = 400'