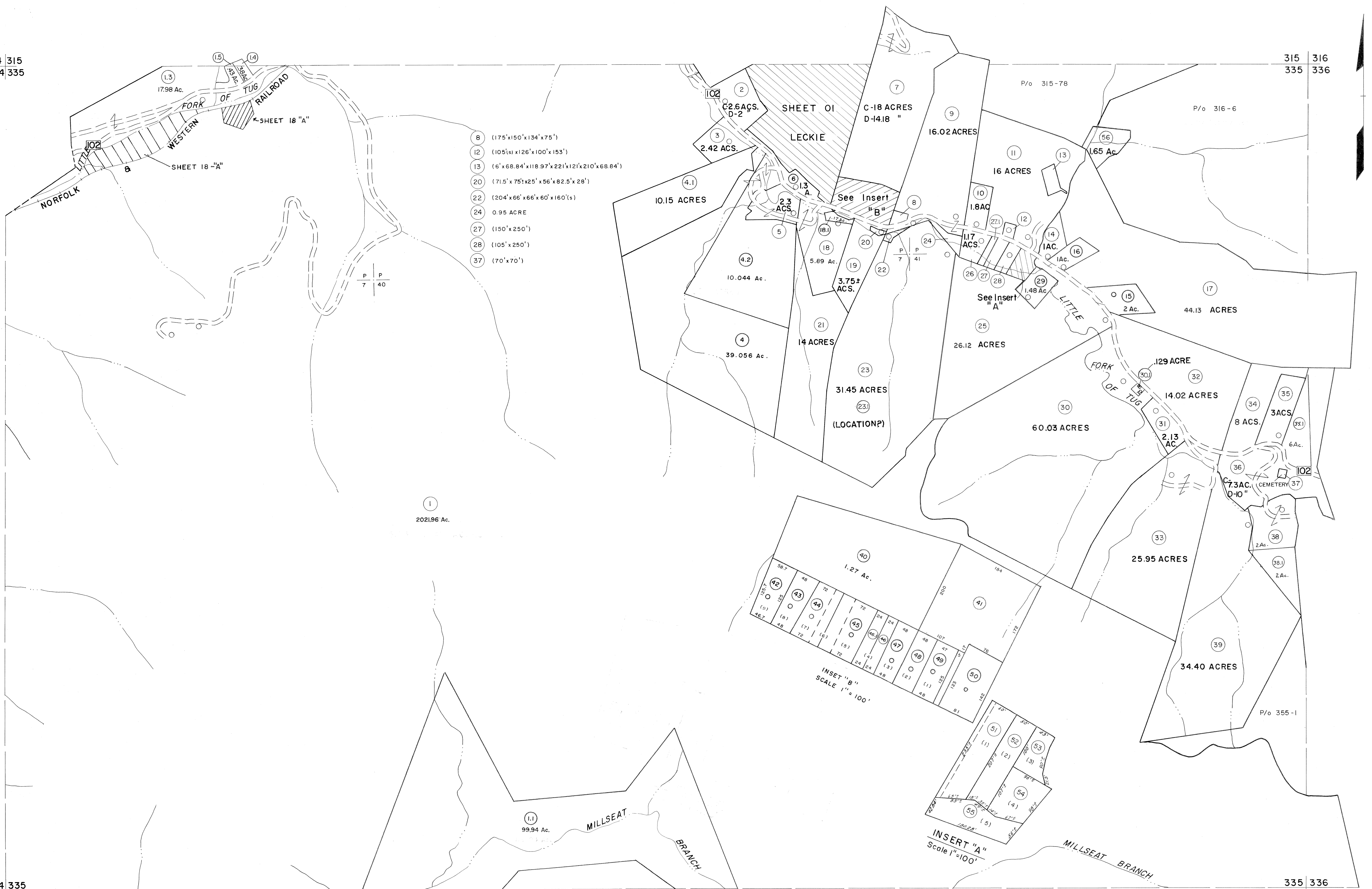


314 315
334 335

315 316
335 336

334 335
354 355

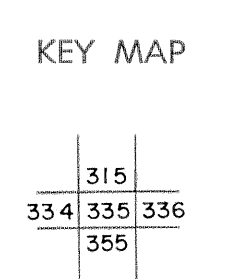
335 336
355 356



For Tax Purposes Only
 Prepared by
MICHAEL BAKER, JR., INC.
 Consulting Engineers
 Rochester, Pennsylvania

Legend	
Property line	Original lot line
Edge of pavement or roadway	Deed lot number
Corporation line	Parcel or index number
District line	Improvement
County line	Railroad

Revisions			
1	4-15-64	9	S&H 12/31/05
2	(2-9-74) OAE	10	S&H 8/25/06
3	REV. TO 7-1-83 NCS	11	H&S 6-18-07
4	July 1985 JEC	12	
5	O.G.I.S 5-15-95 J.E.B	13	
6	SLS INC. 1/4/99 DSW	14	
7	ESI 12/5/02 REK	15	
8	5/23/04 S&H	16	



McDOWELL COUNTY
 STATE OF WEST VIRGINIA
 Office of Assessor

DISTRICT	ADKIN
SHEET NO:	335
Date, Aerial Photography:	April, 1961
Photo No:	
Date, Map:	July, 1962
Scale:	1" = 400'