

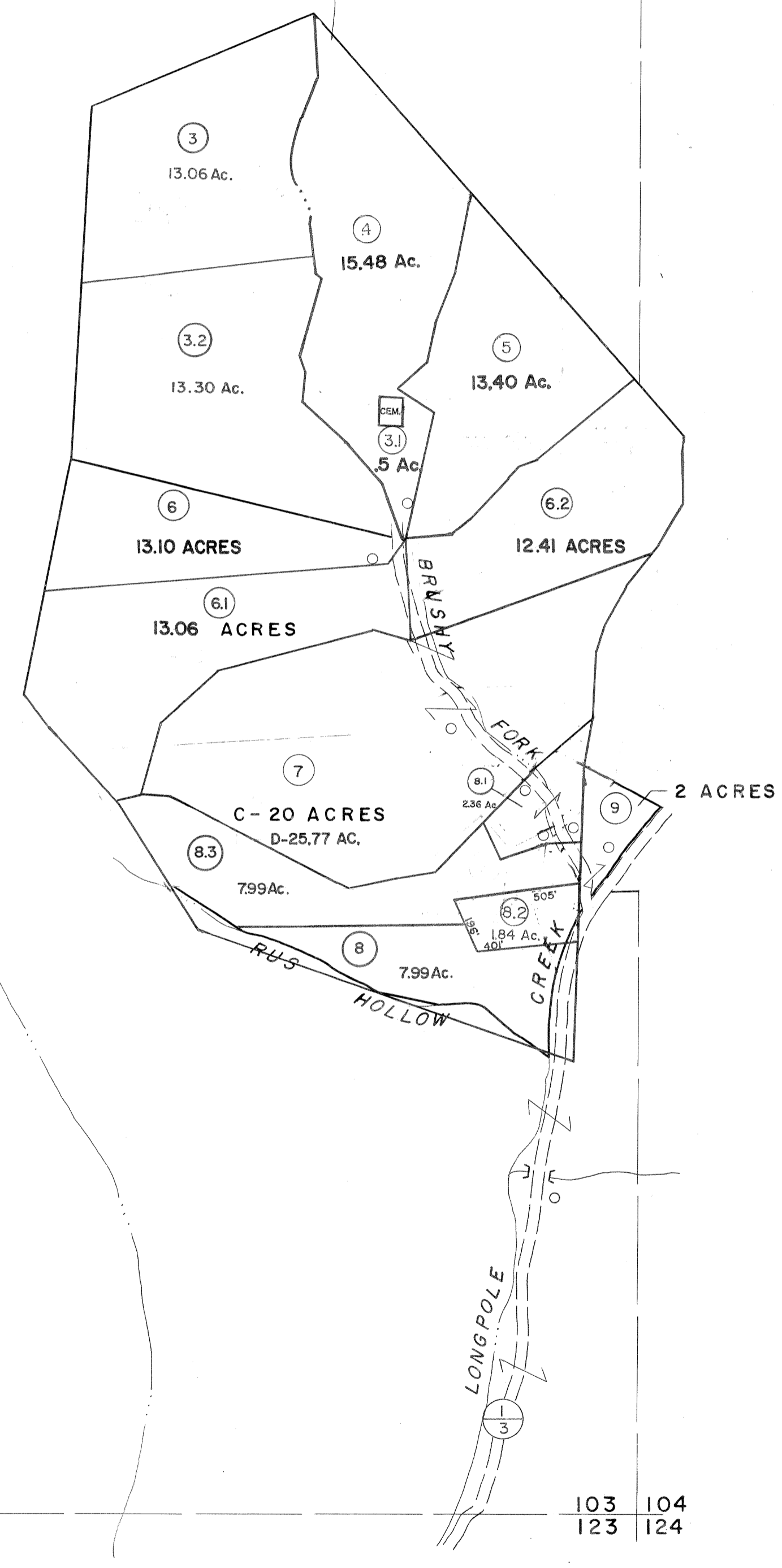
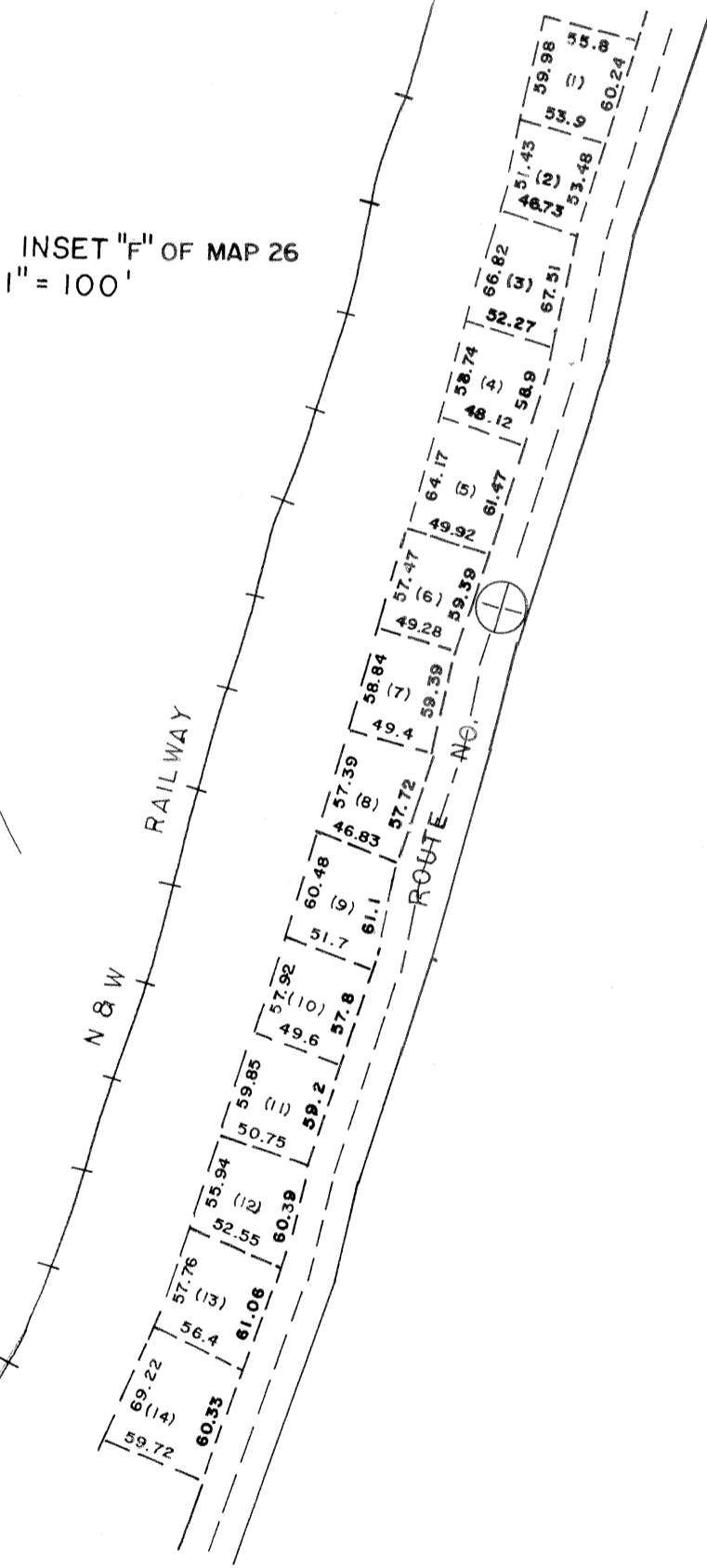
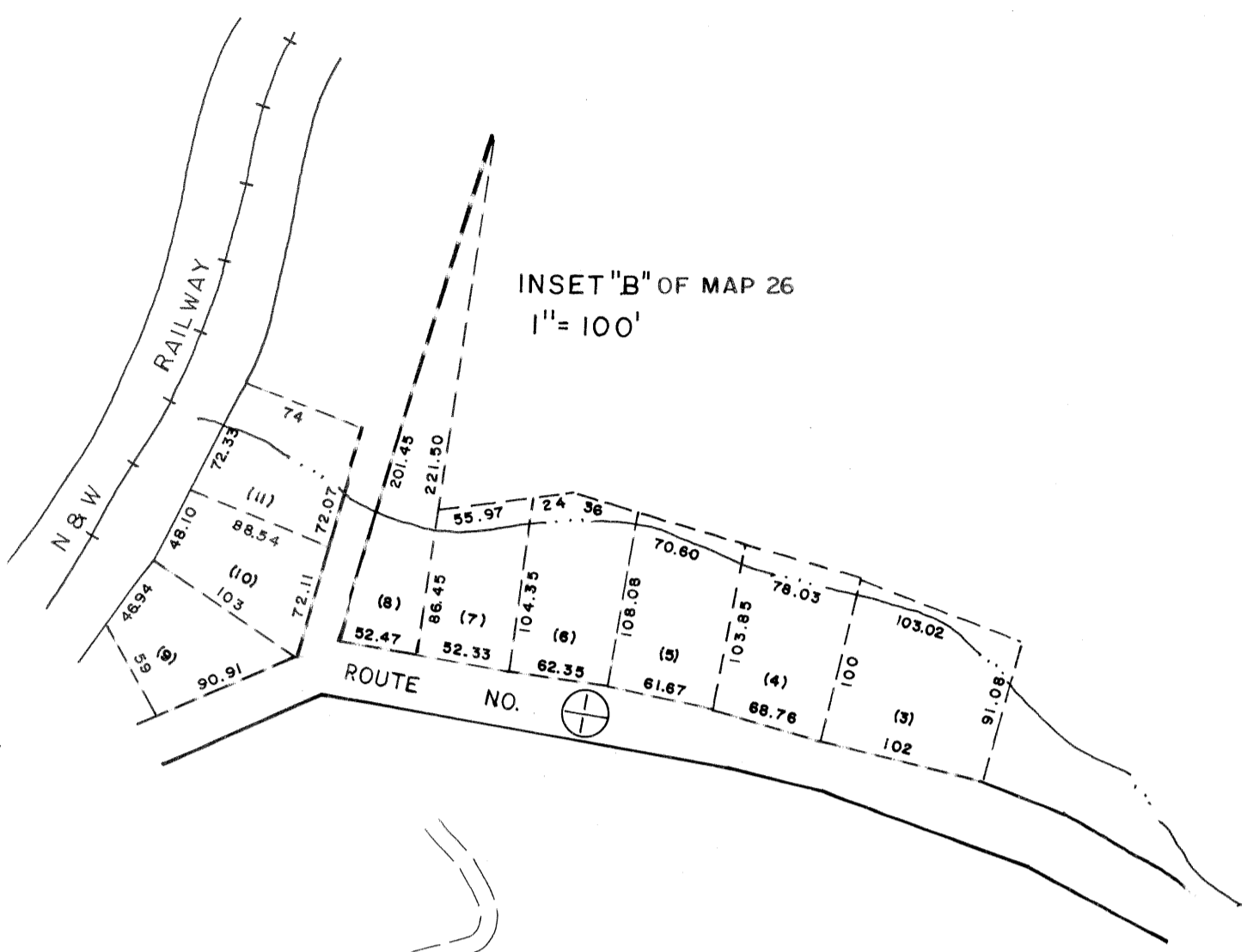
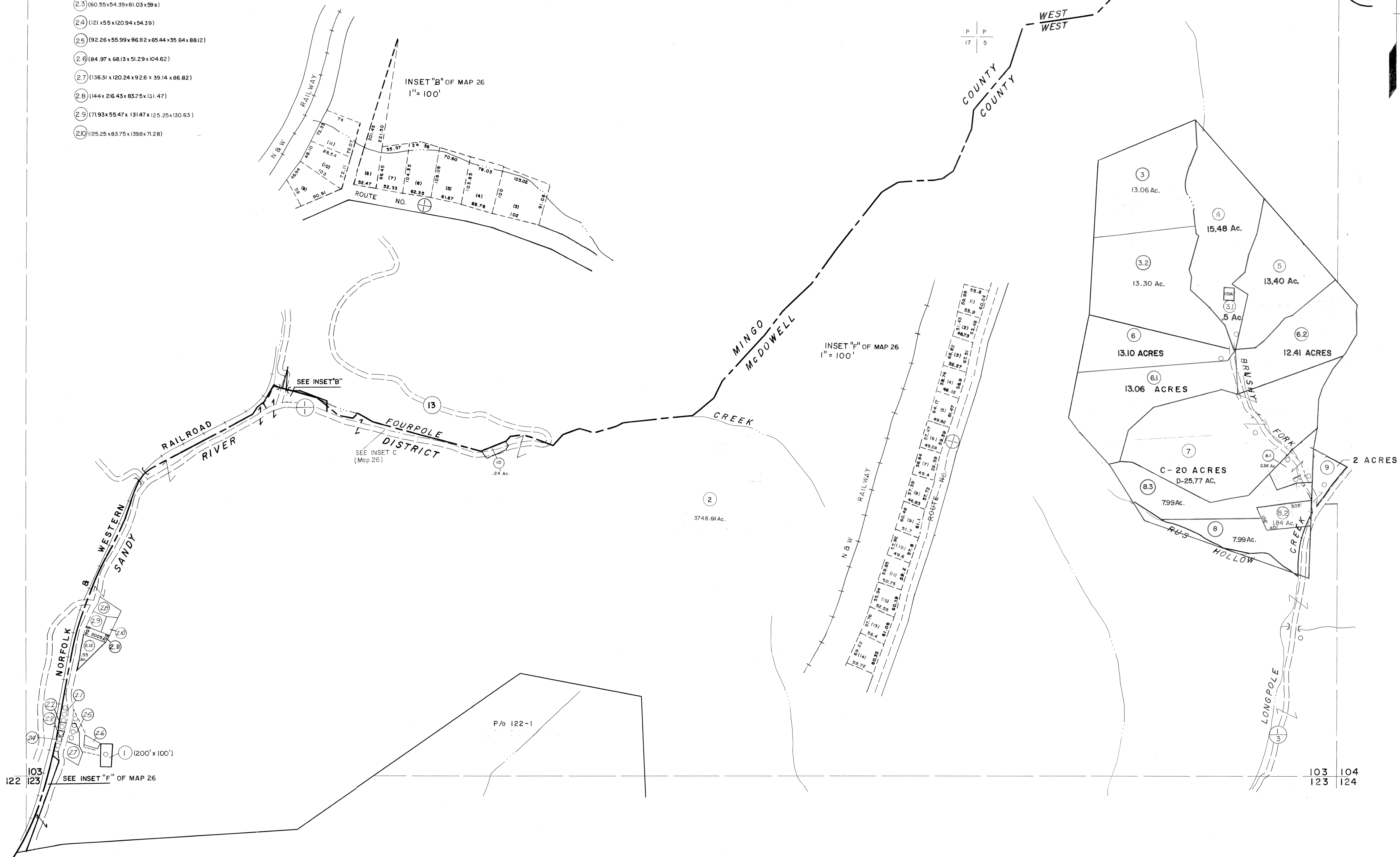
103

- (2.1) 235.99 x 60.78 x 245.99 x 10.85
- (2.2) 62.27 x 59.5 x 62.39 x 60.78
- (2.3) 60.55 x 54.39 x 61.03 x 59.5
- (2.4) 121 x 55 x 120.94 x 54.39
- (2.5) 92.26 x 55.99 x 86.82 x 65.44 x 35.64 x 88.12
- (2.6) 84.97 x 68.13 x 51.29 x 104.62
- (2.7) 136.31 x 120.24 x 92.6 x 39.14 x 86.82
- (2.8) 144 x 216.43 x 83.75 x 131.47
- (2.9) 171.93 x 55.47 x 131.47 x 125.25 x 130.63
- (2.10) 125.25 x 83.75 x 139.8 x 71.28

P P  
17 4

P P  
17 5

103 104



122 103 123 SEE INSET "F" OF MAP 26

103 104  
123 124

For Tax Purposes Only

Prepared by  
MICHAEL BAKER, JR., INC.  
Consulting Engineers  
Rochester, Pennsylvania

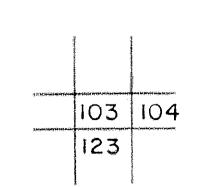
Legend

Property line	—	Original lot line	—
Edge of pavement or roadway	—	Deed lot number	(15)
Corporation line	—	Parcel or index number	(22)
District line	—	Improvement	o
County line	—	Railroad	—

Revisions

1	4-15-64	9	5-15-05 HES	17
2	Revised to 7-1-85	10	8/27/06 SAH	18
3	Revised to 7-1-85	11	6-18-07 HES	19
4	Revised to 7-1-85	12		20
5	O.G.I.S 5-15-95 J.E.B	13		21
6	O.G.I.S 12-1-96 J.E.B	14		22
7	SLS INC. 6/22/98 DSW	15		23
8	ESI 4/19/01 REK	16		24

KEY MAP



McDOWELL COUNTY

STATE OF WEST VIRGINIA

Office of Assessor

DISTRICT

SANDY RIVER

SHEET NO: 103

Date, Aerial Photography: April, 1961 Date, Map: July, 1962  
Photo No: Scale: 1" = 400'