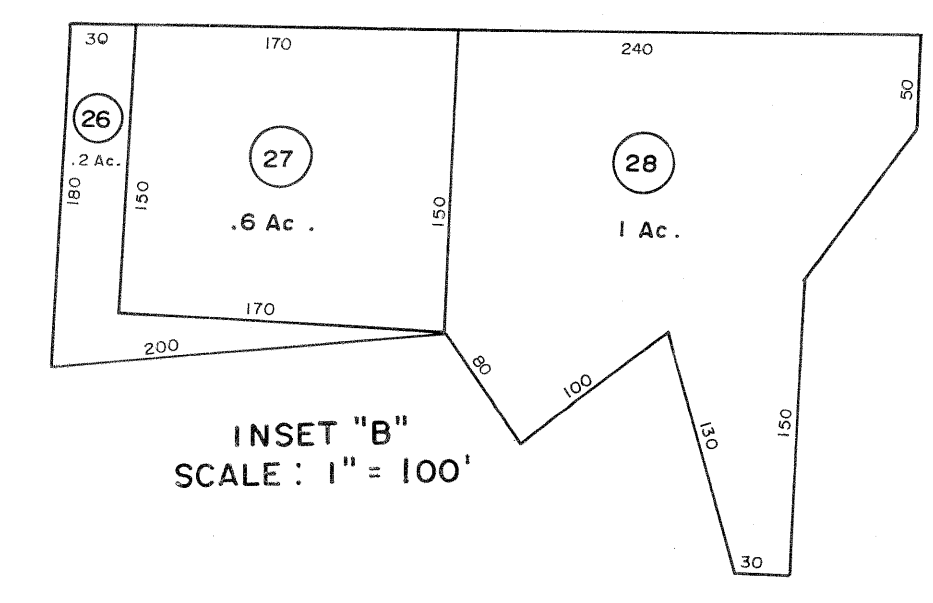
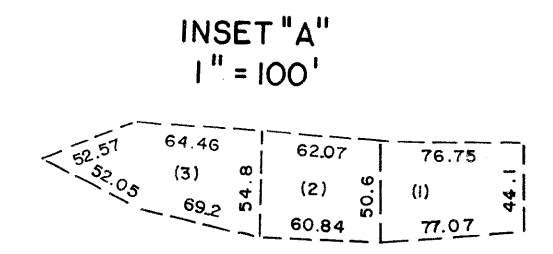
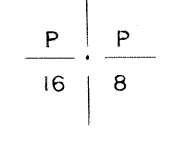
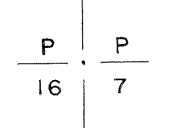
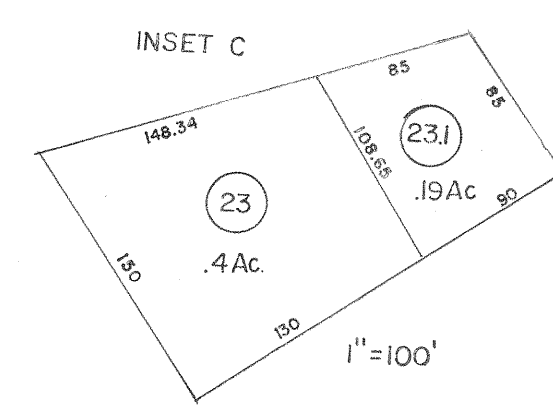


122

103  
122 123

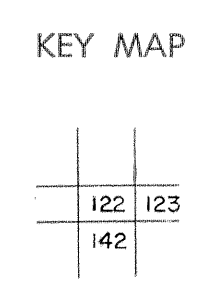


For Tax Purposes Only

Prepared by  
MICHAEL BAKER, JR., INC.  
Consulting Engineers  
Rochester, Pennsylvania

| Legend                      |                        |
|-----------------------------|------------------------|
| Property line               | Original lot line      |
| Edge of pavement or roadway | Deed lot number        |
| Corporation line            | Parcel or index number |
| District line               | Improvement            |
| County line                 | Railroad               |

| Revisions |                   |    |             |
|-----------|-------------------|----|-------------|
| 1         | 4-15-64           | 9  | 8/27/06 S&H |
| 2         | Revised to 7-1-83 | 10 |             |
| 3         | July 18 1983      | 11 |             |
| 4         | Revised to 7-1-86 | 12 |             |
| 5         | O.G.I.S 12-1-96   | 13 | J.E.B       |
| 6         | SLS INC. 6/22/98  | 14 | DSW         |
| 7         | SLS INC. 12/29/98 | 15 | DSW         |
| 8         | 5/24/04           | 16 | S&H         |



**McDOWELL COUNTY**  
STATE OF WEST VIRGINIA  
Office of Assessor

DISTRICT  
**SANDY RIVER**  
SHEET NO: 122  
Date, Aerial Photography: April, 1961 Date, Map: July, 1962  
Photo No: Scale: 1" = 400'