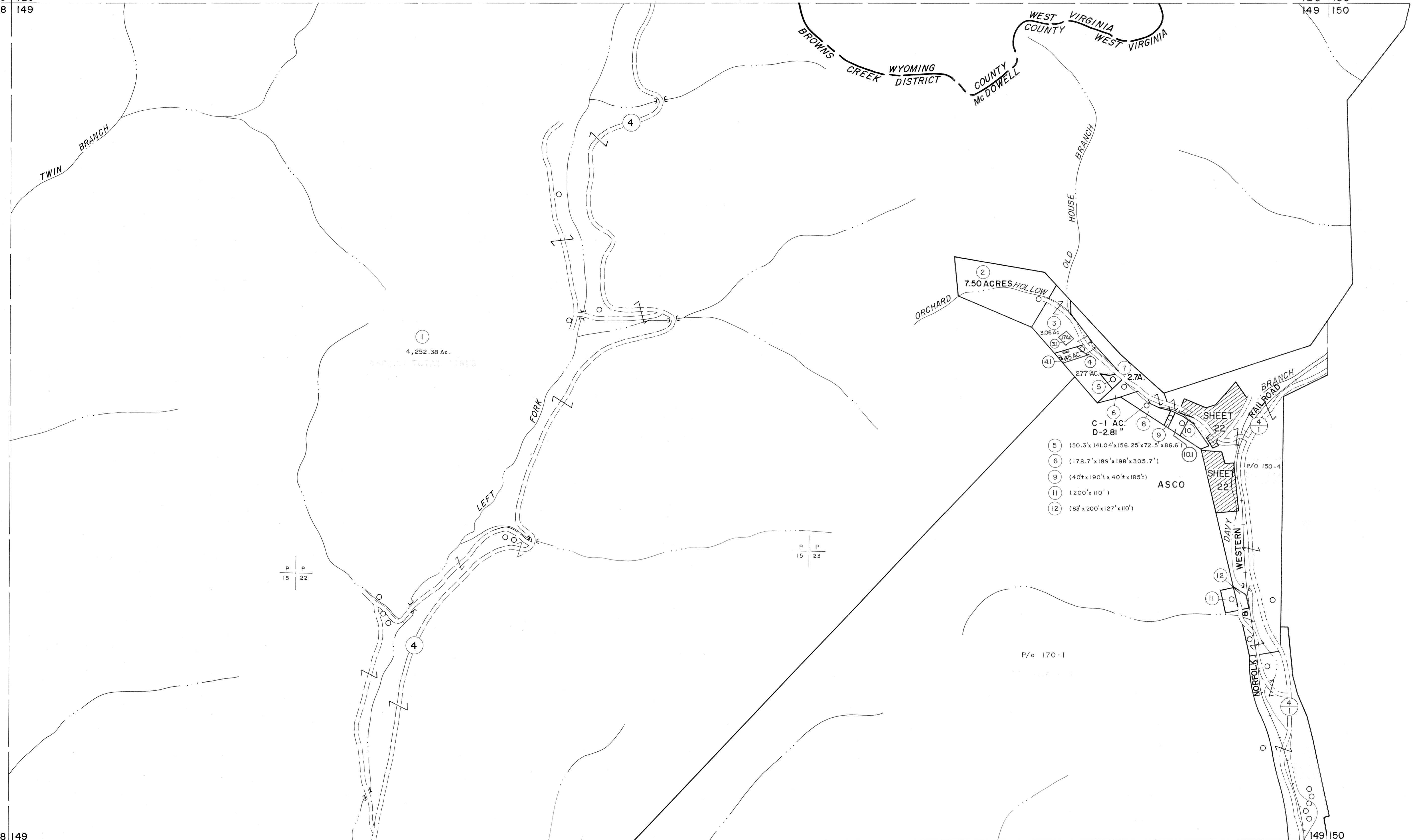


128 129
148 149

129 130
149 150

148 149
168 169

149 150
169 170



- 5 (50.3' x 141.04' x 156.25' x 72.5' x 86.6')
- 6 (178.7' x 189' x 198' x 305.7')
- 9 (40' x 190' x 40' x 185')
- 11 (200' x 110')
- 12 (85' x 200' x 127' x 110')

P P
15 22

P P
15 23

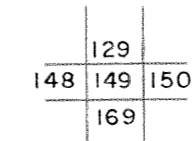
Legend

Property line	—	Original lot line	—
Edge of pavement or roadway	—	Deed lot number	159
Corporation line	—	Parcel or index number	159
District line	—	Improvement	○
County line	—	Railroad	—

Revisions

1	4-15-64	9	17
2	12-3-74	10	18
3	Revised 7-1-83	11	19
4	July 1985	12	20
5	O.G.'S 12-1-96	13	21
6	H.S. 5-15-05	14	22
7	2-1-10	15	23
8		16	24

KEY MAP



For Tax Purposes Only

Prepared by
MICHAEL BAKER, JR., INC.
Consulting Engineers
Rochester, Pennsylvania

McDOWELL COUNTY
STATE OF WEST VIRGINIA
Office of Assessor

DISTRICT

BROWNS CREEK

SHEET NO: 149

Date, Aerial Photography: April, 1961 Date, Map: July, 1962
Photo No: Scale: 1" = 400'