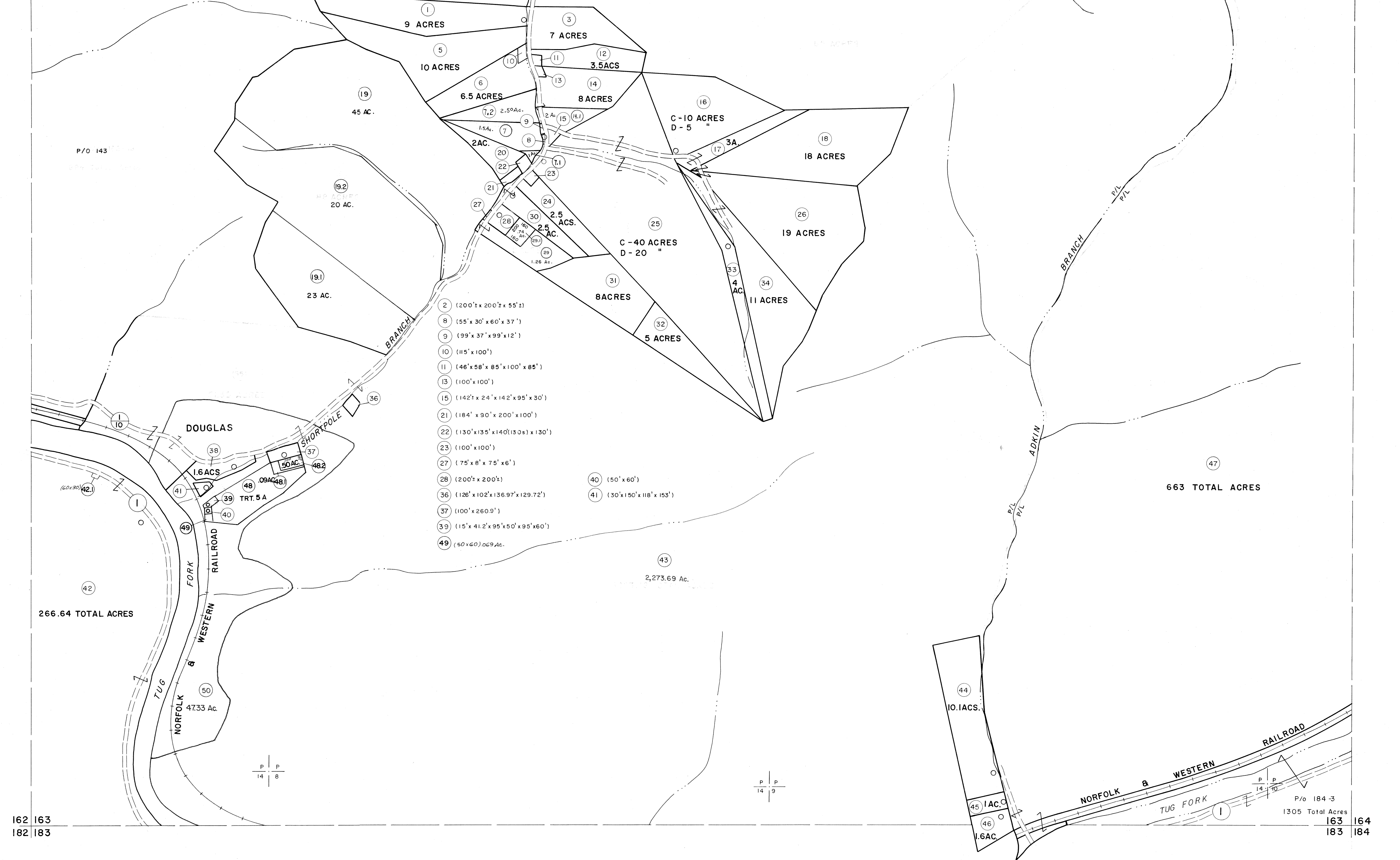


142 143
162 163

143 144
163 164



162 163
182 183

163 164
183 184

For Tax Purposes Only

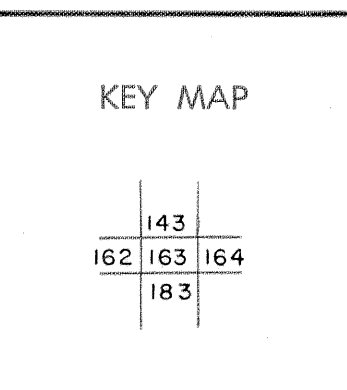
Prepared by
MICHAEL BAKER, JR., INC.
Consulting Engineers
Rochester, Pennsylvania

Legend

Property line	—	Original lot line	—
Edge of pavement or roadway	—	Deed lot number	(15)
Corporation line	—	Parcel or index number	(29)
District line	—	Improvement	○
County line	—	Railroad	—

Revisions

1	4-15-64	9		17	
2	12-4-74	10		18	
3	Revised to 7-1-63	11		19	
4	July 1966	12		20	
5	O.G.I.S 5-15-95	13	J.E.B	21	
6	ESI 12/4/02	14	REK	22	
7	5/24/04	15	S.B.H	23	
8		16		24	



McDOWELL COUNTY
STATE OF WEST VIRGINIA
Office of Assessor

DISTRICT
SANDY RIVER
SHEET NO: 163
Date, Aerial Photography: April, 1961 Date, Map: July, 1962
Photo No: Scale: 1" = 400'