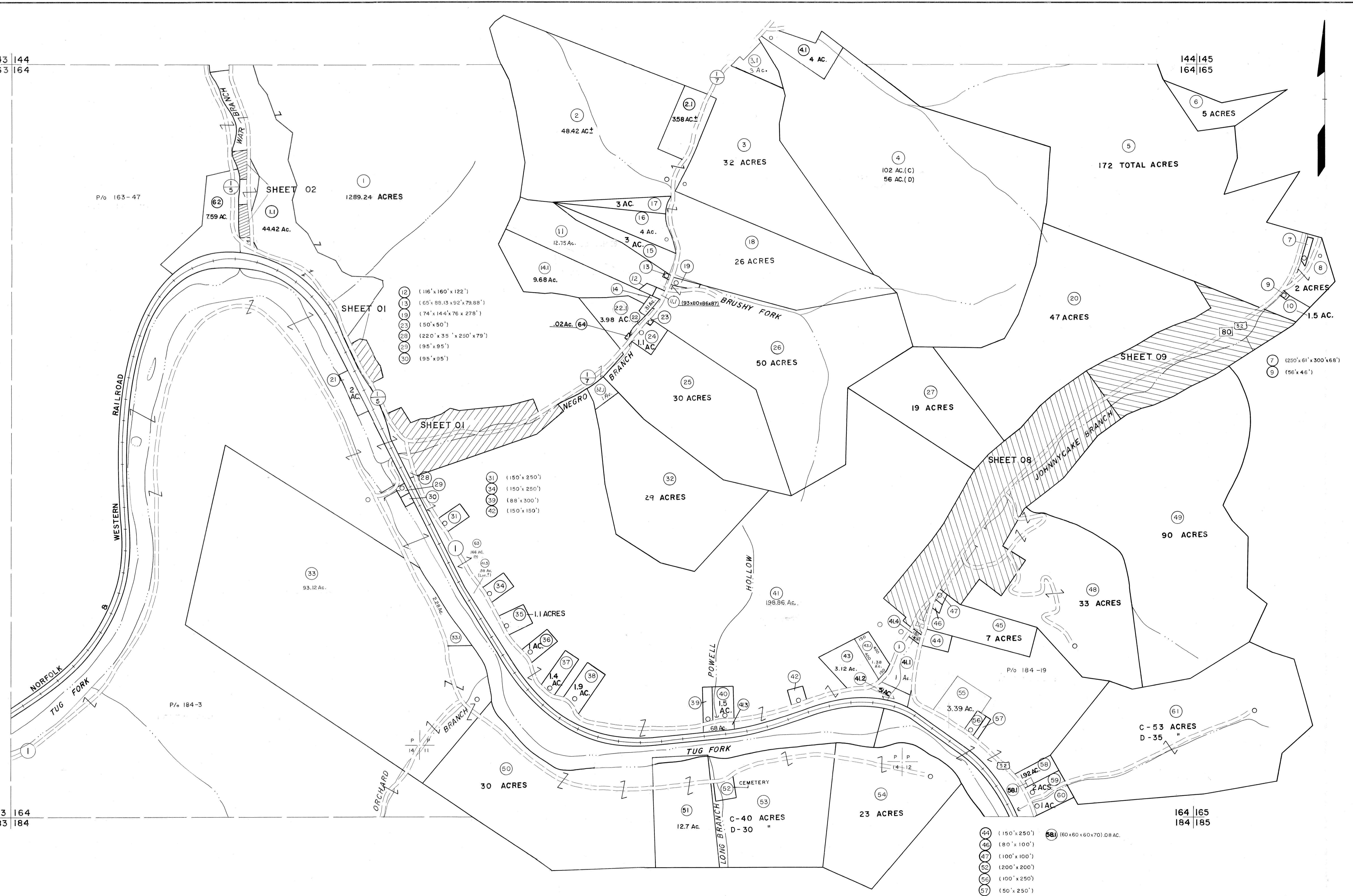


143 144
163 164

144 145
164 165

163 164
183 184

164 165
184 185



For Tax Purposes Only

Prepared by
MICHAEL BAKER, JR., INC.
Consulting Engineers
Rochester, Pennsylvania

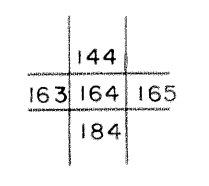
Legend

Property line	—	Original lot line	---
Edge of pavement or roadway	—	Deed lot number	(15)
Corporation line	---	Parcel or index number	(22)
District line	---	Improvement	o
County line	---	Railroad	—

Revisions

1	4-15-64	9	O.G.I.S	12-1-96	J.E.B	17
2	12-4-74	10	SLS INC.	6/22/98	DSW	18
3	Revised to 7-1-83	11	SLS INC.	12/29/98	DSW	19
4	7-1-84	12	ESI	4/24/01	REK	20
5	July, 1988	13	5/24/04		SBH	21
6	Revised to 7-1-88	14	5-15-05	H+S		22
7	Revised to 7-1-89	15	SBH	12/31/05		23
8	O.G.I.S	16	5-15-96	J.E.B		24

KEY MAP



McDOWELL COUNTY
STATE OF WEST VIRGINIA
Office of Assessor

DISTRICT
SANDY RIVER

SHEET NO: 164

Date, Aerial Photography: April, 1961 Date, Map: July, 1962
Photo No: Scale: 1" = 400'