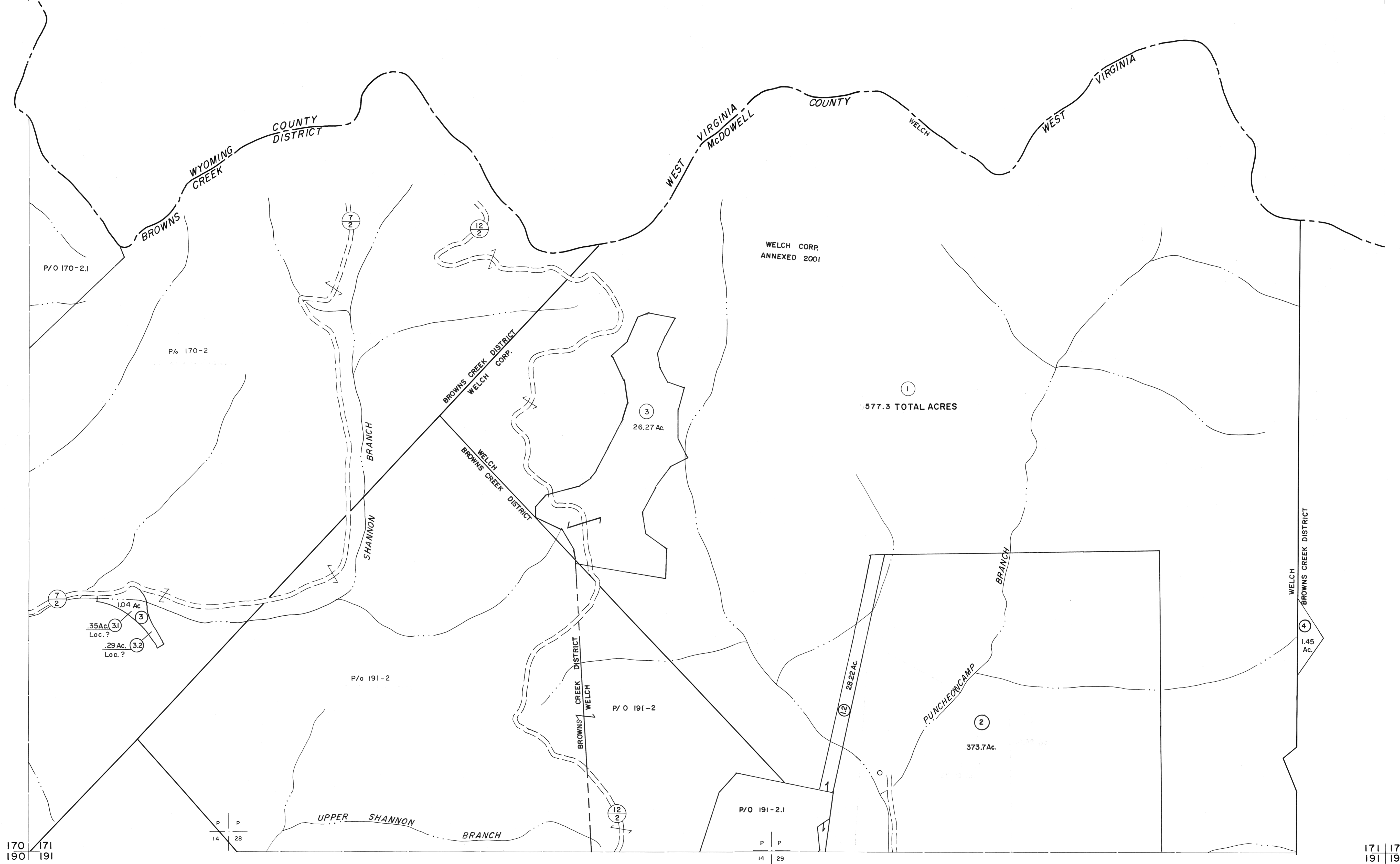


150
170 | 171

171 | 172

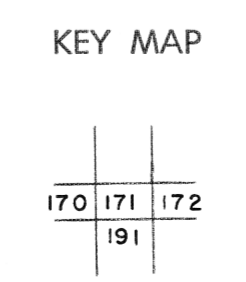


For Tax Purposes Only

Prepared by
MICHAEL BAKER, JR., INC.
Consulting Engineers
Rochester, Pennsylvania

| Legend | |
|-----------------------------|------------------------|
| Property line | Original lot line |
| Edge of pavement or roadway | Deed lot number |
| Corporation line | Parcel or index number |
| District line | Improvement |
| County line | Railroad |

| Revisions | |
|-----------|-----------------------|
| 1 | 4-15-64 |
| 2 | 5-15-65 |
| 3 | 5-15-65 |
| 4 | O.G.I.S 5-15-95 J.E.B |
| 5 | O.G.I.S 12-1-96 J.E.B |
| 6 | 6-18-07 H.S |
| 7 | 3/27/08 S.B.H |
| 8 | 4/16/12 S.H |



McDOWELL COUNTY
STATE OF WEST VIRGINIA
Office of Assessor

| | |
|---------------------------|---------------------|
| DISTRICT | BROWNS CREEK |
| SHEET NO: | 171 |
| Date, Aerial Photography: | April, 1961 |
| Date, Map: | July, 1962 |
| Photo No: | Scale: 1" = 400' |