

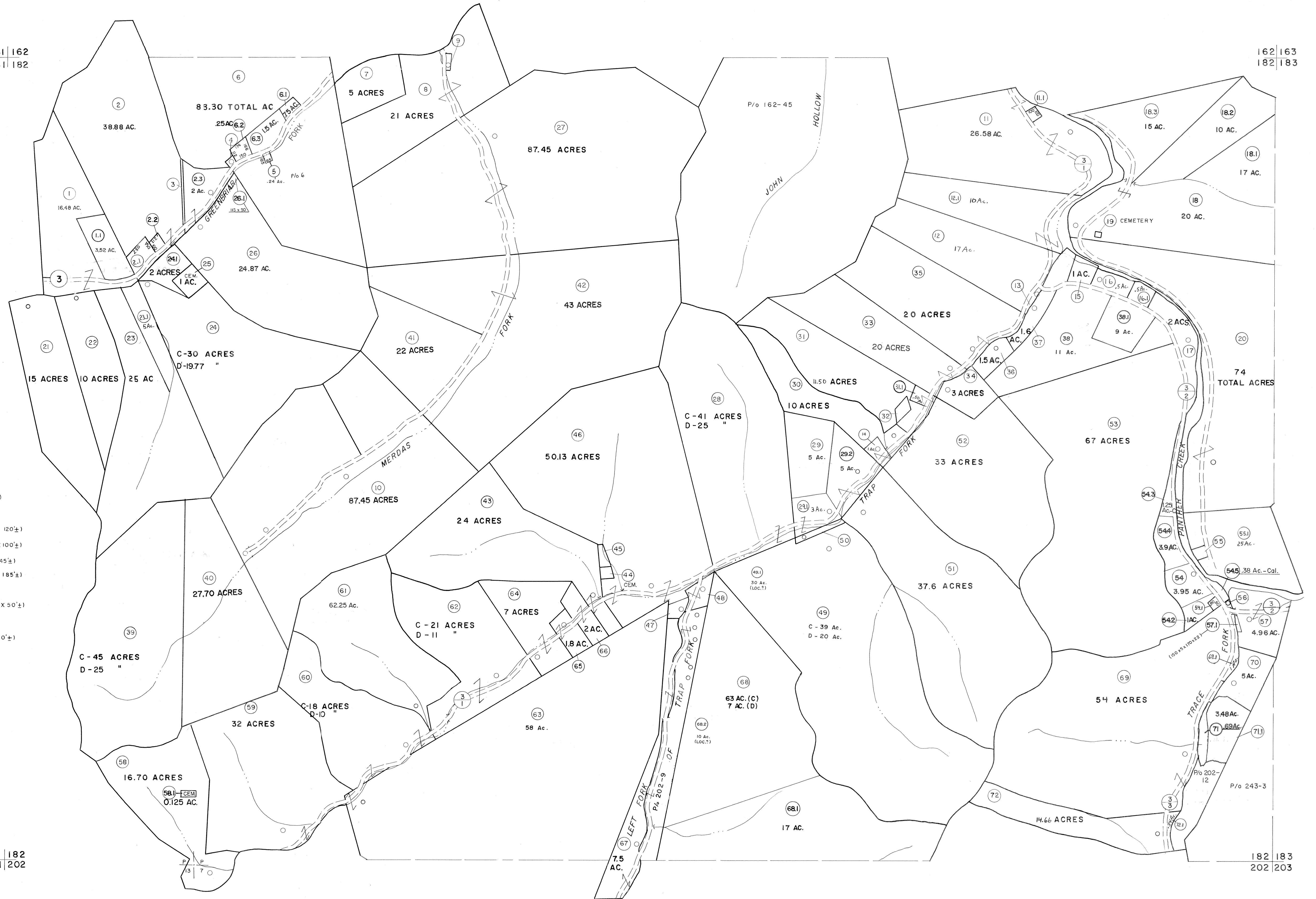
161 | 162
181 | 182

162 | 163
182 | 183

- 3 (10 1/2' X 62')
- 4 (70' X 90' X 100' X 90'±)
- 5 (65' X 165')
- 9 (148' X 60' X 145' X 60')
- 13 (264' X 62' X 264' X 20'±)
- 19 (50' X 50')
- 32 (170'± X 130'± X 150'± X 120'±)
- 44 (100'± X 120'± X 100'± X 100'±)
- 45 (200' X 100'± X 200' X 45'±)
- 47 (215'± X 100'± X 120'± X 185'±)
- 48 1 ACRE
- 50 (420'± X 50'± X 460'± X 50'±)
- 55 (100'± X 80'±)
- 56 (80'± X 35'± X 100'± X 60'±)

181 | 182
201 | 202

182 | 183
202 | 203



For Tax Purposes Only

Prepared by
MICHAEL BAKER, JR., INC.
Consulting Engineers
Rochester, Pennsylvania

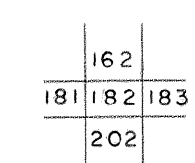
Legend

Property line	-----	Original lot line	-----
Edge of pavement or roadway	-----	Deed lot number	(15)
Corporation line	-----	Parcel or index number	(29)
District line	-----	Improvement	o
County line	-----	Railroad	-----

Revisions

1	4-15-64	9	SLS INC. 12/29/98	DSW	17
2	12-5-74	10	5/24/04	SBH	18
3	Revised 7-1-83	11	6-18-07	THS	19
4	July 1985	12			20
5	Revised 7-1-88	13			21
6	O.G.I.S 5-15-95	14	J.E.B		22
7	SLS INC. 6/24/98	15	J.W.M		23
8		16			24

KEY MAP



McDOWELL COUNTY
STATE OF WEST VIRGINIA
Office of Assessor

DISTRICT

SANDY RIVER

SHEET NO: 182

Date, Aerial Photography: April, 1961 Date, Map: July, 1962
Photo No: Scale: 1" = 400'