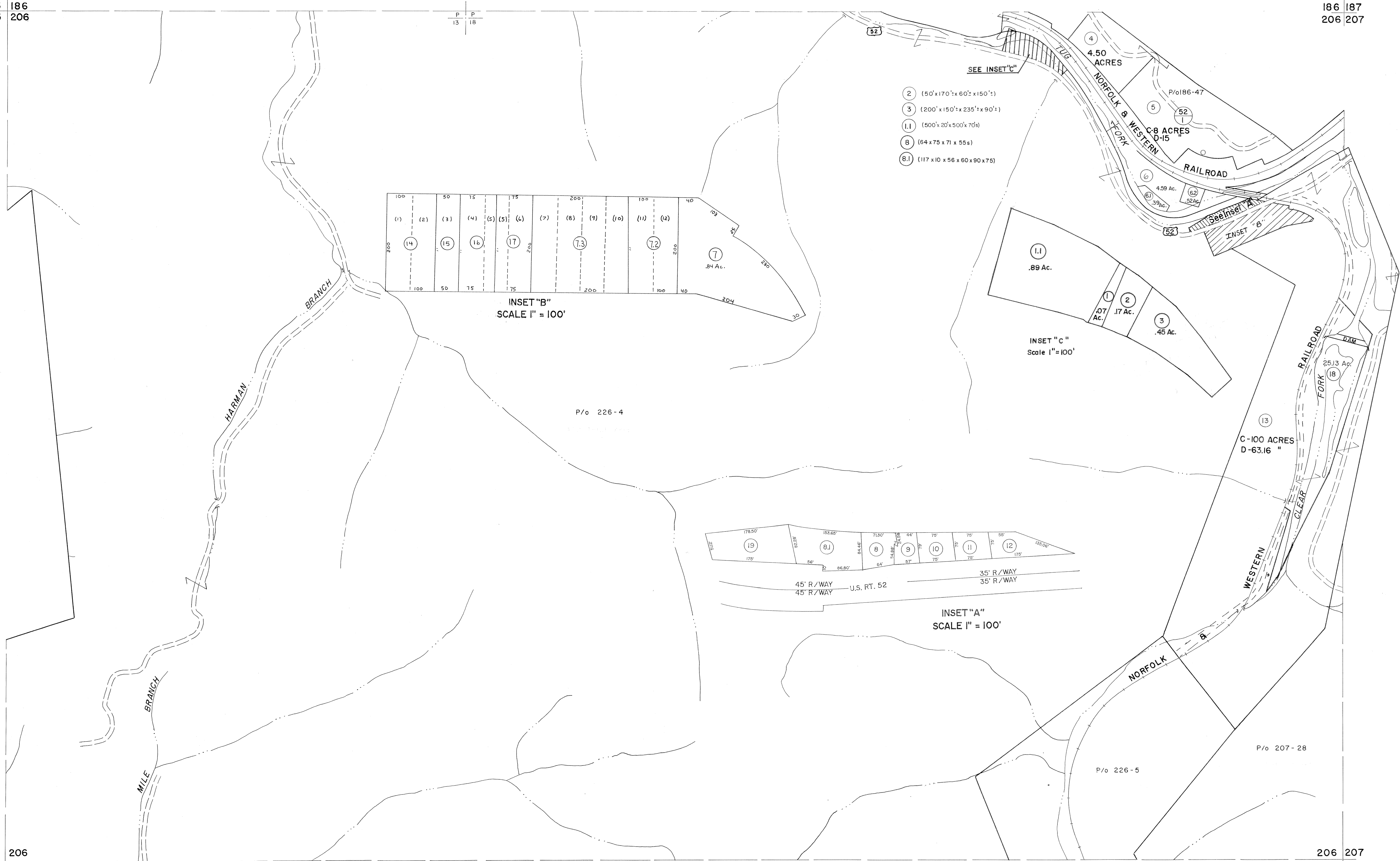


185 186
205 206

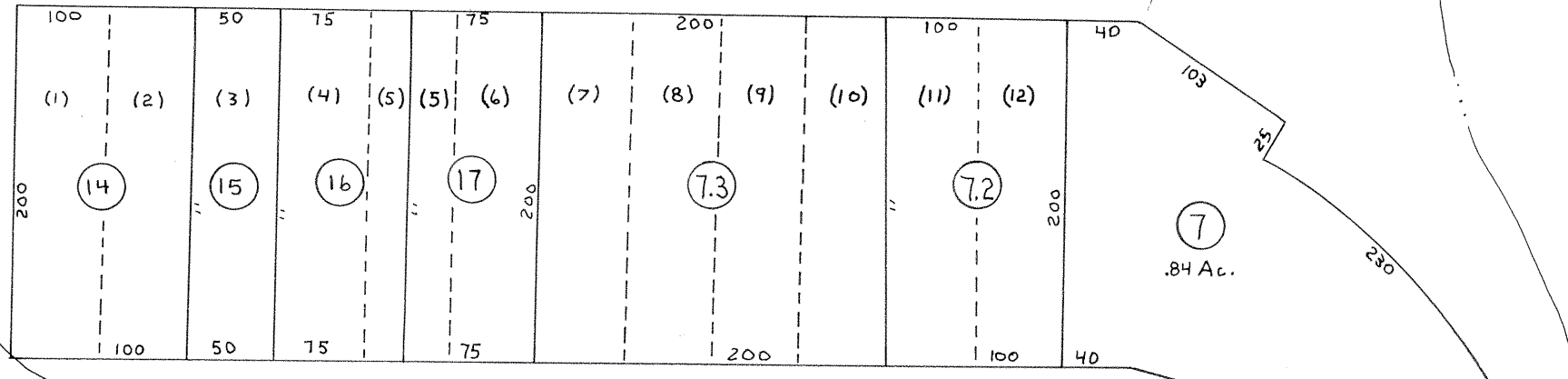
186 187
206 207

205 206
225 226

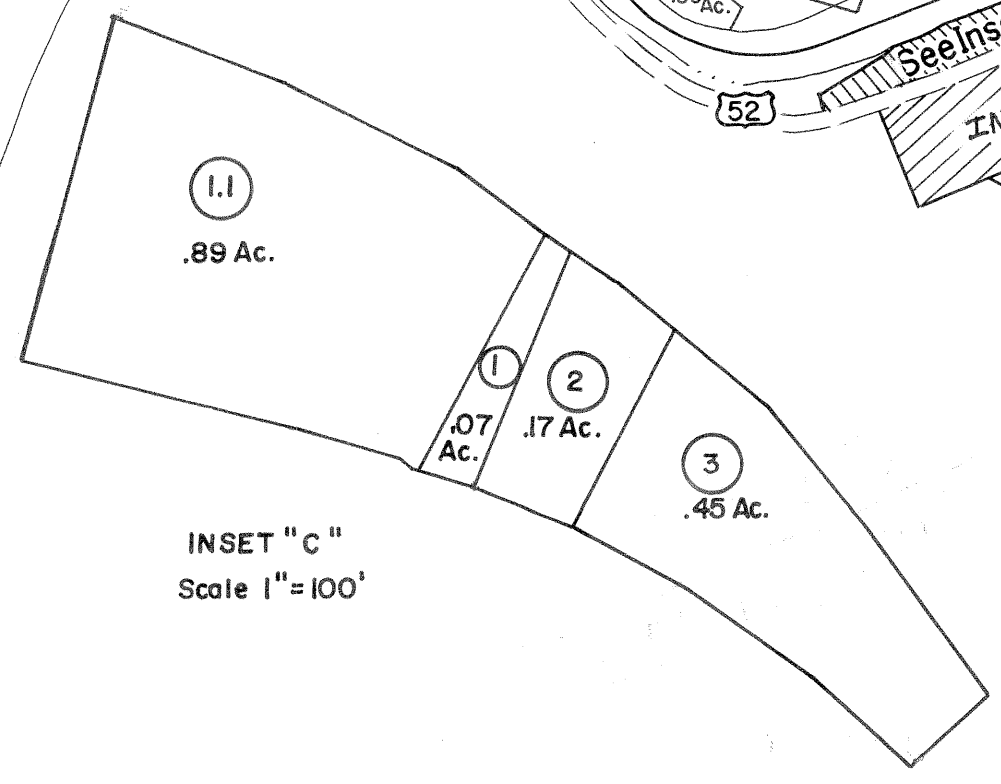
206 207
226 227



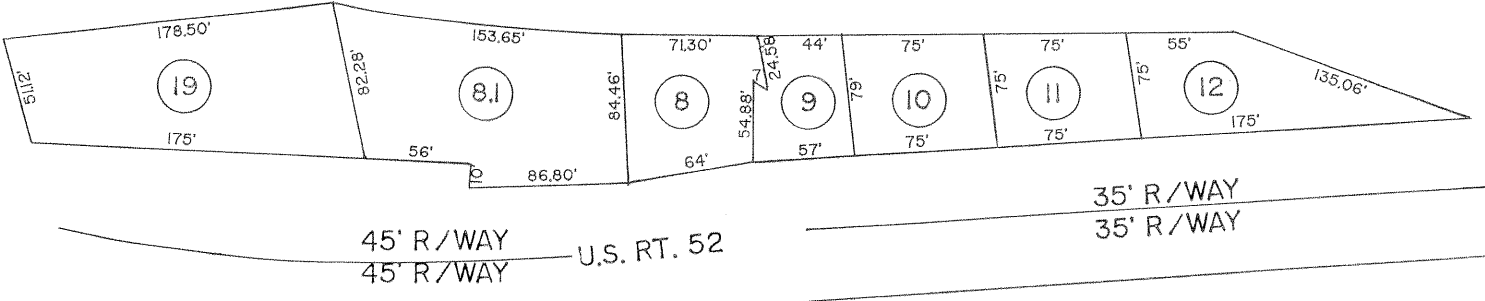
- ② (50'x170'x60'x150')
- ③ (200'x150'x235'x90')
- ①.1 (500'x20'x500'x70')
- ⑧ (64x75x71x55s)
- ⑧.1 (117x10x56x60x90x75)



INSET "B"
SCALE 1" = 100'



INSET "C"
Scale 1" = 100'

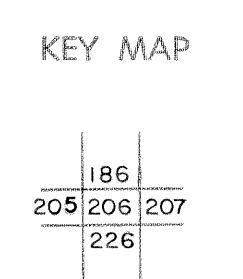


INSET "A"
SCALE 1" = 100'

For Tax Purposes Only
Prepared by
MICHAEL BAKER, JR., INC.
Consulting Engineers
Rochester, Pennsylvania

Legend	
Property line	Original lot line
Edge of pavement or roadway	Deed lot number
Corporation line	Parcel or index number
District line	Improvement
County line	Railroad

Revisions	
1 4-15-64	9 ESI 4/24/01 REK 17
2 12-6-74 T.G.	10 ESI 12/4/02 REK 18
3 Revised to 7-1-83 D	11 C-18-07 HKS 19
4 7-1-84 L.E.S.	12 20
5 July 1985 RRL	13 21
6 Revised to 7-1-88 D	14 22
7 SLS INC. 6/25/98 DSW	15 23
8 SLS INC. 12/29/98 DSW	16 24



McDOWELL COUNTY
STATE OF WEST VIRGINIA
Office of Assessor

DISTRICT
SANDY RIVER
SHEET NO: 206
Date, Aerial Photography: April, 1961 Date, Map: July, 1962
Photo No: Scale: 1" = 400'