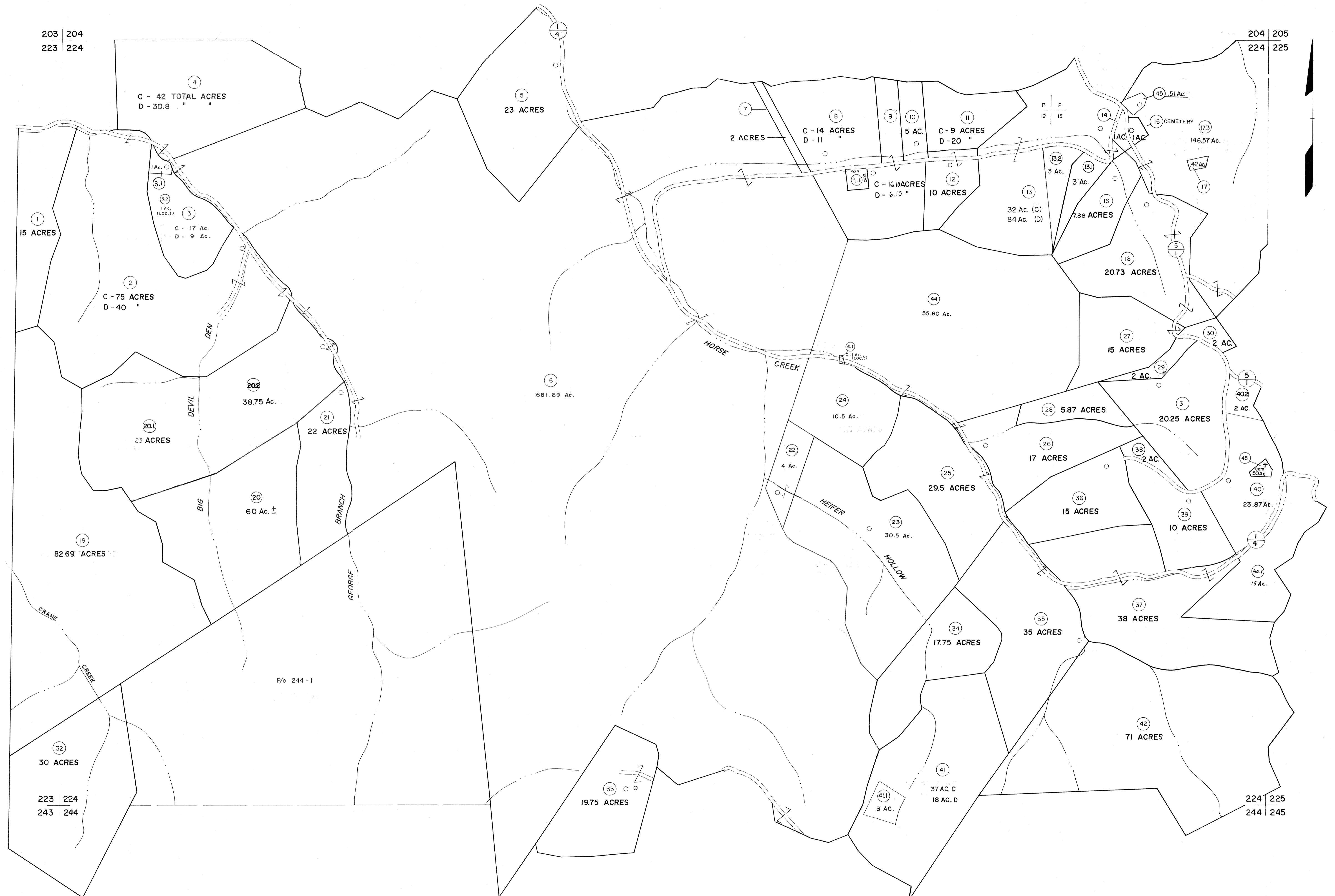


203 | 204  
223 | 224

204 | 205  
224 | 225



For Tax Purposes Only

Prepared by  
MICHAEL BAKER, JR., INC.  
Consulting Engineers  
Rochester, Pennsylvania

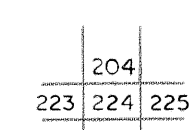
Legend

Property line	—	Original lot line	---
Edge of pavement or roadway	---	Deed lot number	(15)
Corporation line	----	Parcel or index number	(29)
District line	-----	Improvement	o
County line	-----	Railroad	+

Revisions

1	4-15-64	9	SLS INC. 12/30/98	DSW	17
2	12-6-74	10	ESI	4/24/01	REK
3	Revised to 7-1-83	11	5/23/04	SBH	18
4	7-1-84	12	S-15-05	4/4/5	20
5	July 1988	13	8/27/06	SBH	21
6	Revised to 7-1-88	14			22
7	Revised to 7-1-89	15			23
8	O.G.I.S. 5-15-95	16	J.E.B.		24

KEY MAP



**McDOWELL COUNTY**  
STATE OF WEST VIRGINIA  
Office of Assessor

DISTRICT

**SANDY RIVER**

SHEET NO: 224

Date, Aerial Photography: April, 1961  
Photo No: \_\_\_\_\_  
Date, Map: July, 1962  
Scale: 1" = 400'