

209 210
229 230

210 211
230 231

P P
12 29

P/O 209-2

SHEET 30

209 x 117.79 x 82 x 210 x 272 (52)
 80 x 252 x 190 x 100 x 232 (51)
 35 x 140 x 288 x 160 x 285 (50)
 P P 32 x 165 x 265 x 80 x 110 x 248 (49)
 12 30
 190 x 248 x 140 x 61 x 250 (48)
 90 x 110 x 250 x 106.5 x 90 x 213 (47)
 210 x 213 x 203 x 210 (46)
 209 x 210 x 210 x 91.8 x 108.71 (45)

P/O 210-9

P/O 210-10

310 TOTAL ACRES

274.77 TOTAL ACRES

328.65 ACRES

2.56 Ac.

.80 Ac.

.90 Ac.

3.03 Ac.

SEE SHEET 19
WELCH CORP.

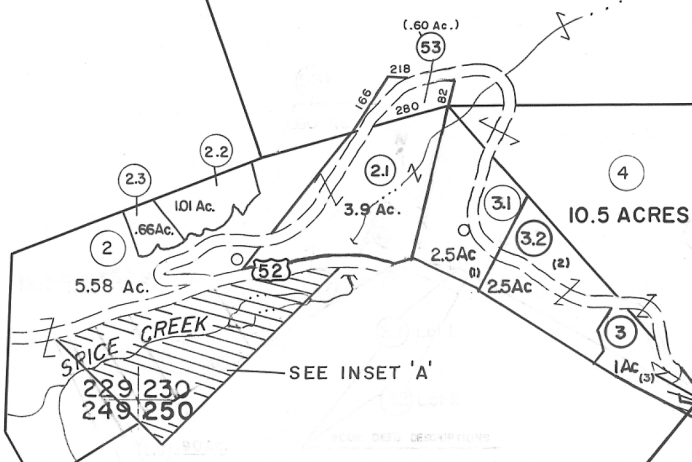
BROWNS CREEK DISTRICT
WELCH CORPORATION

10.5 ACRES

31.40 Ac.

22.50 TOTAL ACRES

18 ACRES



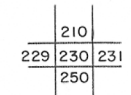
Legend

Property line	---	Original lot line	---
Edge of pavement or roadway	---	Deed lot number	(15)
Corporation line	---	Parcel or index number	(29)
District line	---	Improvement	o
County line	---	Railroad	+

Revisions

1	4-15-64	9	4/16/12	S&H	17
2	12-9-74	10			18
3	Revised 7-1-88	11			19
4	July 1985	12			20
5	Revised 6-7-88	13			21
6	O.G.I.S 5-15-95	14			22
7	ESI 4/26/01	15			23
8	2-1-10	16			24

KEY MAP



MCDOWELL COUNTY
 STATE OF WEST VIRGINIA
 Office of Assessor

DISTRICT **BROWNS CREEK WELCH**

SHEET NO: 230

Date, Aerial Photography: April, 1961
 Photo No:
 Date, Map: July, 1962
 Scale: 1" = 400'

For Tax Purposes Only

Prepared by
MICHAEL BAKER, JR., INC.
 Consulting Engineers
 Rochester, Pennsylvania