

213|214
233|234

214|215
234|235

P/6 233-1

P/6 215-3

P/6 235-1

SHEET 03
CREEK

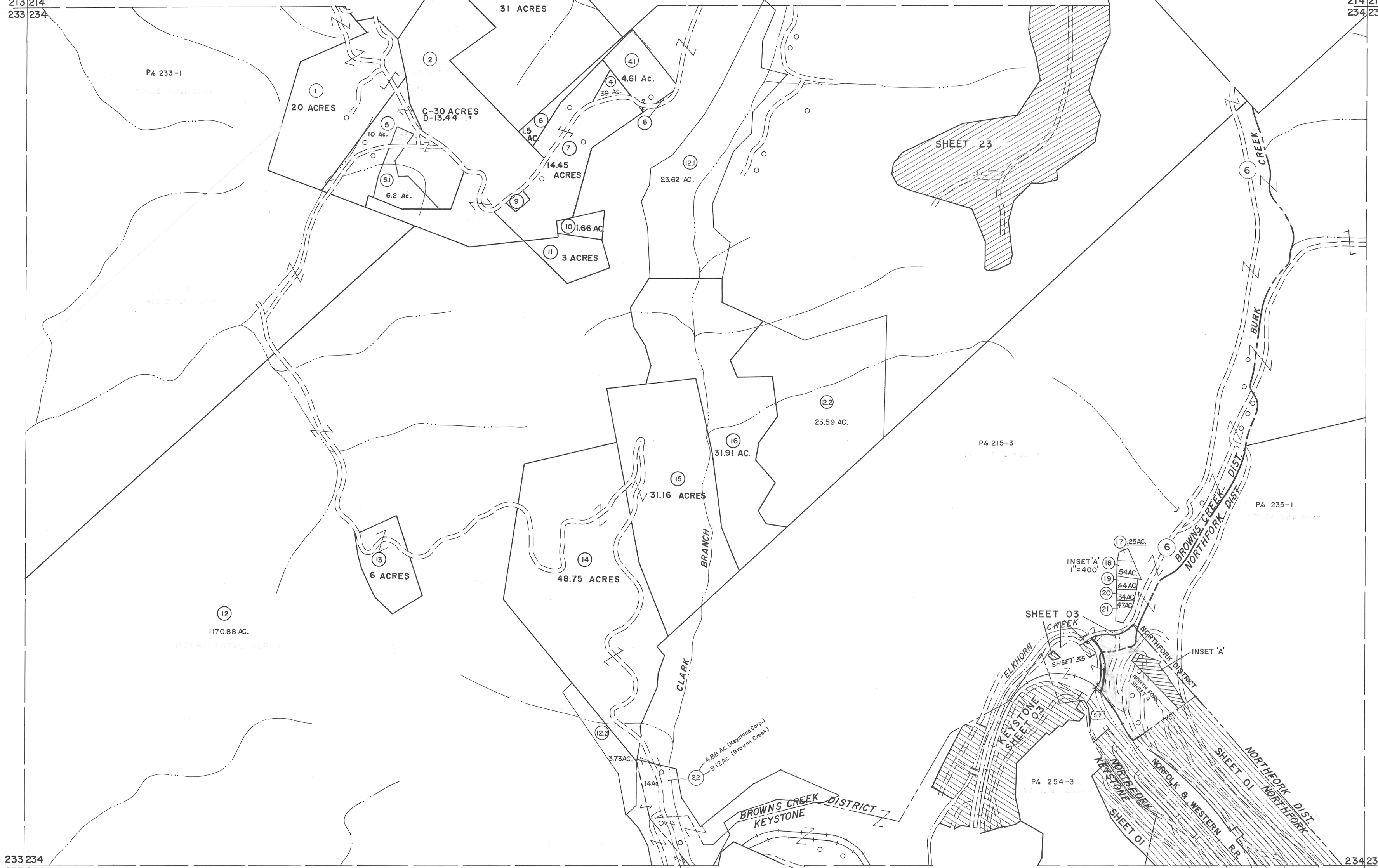
SHEET 35

P/6 254-3

233|234
253|254

234|235
254|255

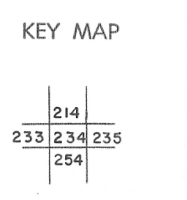
- (17) (110' x 28' x 81.1' x 66.24' x 68.68' x 16)
- (8) (107' x 130' ± x 70' ± x 302')
- (9) (180' ± x 100' x 150' ± x 135')
- (18) (165' x 38.15' x 178.37' x 27.11' x 131.1' x 28)
- (19) (82.77' x 177.1' x 109.86' x 178.37')
- (20) (93.04' x 161.08' x 86.79' x 177.14)
- (21) (72.15' x 130.51' x 64.26' x 169.92' x 161.08)



For Tax Purposes Only
 Prepared by
MICHAEL BAKER, JR., INC.
 Consulting Engineers
 Rochester, Pennsylvania

Legend	
Property line	Original lot line
Edge of pavement or roadway	Deed lot number
Corporation line	Parcel or index number
District line	Improvement
County line	Railroad

Revisions	
1	4-15-64
2	REVISED JULY 1965 jag
3	12-9-74 T.G.
4	Revised 7-1-83
5	July 1985
6	Revised 6-7-88
7	Revised 6-7-87
8	O.G.I.S 5-15-95 J.E.B
9	O.G.I.S 12-1-96 J.E.B
10	ESI 12/4/02 REK
11	5-15-05 W.A.S
12	
13	
14	
15	
16	
17	
18	
19	
20	
21	
22	
23	
24	



McDOWELL COUNTY
 STATE OF WEST VIRGINIA
 Office of Assessor

DISTRICT
BROWNS CREEK
 SHEET NO: 234
 Date, Aerial Photography: April, 1961 Date, Map: July, 1962
 Photo No: Scale: 1" = 400