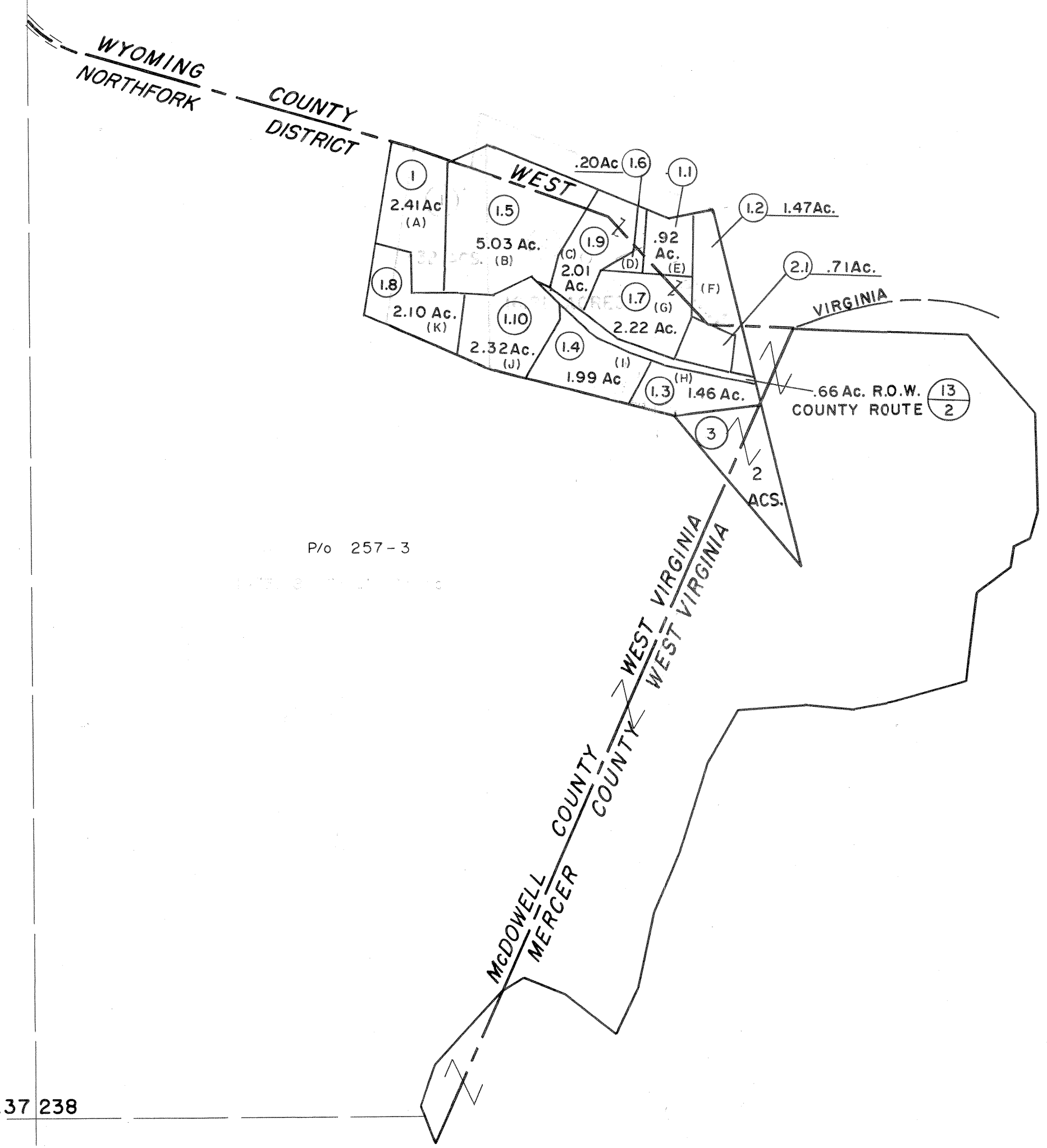
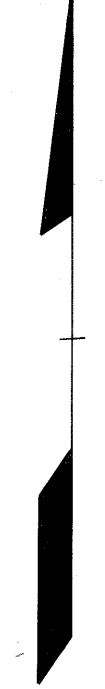


237 238



P/O 257-3

237 238

For Tax Purposes Only

Prepared by  
 MICHAEL BAKER, JR., INC.  
 Consulting Engineers  
 Rochester, Pennsylvania

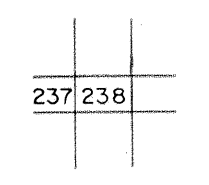
Legend

Property line	— — — — —	Original lot line	— · — · — · —
Edge of pavement or roadway	— — — — —	Dead lot number	(15)
Corporation line	— · — · — · —	Parcel or index number	(19)
District line	— · — · — · —	Improvement	○
County line	— · — · — · —	Railroad	— + — + — + —

Revisions

1	4-15-64	9		17	
2	12-9-74	10	T.G.	18	
3	Revised to 7-1-83	11		19	
4	July, 1985	12		20	
5	8/27/06	13	S&H	21	
6		14		22	
7		15		23	
8		16		24	

KEY MAP



McDOWELL COUNTY

STATE OF WEST VIRGINIA

Office of Assessor

DISTRICT

NORTHFORK

SHEET NO: 238

Date, Aerial Photography: April, 1961 Date, Map: July, 1962  
 Photo No: Scale: 1" = 400'