

232 233
252 253

233 234
253 254

252 253
272 273

253 254
273 274

UPPER BELCHER BRANCH

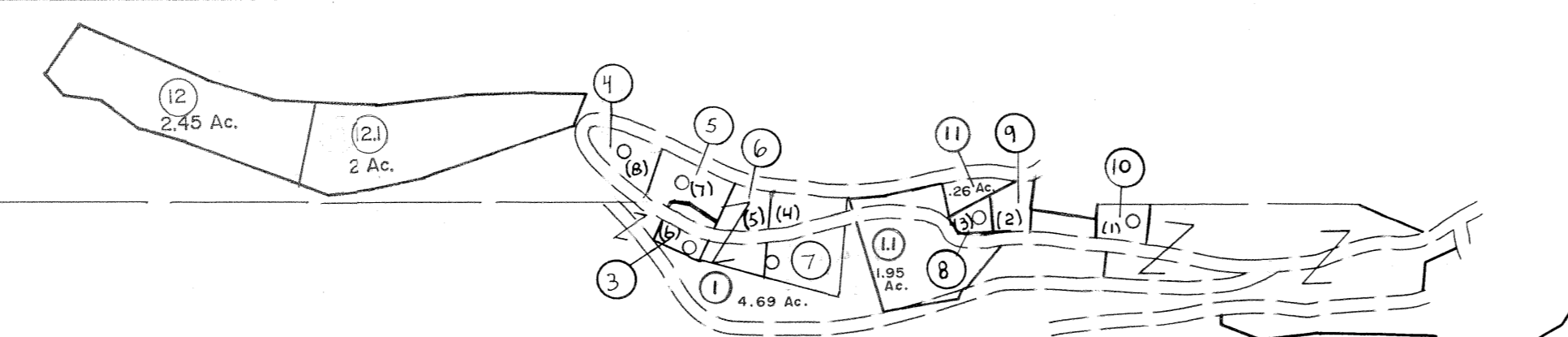
BROWNS CREEK
ADKIN

HARMAN BRANCH

C-276 TOTAL ACRES
D-355.69 " "

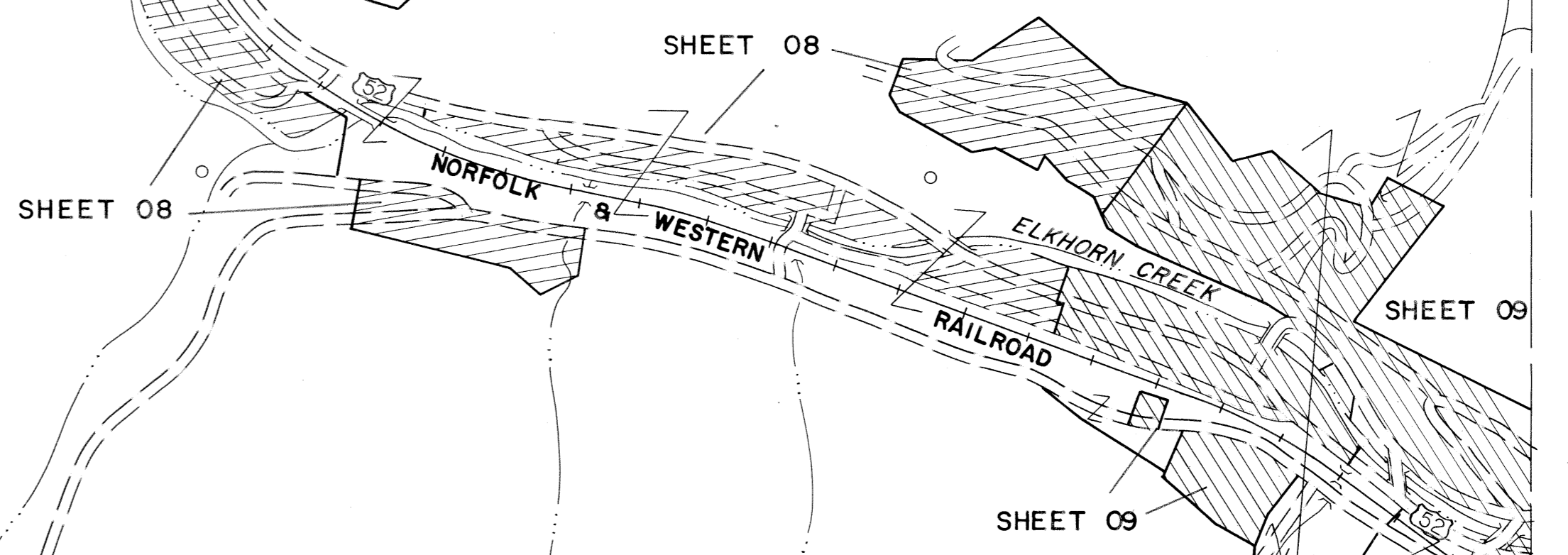
②
1,924.39 AC.

DISTRICT
DISTRICT



P/ 234-12

P/ 254-4



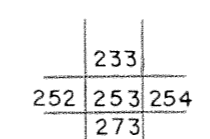
Legend

Property line	—	Original lot line	---
Edge of pavement or roadway	---	Deed lot number	(15)
Corporation line	---	Parcel or index number	(9)
District line	---	Improvement	o
County line	---	Railroad	+

Revisions

NO.	DATE	BY	DESCRIPTION
1	4-15-64		
2	12-10-74	T.G.	
3	Revised to 7-1-83	J.E.B.	
4	7/1/84	R.L.B.	
5	July 1985	J.E.B.	
6	6.6.1.S 5-15-95	J.E.B.	
7	SLS INC. 12/30/98	DSW	
8			

KEY MAP



For Tax Purposes Only

Prepared by
MICHAEL BAKER, JR., INC.
Consulting Engineers
Rochester, Pennsylvania

McDOWELL COUNTY
STATE OF WEST VIRGINIA
Office of Assessor

DISTRICT **BROWNS CREEK
ADKIN**

SHEET NO: 253

Date, Aerial Photography: April, 1961 Date, Map: July, 1962
Photo No: Scale: 1" = 400'