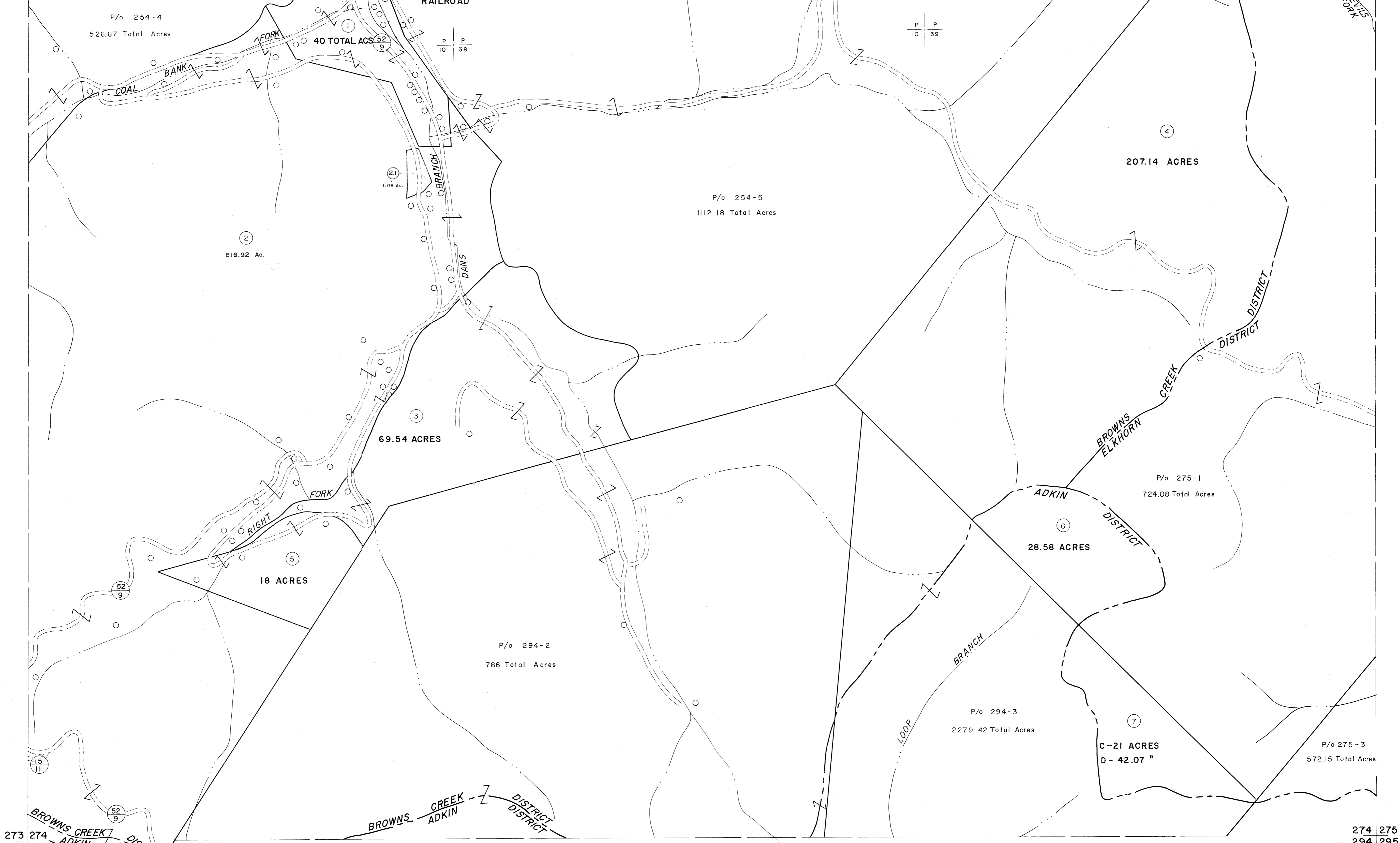


253 254  
273 274

254 255  
274 275



273 274  
293 294

274 275  
294 295

For Tax Purposes Only

Prepared by  
MICHAEL BAKER, JR., INC.  
Consulting Engineers  
Rochester, Pennsylvania

| Legend                      |      |
|-----------------------------|------|
| Property line               | —    |
| Edge of pavement or roadway | —    |
| Cooperation line            | —    |
| District line               | —    |
| County line                 | —    |
| Original lot line           | —    |
| Deed lot number             | (15) |
| Parcel or index number      | (2)  |
| Improvement                 | o    |
| Railroad                    | —    |

| Revisions |                         |
|-----------|-------------------------|
| 1         | 4-15-64                 |
| 2         | 7-1-83                  |
| 3         | July 1985               |
| 4         | O.G.I.S. 5-15-95 J.E.B. |
| 5         |                         |
| 6         |                         |
| 7         |                         |
| 8         |                         |

KEY MAP

**MCDOWELL COUNTY**  
STATE OF WEST VIRGINIA  
Office of Assessor

DISTRICT **BROWNS CREEK ELKHORN — ADKIN**

SHEET NO: 274

Date, Aerial Photography: April, 1961 Date, Map: July, 1962  
Photo No: Scale: 1" = 400'