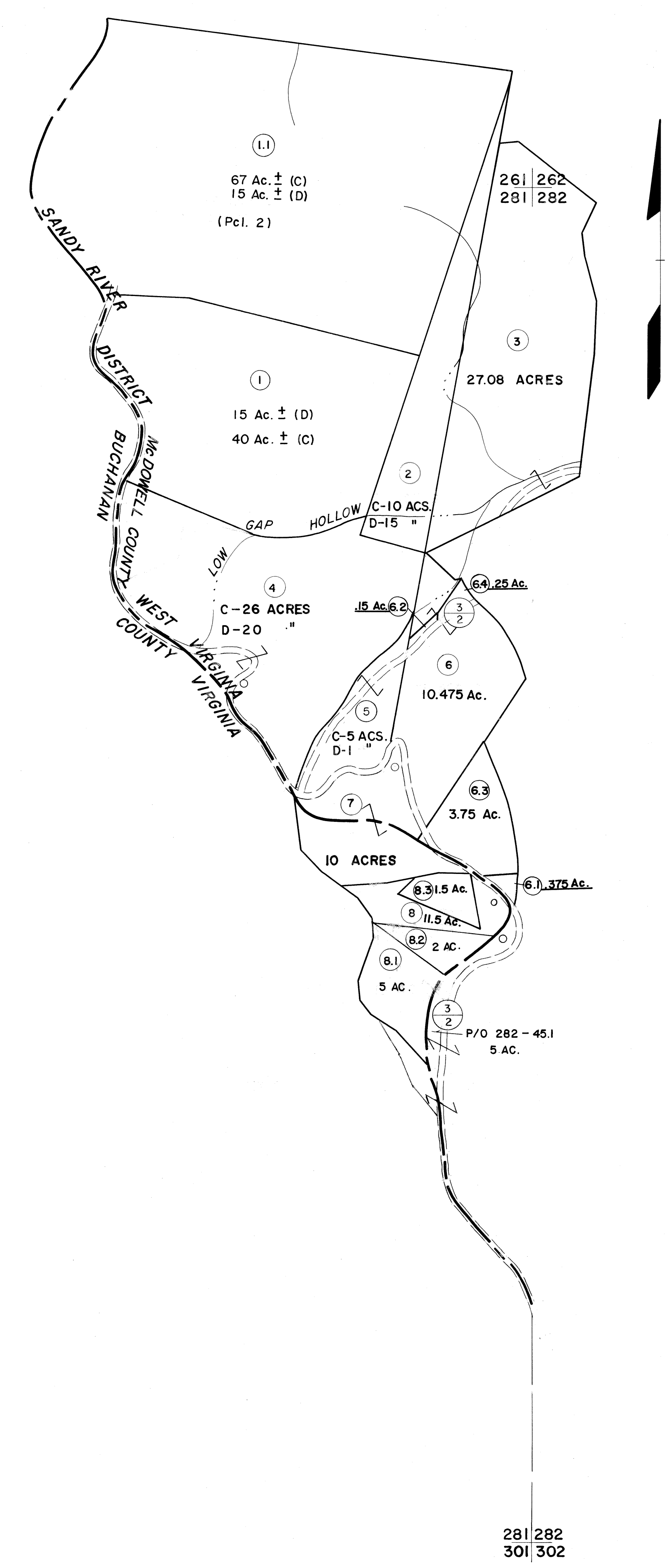


261
281

281
301



281 282
301 302

For Tax Purposes Only

Prepared by
MICHAEL BAKER, JR., INC.
Consulting Engineers
Rochester, Pennsylvania

Legend	
Property line	—————
Edge of pavement or roadway	-----
Corporation line	-----
District line	-----
County line	-----
Original lot line	-----
Deed lot number	(15)
Parcel or index number	(9)
Improvement	○
Railroad	+++++

Revisions			
1	4-15-64	9	17
2	12-10-74	10	18
3	Revised to 7-1-83	11	19
4	July 1985	12	20
5	Revised to 7-1-88	13	21
6		14	22
7		15	23
8		16	24

KEY MAP

261
281 282
301

McDOWELL COUNTY
STATE OF WEST VIRGINIA
Office of Assessor

DISTRICT **SANDY RIVER**

SHEET NO: 281

Date, Aerial Photography: April, 1961 Date, Map: July, 1962
Photo No: Scale: 1" = 400'