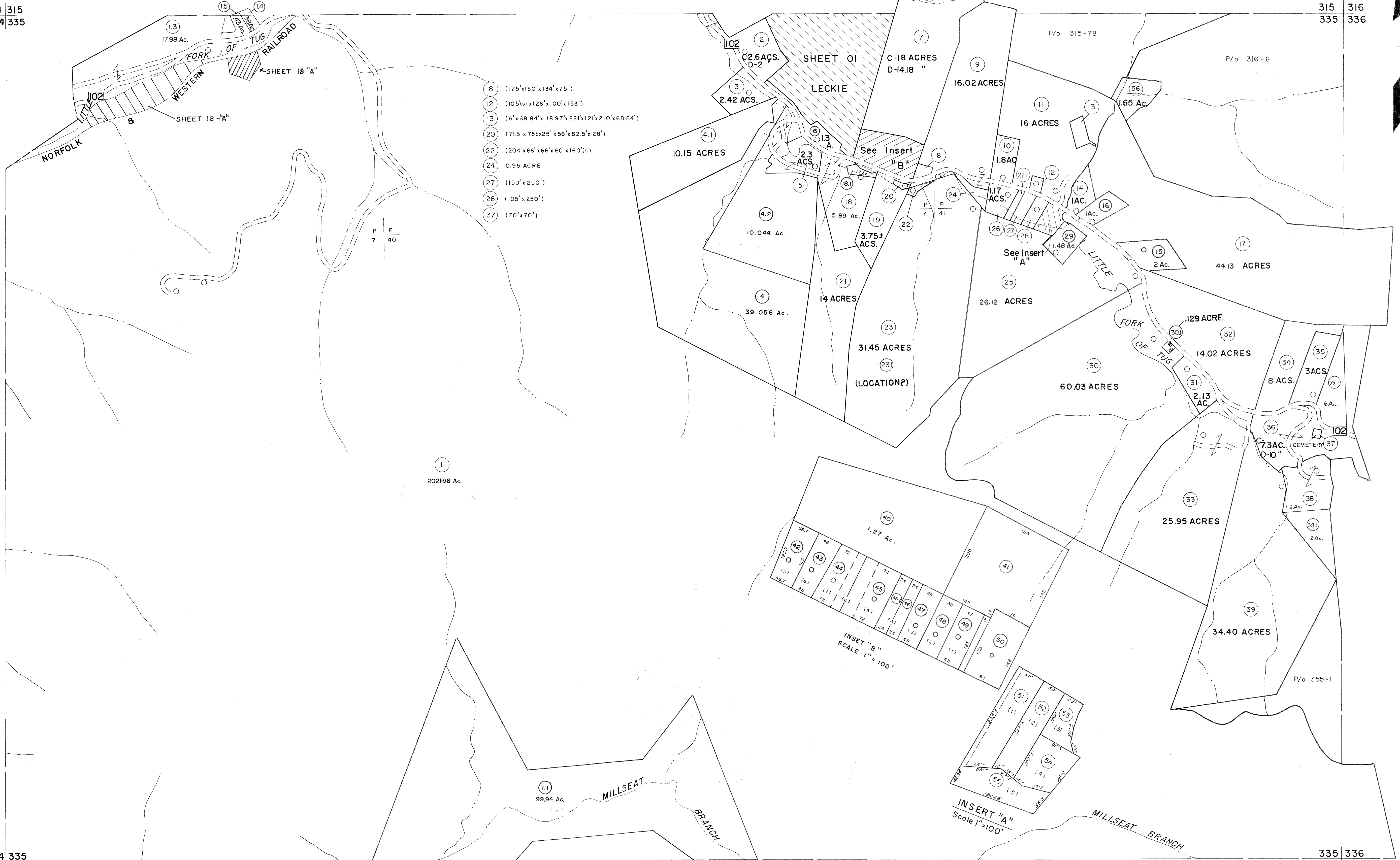


314 315
334 335

315 316
335 336

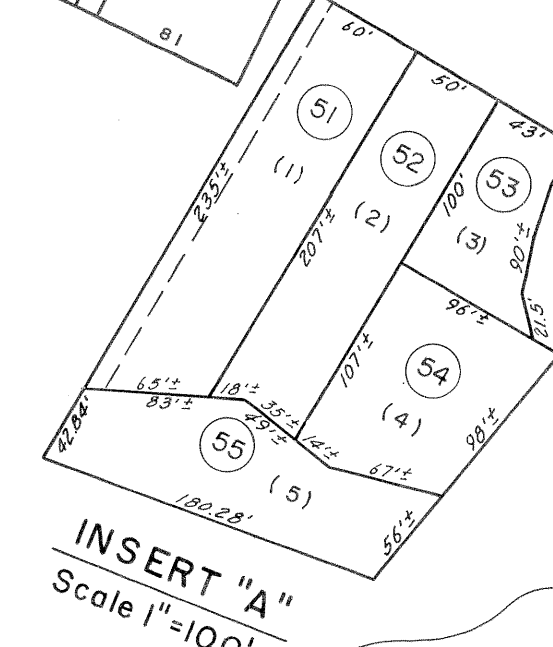
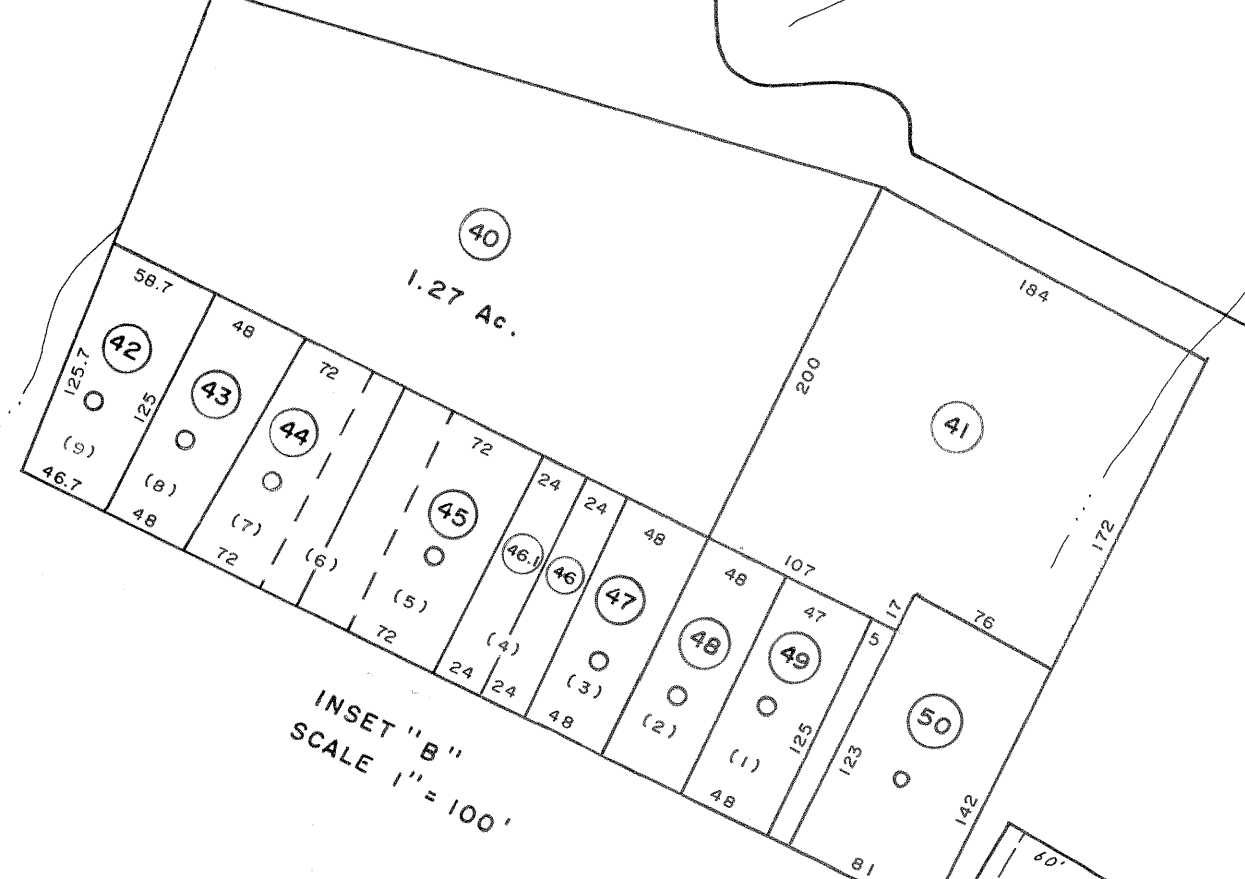
334 335
354 355

335 336
355 356



- 8 (175'x150'x134'x75')
- 12 (105'x126'x100'x153')
- 13 (6'x68.84'x118.97'x221'x121'x210'x68.84')
- 20 (71.5'x75'x25'x56'x82.5'x28')
- 22 (204'x66'x66'x60'x160'x)
- 24 0.95 ACRE
- 27 (150'x250')
- 28 (105'x250')
- 37 (70'x70')

1
202196 Ac.



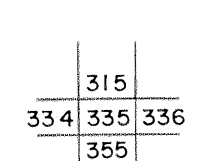
Legend

Property line	-----	Original lot line	-----
Edge of pavement or roadway	-----	Deed lot number	(15)
Corporation line	-----	Parcel or index number	(29)
District line	-----	Improvement	o
County line	-----	Railroad	-----

Revisions

1	4-15-64	9	S&H	12/31/05	17
2	(2-9-74)	10	S&H	8/25/06	18
3	REV. TO 7-1-83	11	H&S	6-18-07	19
4	July 1985	12			20
5	O.G.I.S 5-15-95	13	J.E.B		21
6	SLS INC. 1/4/99	14	DSW		22
7	ESI 12/5/02	15	REK		23
8	5/23/04	16	S&H		24

KEY MAP



McDOWELL COUNTY
STATE OF WEST VIRGINIA
Office of Assessor

DISTRICT
ADKIN

SHEET NO: 335

Date, Aerial Photography: April, 1961 Date, Map: July, 1962
Photo No: Scale: 1" = 400'

For Tax Purposes Only
Prepared by
MICHAEL BAKER, JR., INC.
Consulting Engineers
Rochester, Pennsylvania