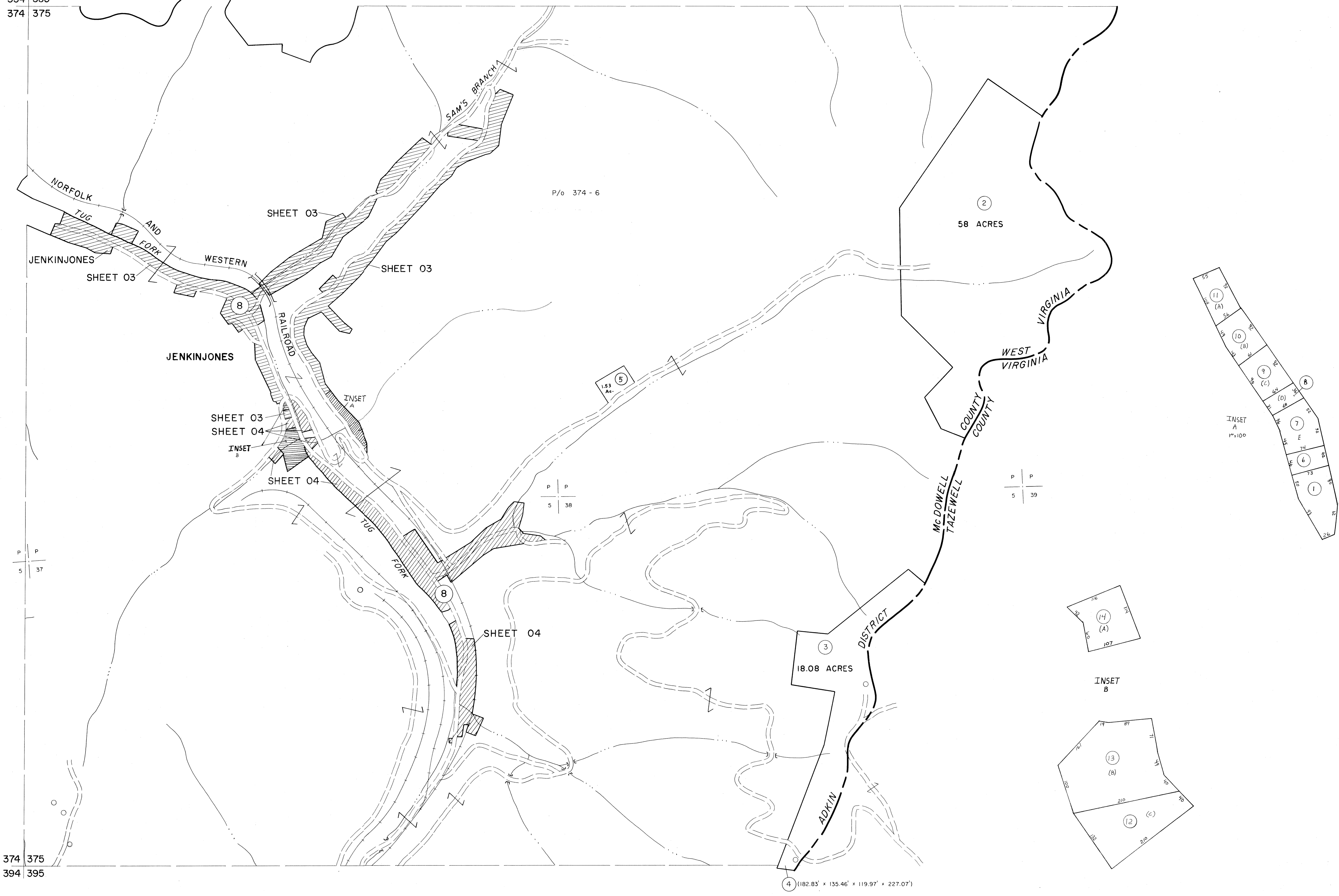


354 355
374 375

355 356
375 375



374 375
394 395

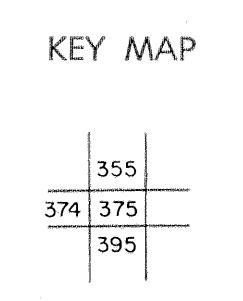
375 395

For Tax Purposes Only

Prepared by
MICHAEL BAKER, JR., INC.
Consulting Engineers
Rochester, Pennsylvania

Legend	
Property line	—————
Edge of pavement or roadway	—————
Corporation line	—————
District line	—————
County line	—————
Original lot line	-----
Dead lot number	(15)
Parcel or index number	(29)
Improvement	○
Railroad	—+—+—+—

Revisions	
1	4-15-64
2	12-11-74 T.G.
3	To JULY 1983 C.P.
4	July 1985 J.W.M.
5	SLS INC. 6/26/98 J.W.M.
6	
7	
8	



McDOWELL COUNTY
STATE OF WEST VIRGINIA
Office of Assessor

DISTRICT **ADKIN**

SHEET NO: 375

Date, Aerial Photography: April, 1961 Date, Map: July, 1962
Photo No: Scale: 1" = 400'