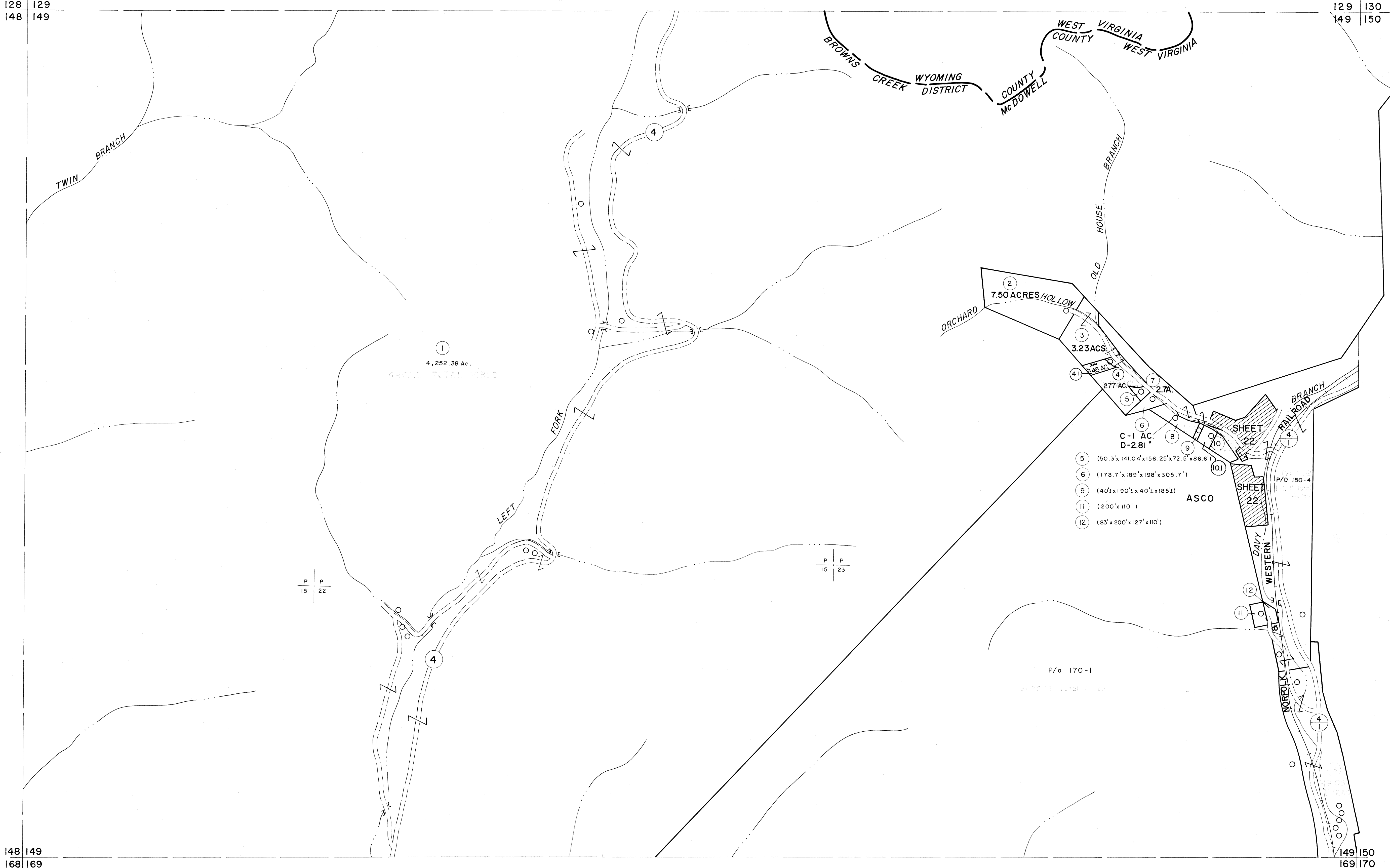


128 129
148 149

129 130
149 150

148 149
168 169

149 150
169 170



P 15
P 22

P 15
P 23

P/O 170-1

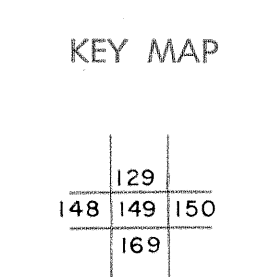
P/O 150-4

For Tax Purposes Only

Prepared by
MICHAEL BAKER, JR., INC.
Consulting Engineers
Rochester, Pennsylvania

| Legend | |
|-----------------------------|-----------|
| Property line | — |
| Edge of pavement or roadway | - - - - |
| Corporation line | - · - · - |
| District line | - - - - |
| County line | - · - · - |
| Original lot line | - - - - |
| Deed lot number | (15) |
| Parcel or index number | (2) |
| Improvement | ○ |
| Railroad | —+—+—+— |

| Revisions | | | |
|-----------|-------------------|----|----|
| 1 | 4-15-64 | 9 | 17 |
| 2 | 12-3-74 | 10 | 18 |
| 3 | Revised to 7-1-83 | 11 | 19 |
| 4 | July 1985 | 12 | 20 |
| 5 | O.G.'S 12-1-96 | 13 | 21 |
| 6 | 4-4-5 5-15-05 | 14 | 22 |
| 7 | | 15 | 23 |
| 8 | | 16 | 24 |



McDOWELL COUNTY
STATE OF WEST VIRGINIA
Office of Assessor

DISTRICT
BROWNS CREEK

SHEET NO: 149

Date, Aerial Photography: April, 1961 Date, Map: July, 1962
Photo No: Scale: 1" = 400'