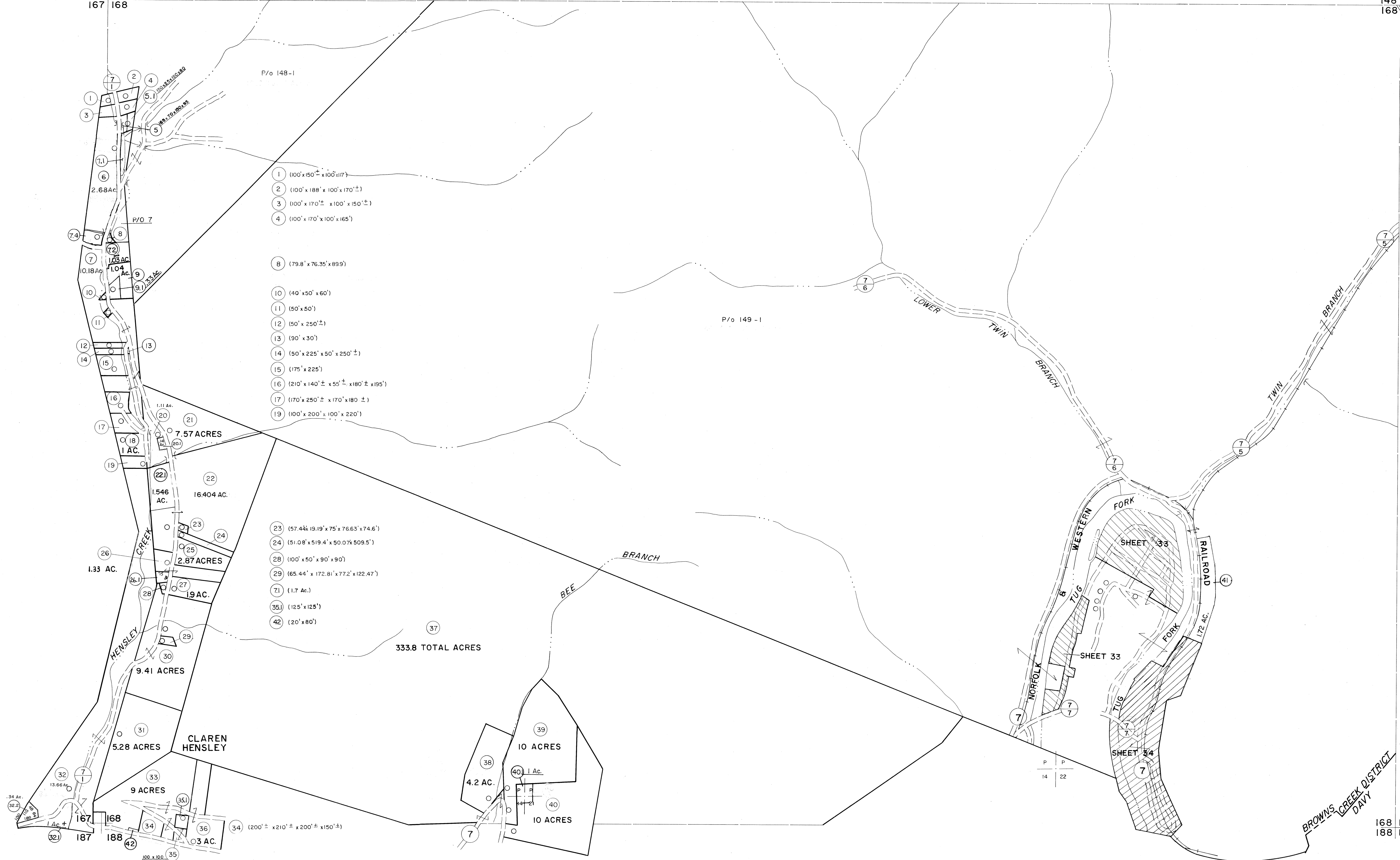


147 148
167 168

148 149
168 169



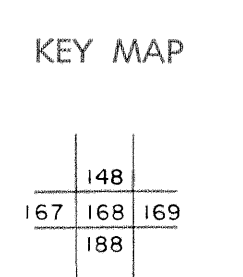
- 1 (100' x 150' ± x 100' x 117')
- 2 (100' x 188' x 100' x 170' ±)
- 3 (100' x 170' ± x 100' x 150' ±)
- 4 (100' x 170' x 100' x 165')
- 8 (79.8' x 76.35' x 89.9')
- 10 (40' x 50' x 60')
- 11 (50' x 50')
- 12 (50' x 250' ±)
- 13 (90' x 30')
- 14 (50' x 225' x 50' x 250' ±)
- 15 (175' x 225')
- 16 (210' x 140' ± x 50' ± x 180' ± x 195')
- 17 (170' x 250' ± x 170' x 180' ±)
- 19 (100' x 200' ± x 100' x 220')

- 23 (57.44' x 19.19' x 75' x 76.63' x 74.6')
- 24 (51.08' x 519.4' x 50.07' x 509.5')
- 28 (100' x 50' x 90' x 90')
- 29 (65.44' x 172.81' x 77.2' x 122.47')
- 31 (1.7 Ac.)
- 35 (125' x 125')
- 42 (20' x 80')

For Tax Purposes Only
 Prepared by
MICHAEL BAKER, JR., INC.
 Consulting Engineers
 Rochester, Pennsylvania

Legend	
Property line	Original lot line
Edge of pavement or roadway	Deed lot number
Corporation line	Parcel or index number
District line	Improvement
County line	Railroad

Revisions	
1	4-15-64
2	REVISED JULY 1965 jag
3	12-4-74 T.G.
4	Revised 7-1-83 J.E.B.
5	7-1-84 J.E.B.
6	Revised 6-21-88 J.E.B.
7	Revised 6-21-88 J.E.B.
8	Revised 7-1-89 J.E.B.



McDOWELL COUNTY
 STATE OF WEST VIRGINIA
 Office of Assessor

DISTRICT
BROWNS CREEK
 SHEET NO: 168
 Date, Aerial Photography: April, 1961
 Photo No:
 Date, Map: July, 1962
 Scale: 1" = 400'