

209 210  
229 230

210 211  
230 231

P P  
12 29

P/O 209-2

SHEET 30

209x117.79x82x210x272	(52)
80x222x190x100x222	(51)
35x140x288x160x265	(50)
P P 32x18x125x	(49)
12 30 80x110x248	(48)
190x248x140x61x250	(47)
90x110x290x106.5x90x213	(46)
210x215x203x210	(45)
209x210x210x81.8x108.7	(44)

P/O 210-9

P/O 210-10

310 TOTAL ACRES

274.77 TOTAL ACRES

328.65 ACRES

3.03 Ac.

31.40 Ac.

22.50 TOTAL ACRES

18 ACRES

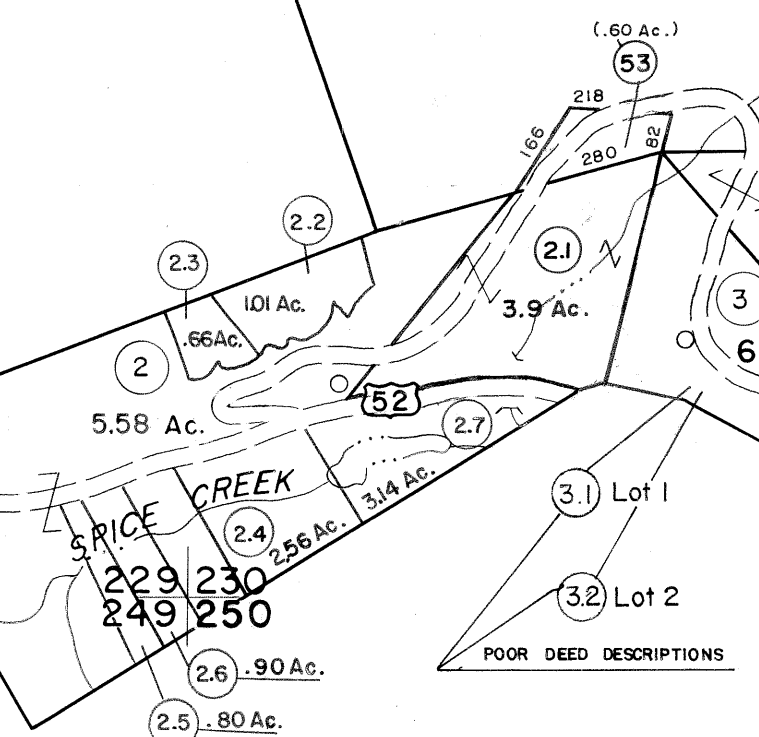
230 231  
250 251

SEE SHEET 19  
WELCH CORP.

BROWNS CREEK DISTRICT  
WELCH CORPORATION

10.5 ACRES

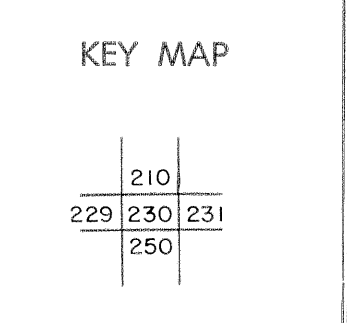
6 AC.



For Tax Purposes Only  
 Prepared by  
**MICHAEL BAKER, JR., INC.**  
 Consulting Engineers  
 Rochester, Pennsylvania

Legend	
Property line	—
Edge of pavement or roadway	—
Corporation line	—
District line	—
County line	—
Original lot line	—
Deed lot number	(15)
Parcel or index number	(99)
Improvement	○
Railroad	—

Revisions	
1	4-15-64
2	12-9-74 T.G.
3	Revised 7-1-85
4	July 1985
5	Revised 7-1-88
6	O.G.I.S 5-15-95 J.E.B.
7	ESI 4/26/01 REK
8	
9	
10	
11	
12	
13	
14	
15	
16	
17	
18	
19	
20	
21	
22	
23	
24	



**MCDOWELL COUNTY**  
 STATE OF WEST VIRGINIA  
 Office of Assessor

DISTRICT **BROWNS CREEK WELCH**  
 SHEET NO: 230  
 Date, Aerial Photography: April, 1961  
 Photo No:  
 Date, Map: July, 1962  
 Scale: 1" = 400'