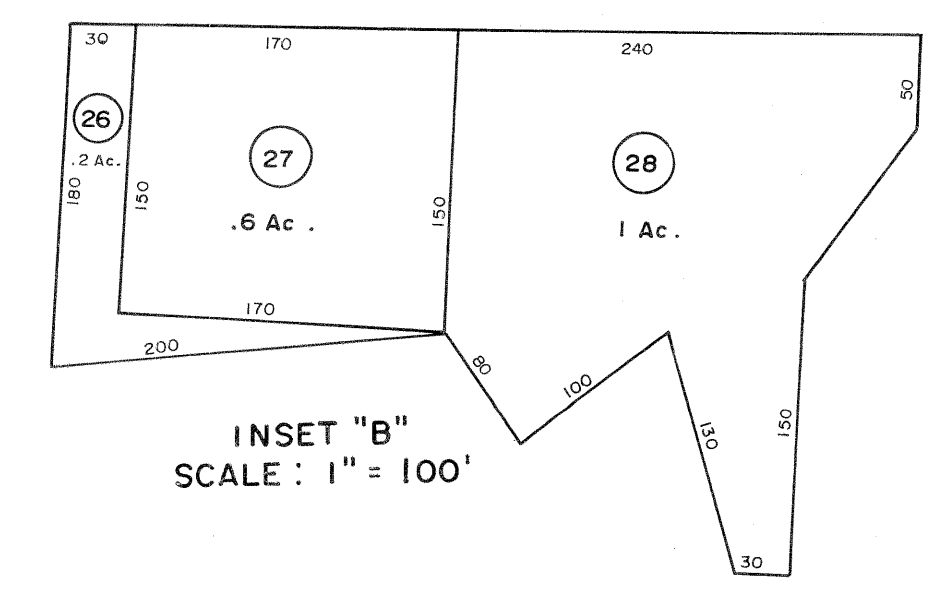
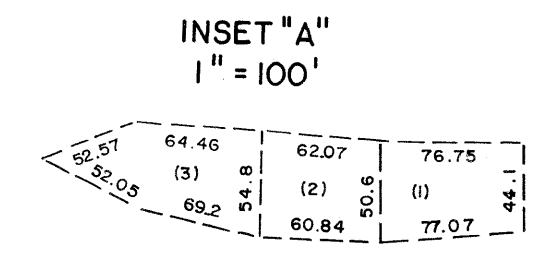
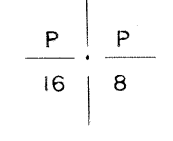
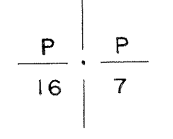
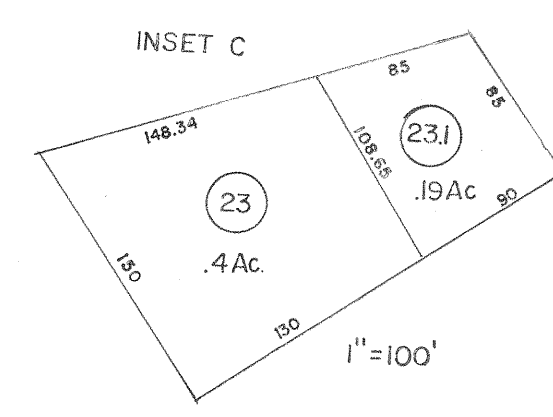


122

103  
122 123

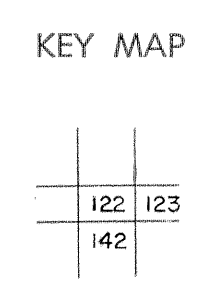


For Tax Purposes Only

Prepared by  
MICHAEL BAKER, JR., INC.  
Consulting Engineers  
Rochester, Pennsylvania

Legend	
Property line	Original lot line
Edge of pavement or roadway	Deed lot number
Corporation line	Parcel or index number
District line	Improvement
County line	Railroad

Revisions			
1	4-15-64	9	8/27/06 S&H
2	Revised to 7-1-83 J.E.B.	10	
3	July 1988 112	11	
4	Revised to 7-1-86 J.E.B.	12	
5	O.G.I.S. 12-1-96 J.E.B.	13	
6	SLS INC. 6/22/98 DSW	14	
7	SLS INC. 12/29/98 DSW	15	
8	5/24/04 S&H	16	



**McDOWELL COUNTY**  
STATE OF WEST VIRGINIA  
Office of Assessor

DISTRICT  
**SANDY RIVER**  
SHEET NO: 122  
Date, Aerial Photography: April, 1961 Date, Map: July, 1962  
Photo No: Scale: 1" = 400'