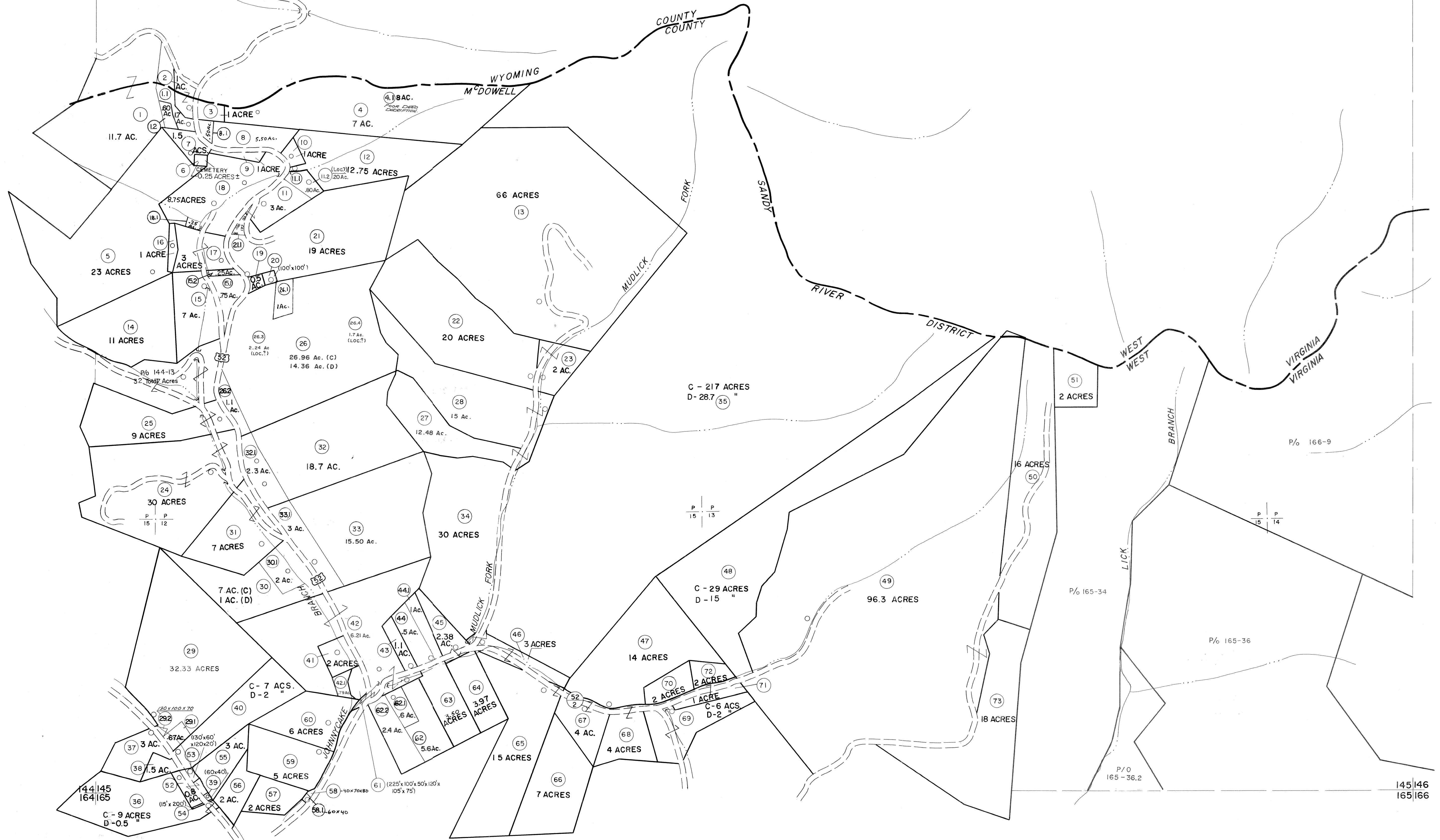


124
144|145

145|146



For Tax Purposes Only

Prepared by
MICHAEL BAKER, JR., INC.
Consulting Engineers
Rochester, Pennsylvania

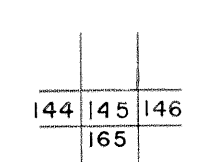
Legend

Property line	—————	Original lot line	-----
Edge of pavement or roadway	=====	Deed lot number	(15)
Corporation line	-----	Parcel or index number	(22)
District line	-----	Improvement	o
County line	-----	Railroad	—+—

Revisions

1	4-15-64	9	8/27/06	S&H	17
2	12-3-74	10	6-18-07	H&S	18
3	Revised to 7-1-88	11			19
4	Revised to 7-1-88	12			20
5	Revised to 7-1-88	13			21
6	O.G.I.S 5-15-95	14			22
7	O.G.I.S 12-1-96	15			23
8	ES1 4/19/01	16			24

KEY MAP



McDOWELL COUNTY
STATE OF WEST VIRGINIA
Office of Assessor

DISTRICT
SANDY RIVER

SHEET NO: 145

Date, Aerial Photography: April, 1961 Date, Map: July, 1962
Photo No: Scale: 1" = 400'