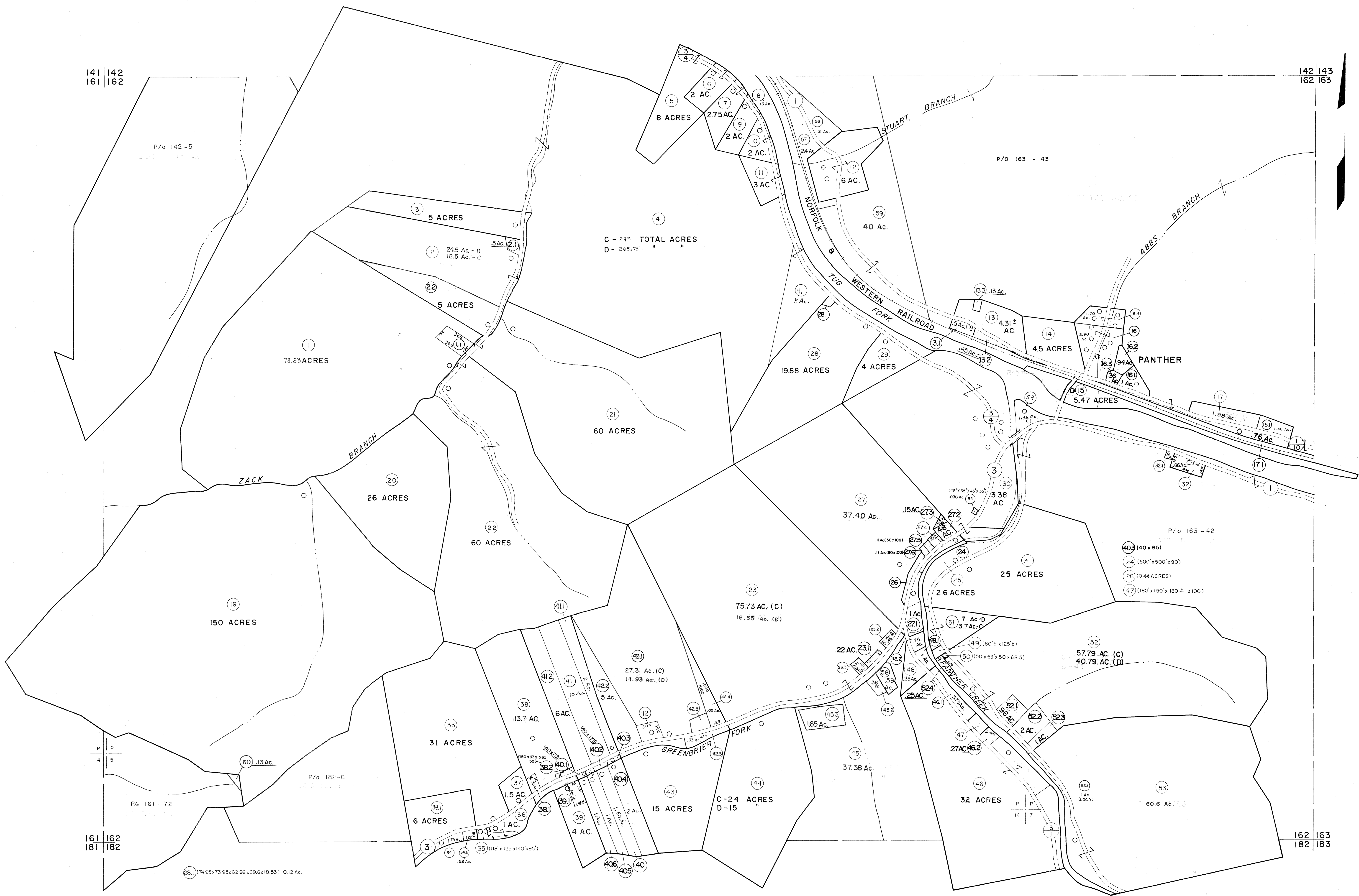


141 | 142  
161 | 162

142 | 143  
162 | 163



161 | 162  
181 | 182

162 | 163  
182 | 183

For Tax Purposes Only

Prepared by  
MICHAEL BAKER, JR., INC.  
Consulting Engineers  
Rochester, Pennsylvania

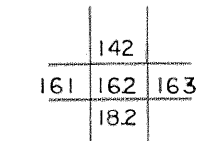
Legend

Property line	—	Original lot line	—
Edge of pavement or roadway	—	Deed lot number	(15)
Corporation line	—	Parcel or index number	(99)
District line	—	Improvement	o
County line	—	Railroad	—

Revisions

1	4-15-64	9	O.G.I.S. 12-1-96	J.E.B.	17
2	12-4-74	10	SLS INC. 6/22/98	DSW	18
3	Revised to 7-1-85	11	ESI 4/24/01	REK	19
4	7-1-84	12	ESI 12/4/02	REK	20
5	July 1985	13	5/24/04	S&H	21
6	Revised to 7-1-88	14	8/27/06	S&H	22
7	Revised to 7-1-89	15			23
8	O.G.I.S. 5-15-95	16			24

KEY MAP



**McDOWELL COUNTY**  
STATE OF WEST VIRGINIA  
Office of Assessor

DISTRICT

**SANDY RIVER**

SHEET NO: 162

Date, Aerial Photography: April, 1961 Date, Map: July, 1962  
Photo No: Scale: 1" = 400'